

Datasheet for ABIN389236
anti-FZD1 antibody (AA 367-396)[Go to Product page](#)

3 Images

Overview

Quantity:	400 µL
Target:	FZD1 (Fzd1)
Binding Specificity:	AA 367-396
Reactivity:	Human
Host:	Rabbit
Clonality:	Polyclonal
Conjugate:	This FZD1 antibody is un-conjugated
Application:	Western Blotting (WB), Flow Cytometry (FACS), Immunohistochemistry (Paraffin-embedded Sections) (IHC (p))

Product Details

Immunogen:	This FZD1 antibody is generated from rabbits immunized with a KLH conjugated synthetic peptide between 367-396 amino acids from the Central region of human FZD1.
Clone:	RB14325
Isotype:	Ig Fraction
Predicted Reactivity:	M, Rat
Purification:	This antibody is prepared by Saturated Ammonium Sulfate (SAS) precipitation followed by dialysis against PBS.

Target Details

Target:	FZD1 (Fzd1)
---------	-------------

Target Details

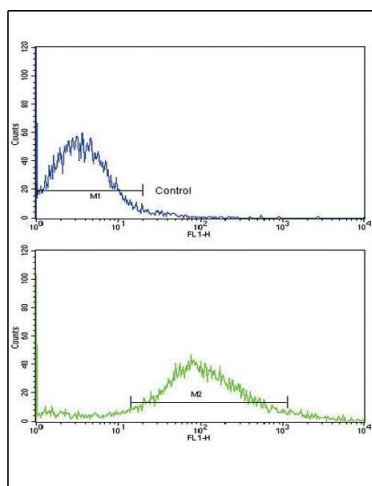
Alternative Name:	FZD1 (Fzd1 Products)
Background:	Members of the 'frizzled' family are 7-transmembrane domain proteins that are receptors for Wnt signaling proteins. The FZD1 protein contains a signal peptide, a cysteine-rich domain in the N-terminal extracellular region, 7 transmembrane domains, and a C-terminal PDZ domain-binding motif.
Molecular Weight:	71158
Gene ID:	8321
NCBI Accession:	NP_003496
UniProt:	Q9UP38
Pathways:	WNT Signaling, Asymmetric Protein Localization

Application Details

Application Notes:	WB: 1:1000. IHC-P: 1:10~50. FC: 1:10~50
Restrictions:	For Research Use only

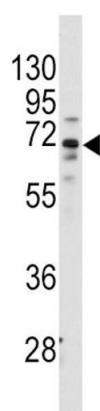
Handling

Format:	Liquid
Buffer:	Purified polyclonal antibody supplied in PBS with 0.09 % (W/V) sodium azide.
Preservative:	Sodium azide
Precaution of Use:	This product contains Sodium azide: a POISONOUS AND HAZARDOUS SUBSTANCE which should be handled by trained staff only.
Handling Advice:	Avoid freeze-thaw cycles.
Storage:	4 °C,-20 °C
Storage Comment:	Maintain refrigerated at 2-8 °C for up to 6 months. For long term storage store at -20 °C in small aliquots.
Expiry Date:	6 months



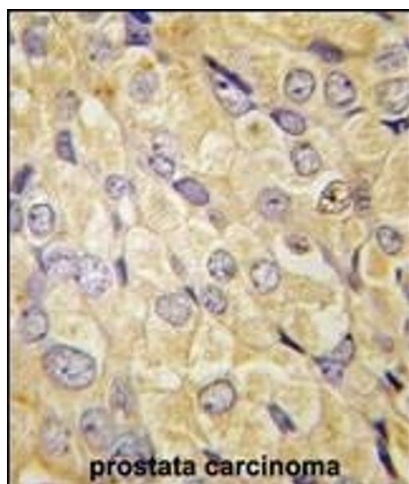
Flow Cytometry

Image 1. Flow cytometric analysis of NCI- cells using FZD1 Antibody (Center)(bottom histogram) compared to a negative control cell (top histogram). FITC-conjugated goat-anti-rabbit secondary antibodies were used for the analysis.



Western Blotting

Image 2. Western blot analysis of anti-FZD1 Antibody (center) (ABIN389236 and ABIN2839386) in Hela cell line lysates (35 µg/lane). FZD1 (arrow) was detected using the purified Pab.



Immunohistochemistry (Paraffin-embedded Sections)

Image 3. Formalin-fixed and paraffin-embedded human prostate carcinoma tissue reacted with FZD1 antibody (Center) (ABIN389236 and ABIN2839386) , which was peroxidase-conjugated to the secondary antibody, followed by DAB staining. This data demonstrates the use of this antibody for immunohistochemistry, clinical relevance has not been evaluated.