

Datasheet for ABIN389270
anti-AASS antibody (AA 264-294)

3 Images

[Go to Product page](#)

Overview

Quantity:	400 µL
Target:	AASS
Binding Specificity:	AA 264-294
Reactivity:	Human, Mouse
Host:	Rabbit
Clonality:	Polyclonal
Conjugate:	This AASS antibody is un-conjugated
Application:	Western Blotting (WB), Immunohistochemistry (Paraffin-embedded Sections) (IHC (p))

Product Details

Immunogen:	This AASS antibody is generated from rabbits immunized with a KLH conjugated synthetic peptide between 264-294 amino acids from the Central region of human AASS.
Clone:	RB14893
Isotype:	Ig Fraction
Purification:	This antibody is prepared by Saturated Ammonium Sulfate (SAS) precipitation followed by dialysis against PBS.

Target Details

Target:	AASS
Alternative Name:	AASS (AASS Products)

Target Details

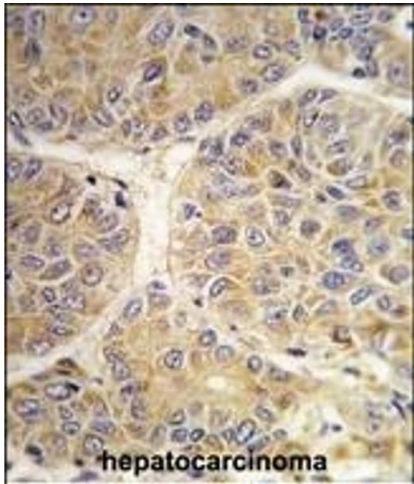
Background:	AASS is a bifunctional enzyme that catalyzes the first two steps in the mammalian lysine degradation pathway. The N-terminal and the C-terminal portions of this enzyme contain lysine-ketoglutarate reductase and saccharopine dehydrogenase activity, respectively, resulting in the conversion of lysine to alpha-aminoadipic semialdehyde. Mutations in the gene encoding this protein are associated with familial hyperlysinemia.
Molecular Weight:	102132
Gene ID:	10157
NCBI Accession:	NP_005754
UniProt:	Q9UDR5
Pathways:	SARS-CoV-2 Protein Interactome

Application Details

Application Notes:	WB: 1:1000. WB: 1:1000. IHC-P: 1:10~50
Restrictions:	For Research Use only

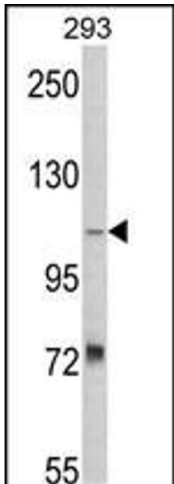
Handling

Format:	Liquid
Buffer:	Purified polyclonal antibody supplied in PBS with 0.09 % (W/V) sodium azide.
Preservative:	Sodium azide
Precaution of Use:	This product contains Sodium azide: a POISONOUS AND HAZARDOUS SUBSTANCE which should be handled by trained staff only.
Storage:	4 °C, -20 °C
Storage Comment:	Maintain refrigerated at 2-8 °C for up to 6 months. For long term storage store at -20 °C in small aliquots to prevent freeze-thaw cycles.
Expiry Date:	6 months



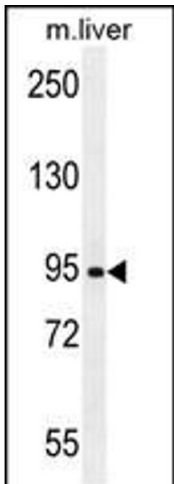
Immunohistochemistry (Paraffin-embedded Sections)

Image 1. Formalin-fixed and paraffin-embedded human hepatocarcinoma tissue reacted with the SS antibody (Center) (ABIN389270 and ABIN2839403) , which was peroxidase-conjugated to the secondary antibody, followed by DAB staining. This data demonstrates the use of this antibody for immunohistochemistry, clinical relevance has not been evaluated.



Western Blotting

Image 2. Western blot analysis of SS Antibody (Center) (ABIN389270 and ABIN2839403) in 293 cell line lysates (35 µg/lane). SS (arrow) was detected using the purified Pab.



Western Blotting

Image 3. SS Antibody (Center) (ABIN389270 and ABIN2839403) western blot analysis in mouse liver tissue lysates (35 µg/lane).This demonstrates the SS antibody detected the SS protein (arrow).