

Datasheet for ABIN389285

anti-MTHFD1 antibody (AA 535-562)[Go to Product page](#)**4** Images

Overview

Quantity:	400 µL
Target:	MTHFD1
Binding Specificity:	AA 535-562
Reactivity:	Human
Host:	Rabbit
Clonality:	Polyclonal
Conjugate:	This MTHFD1 antibody is un-conjugated
Application:	Western Blotting (WB), Immunofluorescence (IF), Immunohistochemistry (Paraffin-embedded Sections) (IHC (p))

Product Details

Immunogen:	This MTHFD1 antibody is generated from rabbits immunized with a KLH conjugated synthetic peptide between 535-562 amino acids from the Central region of human MTHFD1.
Clone:	RB19391
Isotype:	Ig Fraction
Predicted Reactivity:	M, Rat
Purification:	This antibody is prepared by Saturated Ammonium Sulfate (SAS) precipitation followed by dialysis against PBS.

Target Details

Target:	MTHFD1
---------	--------

Target Details

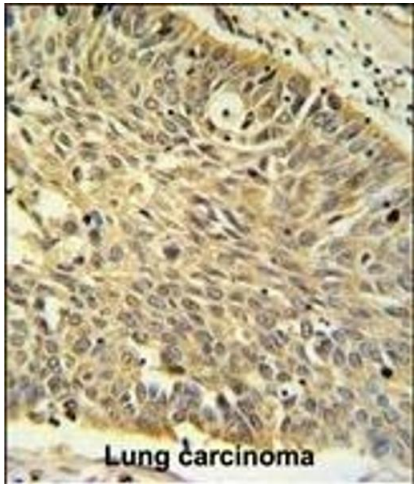
Alternative Name:	MTHFD1 (MTHFD1 Products)
Background:	MTHFD1 is a protein that possesses three distinct enzymatic activities, 5,10-methylenetetrahydrofolate dehydrogenase, 5,10-methenyltetrahydrofolate cyclohydrolase and 10-formyltetrahydrofolate synthetase. Each of these activities catalyzes one of three sequential reactions in the interconversion of 1-carbon derivatives of tetrahydrofolate, which are substrates for methionine, thymidylate, and de novo purine syntheses. The trifunctional enzymatic activities are conferred by two major domains, an aminoterminal portion containing the dehydrogenase and cyclohydrolase activities and a larger synthetase domain.
Molecular Weight:	101559
Gene ID:	4522
NCBI Accession:	NP_005947
UniProt:	P11586
Pathways:	Methionine Biosynthetic Process

Application Details

Application Notes:	IF: 1:10~50. WB: 1:1000. WB: 1:1000. IHC-P: 1:50~100
Restrictions:	For Research Use only

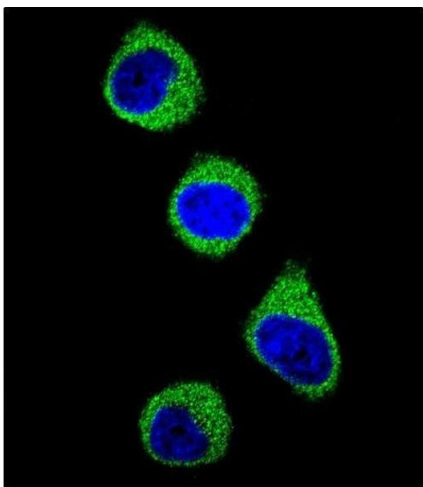
Handling

Format:	Liquid
Buffer:	Purified polyclonal antibody supplied in PBS with 0.09 % (W/V) sodium azide.
Preservative:	Sodium azide
Precaution of Use:	This product contains Sodium azide: a POISONOUS AND HAZARDOUS SUBSTANCE which should be handled by trained staff only.
Storage:	4 °C, -20 °C
Storage Comment:	Maintain refrigerated at 2-8 °C for up to 6 months. For long term storage store at -20 °C in small aliquots to prevent freeze-thaw cycles.
Expiry Date:	6 months



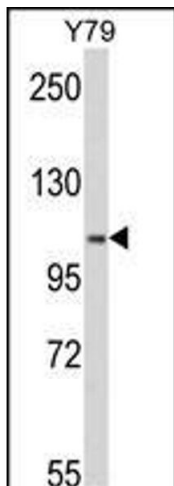
Immunohistochemistry (Paraffin-embedded Sections)

Image 1. MTHFD1 Antibody (Center) f IHC analysis in formalin fixed and paraffin embedded human Lung carcinoma followed by peroxidase conjugation of the secondary antibody and DAB staining. This data demonstrates the use of the MTHFD1 Antibody (Center) for immunohistochemistry. Clinical relevance has not been evaluated.



Immunofluorescence

Image 2. Confocal immunofluorescent analysis of MTHFD1 Antibody (Center) f with 293 cell followed by Alexa Fluor 488-conjugated goat anti-rabbit IgG (green). DI was used to stain the cell nuclear (blue).



Western Blotting

Image 3. Western blot analysis of MTHFD1 Antibody (Center) f in Y79 cell line lysates (35 µg/lane). MTHFD1 (arrow) was detected using the purified Pab.

Please check the [product details page](#) for more images. Overall 4 images are available for ABIN389285.