

Datasheet for ABIN389297
anti-RFC2 antibody (N-Term)

3 Images

[Go to Product page](#)

Overview

Quantity:	400 µL
Target:	RFC2
Binding Specificity:	AA 17-46, N-Term
Reactivity:	Human
Host:	Rabbit
Clonality:	Polyclonal
Conjugate:	This RFC2 antibody is un-conjugated
Application:	Western Blotting (WB), Flow Cytometry (FACS), Immunohistochemistry (Paraffin-embedded Sections) (IHC (p))

Product Details

Immunogen:	This RFC2 antibody is generated from rabbits immunized with a KLH conjugated synthetic peptide between 17-46 amino acids from the N-terminal region of human RFC2.
Clone:	RB17303
Isotype:	Ig Fraction
Predicted Reactivity:	B, Rat
Purification:	This antibody is prepared by Saturated Ammonium Sulfate (SAS) precipitation followed by dialysis against PBS.

Target Details

Target:	RFC2
---------	------

Target Details

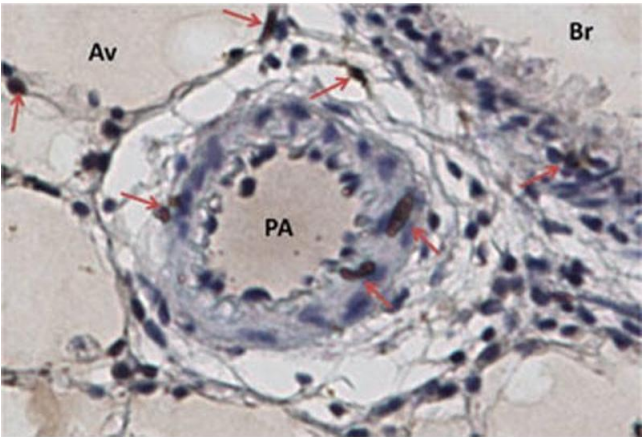
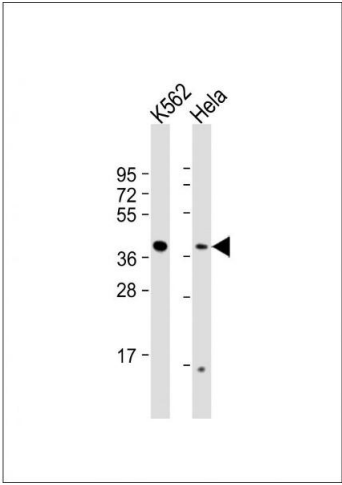
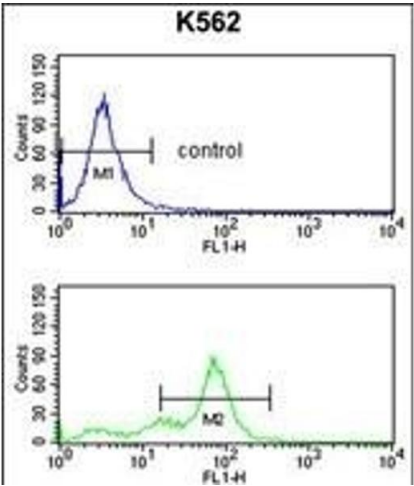
Alternative Name:	RFC2 (RFC2 Products)
Background:	The elongation of primed DNA templates by DNA polymerase delta and epsilon requires the action of the accessory proteins, proliferating cell nuclear antigen (PCNA) and replication factor C (RFC). RFC, also called activator 1, is a protein complex consisting of five distinct subunits of 145, 40, 38, 37, and 36.5 kD. RFC2 is the 40 kD subunit, which has been shown to be responsible for binding ATP. Deletion of RFC2 gene has been associated with Williams syndrome.
Molecular Weight:	39157
Gene ID:	5982
NCBI Accession:	NP_001265720 , NP_001265721 , NP_001265722 , NP_002905 , NP_852136
UniProt:	P35250
Pathways:	Telomere Maintenance , DNA Damage Repair , DNA Replication , Synthesis of DNA

Application Details

Application Notes:	WB: 1:1000. IHC-P: 1:50~100. FC: 1:10~50
Restrictions:	For Research Use only

Handling

Format:	Liquid
Buffer:	Purified polyclonal antibody supplied in PBS with 0.09 % (W/V) sodium azide.
Preservative:	Sodium azide
Precaution of Use:	This product contains Sodium azide: a POISONOUS AND HAZARDOUS SUBSTANCE which should be handled by trained staff only.
Storage:	4 °C,-20 °C
Storage Comment:	Maintain refrigerated at 2-8 °C for up to 6 months. For long term storage store at -20 °C in small aliquots to prevent freeze-thaw cycles.
Expiry Date:	6 months



Flow Cytometry

Image 1. RFC2 Antibody (N-term) (ABIN389297 and ABIN2839417) flow cytometry analysis of K562 cells (bottom histogram) compared to a negative control cell (top histogram). FITC-conjugated goat-anti-rabbit secondary antibodies were used for the analysis.

Western Blotting

Image 2. All lanes : Anti-RFC2 Antibody (N-term) at 1:1000 dilution Lane 1: K562 whole cell lysate Lane 2: HeLa whole cell lysate Lysates/proteins at 20 µg per lane. Secondary Goat Anti-Rabbit IgG, (H+L), Peroxidase conjugated at 1/10000 dilution. Predicted band size : 39 kDa Blocking/Dilution buffer: 5 % NFDm/TBST.

Immunohistochemistry (Paraffin-embedded Sections)

Image 3. Rat lung, taken with 40x objective. Immunohistochemistry with RFC2 Antibody (N-term) (ABIN389297 and ABIN2839417) , 1:200 dilution, counter stained with Hematoxylin. Positive cells identified with arrows. Av-Alveoli, Br-Bronchus, Pa-Pulmonary Artery. (Provided by Hirotaka Ata, University of South Alabama, Dept of Biochem and Mol Biol)