



[Go to Product page](#)

Datasheet for ABIN389300

anti-PPAP2C antibody (C-Term)

2 Images

Overview

Quantity:	400 µL
Target:	PPAP2C
Binding Specificity:	AA 227-254, C-Term
Reactivity:	Human
Host:	Rabbit
Clonality:	Polyclonal
Conjugate:	This PPAP2C antibody is un-conjugated
Application:	Western Blotting (WB), Flow Cytometry (FACS)

Product Details

Immunogen:	This PPAP2C antibody is generated from rabbits immunized with a KLH conjugated synthetic peptide between 227-254 amino acids from the C-terminal region of human PPAP2C.
Clone:	RB17209
Isotype:	Ig Fraction
Predicted Reactivity:	B
Purification:	This antibody is prepared by Saturated Ammonium Sulfate (SAS) precipitation followed by dialysis against PBS.

Target Details

Target:	PPAP2C
---------	--------

Target Details

Alternative Name: PPAP2C ([PPAP2C Products](#))

Background: PPAP2C is a member of the phosphatidic acid phosphatase (PAP) family. PAPs convert phosphatidic acid to diacylglycerol, and function in de novo synthesis of glycerolipids as well as in receptor-activated signal transduction mediated by phospholipase D. This protein is similar to phosphatidic acid phosphatase type 2A (PPAP2A) and type 2B (PPAP2B). All three proteins contain 6 transmembrane regions, and a consensus N-glycosylation site. This protein has been shown to possess membrane associated PAP activity.

Molecular Weight: 32574

Gene ID: 8612

NCBI Accession: [NP_003703](#), [NP_803545](#), [NP_808211](#)

UniProt: [O43688](#)

Application Details

Application Notes: WB: 1:1000. FC: 1:10~50

Restrictions: For Research Use only

Handling

Format: Liquid

Buffer: Purified polyclonal antibody supplied in PBS with 0.09 % (W/V) sodium azide.

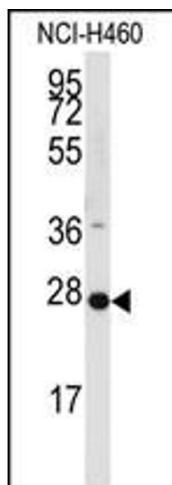
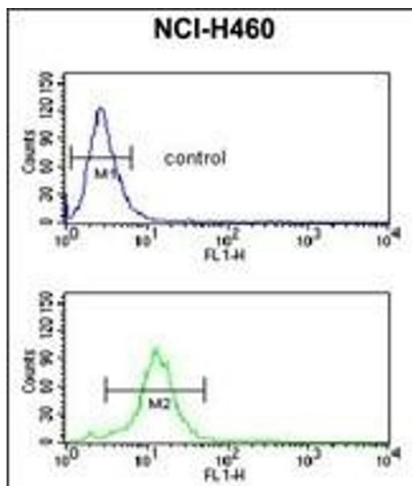
Preservative: Sodium azide

Precaution of Use: This product contains Sodium azide: a POISONOUS AND HAZARDOUS SUBSTANCE which should be handled by trained staff only.

Storage: 4 °C,-20 °C

Storage Comment: Maintain refrigerated at 2-8 °C for up to 6 months. For long term storage store at -20 °C in small aliquots to prevent freeze-thaw cycles.

Expiry Date: 6 months



Flow Cytometry

Image 1. C Antibody (C-term) 799b flow cytometric analysis of NCI- cells (bottom histogram) compared to a negative control cell (top histogram). FITC-conjugated goat-anti-rabbit secondary antibodies were used for the analysis.

Western Blotting

Image 2. Western blot analysis of anti-C Antibody (C-term) 799b in NCI- cell line lysates (35 µg/lane). C (arrow) was detected using the purified Pab.