

Datasheet for ABIN389305
anti-U2AF1 antibody (AA 99-125)[Go to Product page](#)

4 Images

Overview

Quantity:	400 µL
Target:	U2AF1
Binding Specificity:	AA 99-125
Reactivity:	Human
Host:	Rabbit
Clonality:	Polyclonal
Conjugate:	This U2AF1 antibody is un-conjugated
Application:	Western Blotting (WB), Immunohistochemistry (Paraffin-embedded Sections) (IHC (p)), Flow Cytometry (FACS)

Product Details

Immunogen:	This U2AF1 antibody is generated from rabbits immunized with a KLH conjugated synthetic peptide between 99-125 amino acids from the Central region of human U2AF1.
Clone:	RB17372
Isotype:	Ig Fraction
Predicted Reactivity:	B, M
Purification:	This antibody is prepared by Saturated Ammonium Sulfate (SAS) precipitation followed by dialysis against PBS.

Target Details

Target:	U2AF1
---------	-------

Target Details

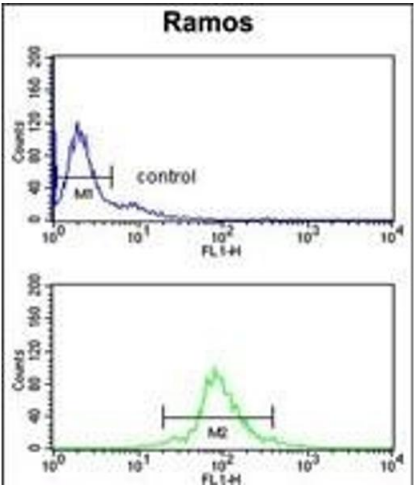
Alternative Name:	U2AF1 (U2AF1 Products)
Background:	U2AF1 belongs to the splicing factor SR family. U2 auxiliary factor, comprising a large and a small subunit, is a non-snRNP protein required for the binding of U2 snRNP to the pre-mRNA branch site. This gene encodes the small subunit which plays a critical role in both constitutive and enhancer-dependent RNA splicing by directly mediating interactions between the large subunit and proteins bound to the enhancers.
Molecular Weight:	27872
Gene ID:	7307
NCBI Accession:	NP_001020374 , NP_001020375 , NP_006749
UniProt:	Q01081

Application Details

Application Notes:	WB: 1:1000. WB: 1:1000. IHC-P: 1:50~100. FC: 1:10~50
Restrictions:	For Research Use only

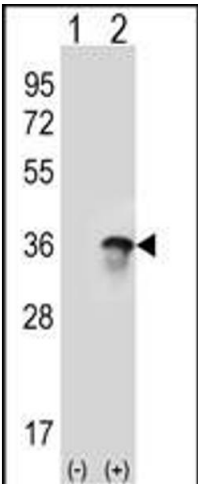
Handling

Format:	Liquid
Buffer:	Purified polyclonal antibody supplied in PBS with 0.09 % (W/V) sodium azide.
Preservative:	Sodium azide
Precaution of Use:	This product contains Sodium azide: a POISONOUS AND HAZARDOUS SUBSTANCE which should be handled by trained staff only.
Storage:	4 °C, -20 °C
Storage Comment:	Maintain refrigerated at 2-8 °C for up to 6 months. For long term storage store at -20 °C in small aliquots to prevent freeze-thaw cycles.
Expiry Date:	6 months



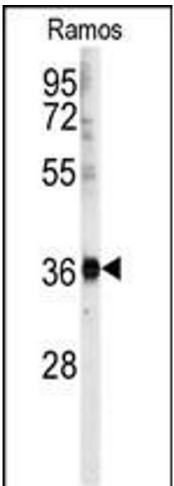
Flow Cytometry

Image 1. U2AF1 Antibody (Center) (ABIN389305 and ABIN2839425) flow cytometry analysis of Ramos cells (bottom histogram) compared to a negative control cell (top histogram). FITC-conjugated goat-anti-rabbit secondary antibodies were used for the analysis.



Western Blotting

Image 2. Western blot analysis of U2AF1 (arrow) using rabbit polyclonal U2AF1 Antibody (Center) (ABIN389305 and ABIN2839425). 293 cell lysates (2 µg/lane) either nontransfected (Lane 1) or transiently transfected (Lane 2) with the U2AF1 gene.



Western Blotting

Image 3. Western blot analysis of anti-U2AF1 Antibody (Center) (ABIN389305 and ABIN2839425) in Ramos cell line lysates (35 µg/lane). U2AF1 (arrow) was detected using the purified Pab.

Please check the [product details page](#) for more images. Overall 4 images are available for ABIN389305.