

Datasheet for ABIN389337
anti-IRF8 antibody (AA 241-269)[Go to Product page](#)

2 Images

Overview

Quantity:	400 µL
Target:	IRF8
Binding Specificity:	AA 241-269
Reactivity:	Human
Host:	Rabbit
Clonality:	Polyclonal
Conjugate:	This IRF8 antibody is un-conjugated
Application:	Western Blotting (WB), Flow Cytometry (FACS)

Product Details

Immunogen:	This IRF8 antibody is generated from rabbits immunized with a KLH conjugated synthetic peptide between 241-269 amino acids from the Central region of human IRF8.
Clone:	RB17423
Isotype:	Ig Fraction
Purification:	This antibody is prepared by Saturated Ammonium Sulfate (SAS) precipitation followed by dialysis against PBS.

Target Details

Target:	IRF8
Alternative Name:	IRF8 (IRF8 Products)

Target Details

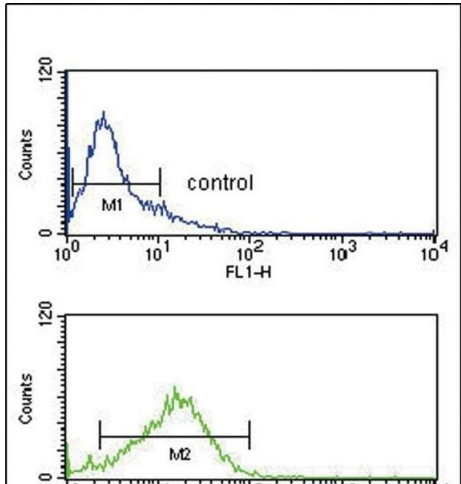
Background:	Interferon consensus sequence-binding protein (ICSBP) is a transcription factor of the interferon (IFN) regulatory factor (IRF) family. Proteins of this family are composed of a conserved DNA-binding domain in the N-terminal region and a divergent C-terminal region that serves as the regulatory domain. The IRF family proteins bind to the IFN-stimulated response element (ISRE) and regulate expression of genes stimulated by type I IFNs, namely IFN-alpha and IFN-beta. IRF family proteins also control expression of IFN-alpha and IFN-beta-regulated genes that are induced by viral infection.
Molecular Weight:	48356
Gene ID:	3394
NCBI Accession:	NP_002154
UniProt:	Q02556
Pathways:	Cellular Response to Molecule of Bacterial Origin

Application Details

Application Notes:	WB: 1:1000. FC: 1:10~50
Restrictions:	For Research Use only

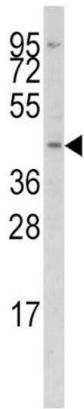
Handling

Format:	Liquid
Buffer:	Purified polyclonal antibody supplied in PBS with 0.09 % (W/V) sodium azide.
Preservative:	Sodium azide
Precaution of Use:	This product contains Sodium azide: a POISONOUS AND HAZARDOUS SUBSTANCE which should be handled by trained staff only.
Storage:	4 °C,-20 °C
Storage Comment:	Maintain refrigerated at 2-8 °C for up to 6 months. For long term storage store at -20 °C in small aliquots to prevent freeze-thaw cycles.
Expiry Date:	6 months



Flow Cytometry

Image 1. IRF8 Antibody (Center) (ABIN389337 and ABIN2839449) flow cytometry analysis of Jurkat cells (bottom histogram) compared to a negative control cell (top histogram). FITC-conjugated goat-anti-rabbit secondary antibodies were used for the analysis.



Western Blotting

Image 2. Western blot analysis of anti-IRF8 Antibody (Center) (ABIN389337 and ABIN2839449) in Jurkat cell line lysates (35 µg/lane). IRF8 (arrow) was detected using the purified Pab.