

Datasheet for ABIN389342
anti-NPM1 antibody (N-Term)[Go to Product page](#)

4 Images

Overview

Quantity:	400 µL
Target:	NPM1
Binding Specificity:	AA 7-33, N-Term
Reactivity:	Human
Host:	Rabbit
Clonality:	Polyclonal
Conjugate:	This NPM1 antibody is un-conjugated
Application:	Western Blotting (WB), Immunofluorescence (IF), Immunohistochemistry (Paraffin-embedded Sections) (IHC (p)), Flow Cytometry (FACS)

Product Details

Immunogen:	This NPM1 antibody is generated from rabbits immunized with a KLH conjugated synthetic peptide between 7-33 amino acids from the N-terminal region of human NPM1.
Clone:	RB17469
Isotype:	Ig Fraction
Predicted Reactivity:	M, Rat
Purification:	This antibody is prepared by Saturated Ammonium Sulfate (SAS) precipitation followed by dialysis against PBS.

Target Details

Target:	NPM1
---------	------

Target Details

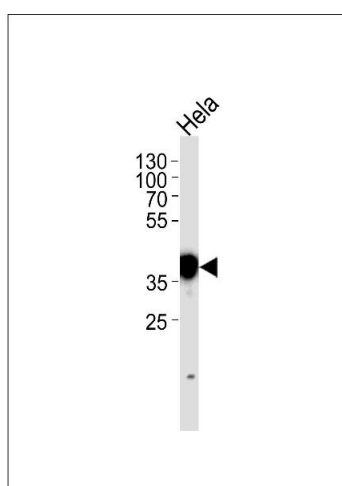
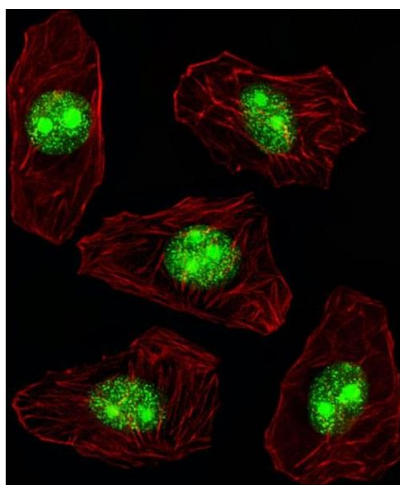
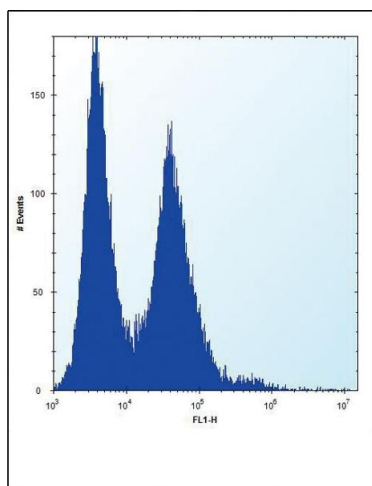
Alternative Name:	NPM1 (NPM1 Products)
Background:	<p>NPM1 is a ubiquitously expressed nucleolar protein that shuttles between the nucleus and cytoplasm. It is implicated in multiple functions, including ribosomal protein assembly and transport, control of centrosome duplication, and regulation of the tumor suppressor ARF.</p> <p>NPM1 mutations that relocalize NPM1 from the nucleus into the cytoplasm are associated with development of acute myeloid leukemia.</p>
Molecular Weight:	32575
Gene ID:	4869
NCBI Accession:	NP_001032827 , NP_002511 , NP_954654
UniProt:	P06748
Pathways:	Ribonucleoprotein Complex Subunit Organization , Ribosome Assembly

Application Details

Application Notes:	IF: 1:10~50. WB: 1:1000. IHC-P: 1:10~50. FC: 1:10~50
Restrictions:	For Research Use only

Handling

Format:	Liquid
Buffer:	Purified polyclonal antibody supplied in PBS with 0.09 % (W/V) sodium azide.
Preservative:	Sodium azide
Precaution of Use:	This product contains Sodium azide: a POISONOUS AND HAZARDOUS SUBSTANCE which should be handled by trained staff only.
Storage:	4 °C,-20 °C
Storage Comment:	Maintain refrigerated at 2-8 °C for up to 6 months. For long term storage store at -20 °C in small aliquots to prevent freeze-thaw cycles.
Expiry Date:	6 months



Flow Cytometry

Image 1. N Antibody (N-term) (ABIN389342 and ABIN2839451) flow cytometric analysis of Hela cells (right histogram) compared to a negative control cell (left histogram). FITC-conjugated donkey-anti-rabbit secondary antibodies were used for the analysis.

Immunofluorescence

Image 2. Fluorescent image of A549 cell stained with N Antibody (N-term) (ABIN389342 and ABIN2839451)/SH090227B. A549 cells were fixed with 4 % PFA (20 min), permeabilized with Triton X-100 (0.1 %, 10 min), then incubated with N primary antibody (1:25, 1 h at 37 °C). For secondary antibody, Alexa Fluor® 488 conjugated donkey anti-rabbit antibody (green) was used (1:400, 50 min at 37 °C). Cytoplasmic actin was counterstained with Alexa Fluor® 555 (red) conjugated Phalloidin (7 units/mL, 1 h at 37 °C). N immunoreactivity is localized to Nucleus and Nucleolus significantly.

Western Blotting

Image 3. N Antibody (N-term) (ABIN389342 and ABIN2839451) western blot analysis in Hela cell line lysates (35 µg/lane). This demonstrates the N antibody detected the N protein (arrow).

Please check the [product details page](#) for more images. Overall 4 images are available for ABIN389342.