

Datasheet for ABIN389351  
**anti-POLR1C antibody (C-Term)**[Go to Product page](#)

## 2 Images

## Overview

Quantity:	400 µL
Target:	POLR1C
Binding Specificity:	AA 319-346, C-Term
Reactivity:	Human, Mouse
Host:	Rabbit
Clonality:	Polyclonal
Conjugate:	This POLR1C antibody is un-conjugated
Application:	Western Blotting (WB), Immunohistochemistry (Paraffin-embedded Sections) (IHC (p))

## Product Details

Immunogen:	This POLR1C antibody is generated from rabbits immunized with a KLH conjugated synthetic peptide between 319-346 amino acids from the C-terminal region of human POLR1C.
Clone:	RB17524
Isotype:	Ig Fraction
Purification:	This antibody is prepared by Saturated Ammonium Sulfate (SAS) precipitation followed by dialysis against PBS.

## Target Details

Target:	POLR1C
Alternative Name:	POLR1C ( <a href="#">POLR1C Products</a> )

## Target Details

**Background:** DNA-dependent RNA polymerase catalyzes the transcription of DNA into RNA using the four ribonucleoside triphosphates as substrates. Common component of RNA polymerases I and III which synthesize ribosomal RNA precursors and small RNAs, such as 5S rRNA and tRNAs, respectively. RPAC1 is part of the Pol core element with the central large cleft and probably a clamp element that moves to open and close the cleft.

**Molecular Weight:** 39250

**Gene ID:** 9533

**NCBI Accession:** [NP\\_976035](#)

**UniProt:** [O15160](#)

## Application Details

**Application Notes:** WB: 1:2000. IHC-P: 1:10~50

**Restrictions:** For Research Use only

## Handling

**Format:** Liquid

**Buffer:** Purified polyclonal antibody supplied in PBS with 0.09 % (W/V) sodium azide.

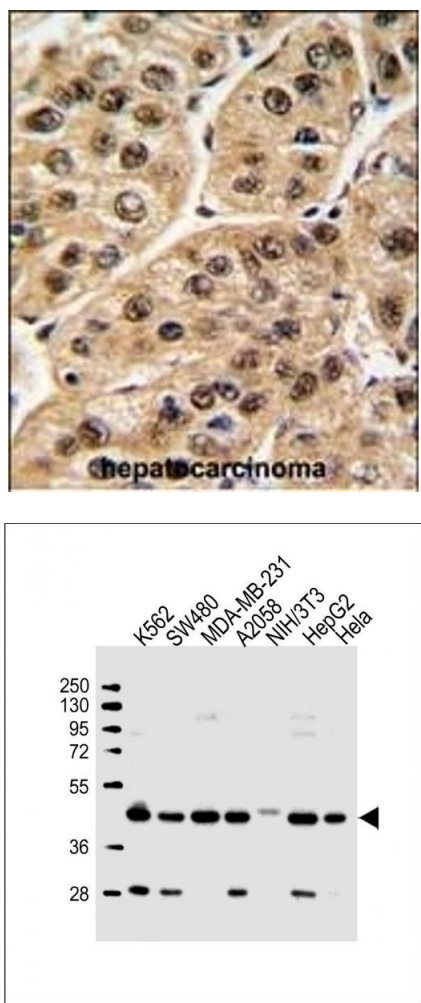
**Preservative:** Sodium azide

**Precaution of Use:** This product contains Sodium azide: a POISONOUS AND HAZARDOUS SUBSTANCE which should be handled by trained staff only.

**Storage:** 4 °C,-20 °C

**Storage Comment:** Maintain refrigerated at 2-8 °C for up to 6 months. For long term storage store at -20 °C in small aliquots to prevent freeze-thaw cycles.

**Expiry Date:** 6 months



Immunohistochemistry (Paraffin-embedded Sections)

**Image 1.** Formalin-fixed and paraffin-embedded human hepatocarcinoma tissue reacted with POLR1C antibody (C-term) (ABIN389351 and ABIN2839457) , which was peroxidase-conjugated to the secondary antibody, followed by DAB staining. This data demonstrates the use of this antibody for immunohistochemistry, clinical relevance has not been evaluated.

Western Blotting

**Image 2.** All lanes : Anti-POLR1C Antibody (C-term) at 1:2000 dilution Lane 1: K562 whole cell lysate Lane 2: S whole cell lysate Lane 3: MDA-MB-231 whole cell lysate Lane 4: whole cell lysate Lane 5: NIH/3T3 whole cell lysate Lane 6: HepG2 whole cell lysate Lane 7: Hela whole cell lysate Lysates/proteins at 20 µg per lane. Secondary Goat Anti-Rabbit IgG, (H+L), Peroxidase conjugated at 1/10000 dilution. Predicted band size : 39 kDa Blocking/Dilution buffer: 5 % NFDM/TBST.