

Datasheet for ABIN389354  
**anti-SNRPC antibody (C-Term)**

## 3 Images

[Go to Product page](#)

## Overview

Quantity:	400 µL
Target:	SNRPC
Binding Specificity:	AA 133-159, C-Term
Reactivity:	Human
Host:	Rabbit
Clonality:	Polyclonal
Conjugate:	This SNRPC antibody is un-conjugated
Application:	Western Blotting (WB), Flow Cytometry (FACS), Immunohistochemistry (Paraffin-embedded Sections) (IHC (p))

## Product Details

Immunogen:	This SNRPC antibody is generated from rabbits immunized with a KLH conjugated synthetic peptide between 133-159 amino acids from the C-terminal region of human SNRPC.
Clone:	RB17340
Isotype:	Ig Fraction
Predicted Reactivity:	B, C, M, Rat
Purification:	This antibody is prepared by Saturated Ammonium Sulfate (SAS) precipitation followed by dialysis against PBS.

## Target Details

Target:	SNRPC
---------	-------

## Target Details

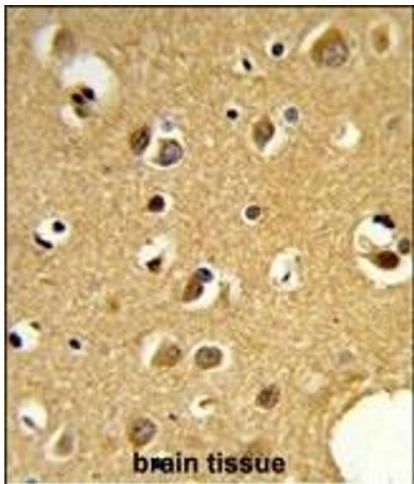
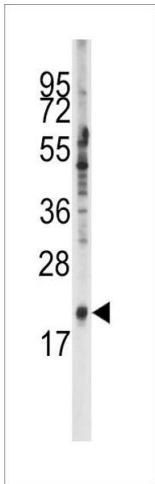
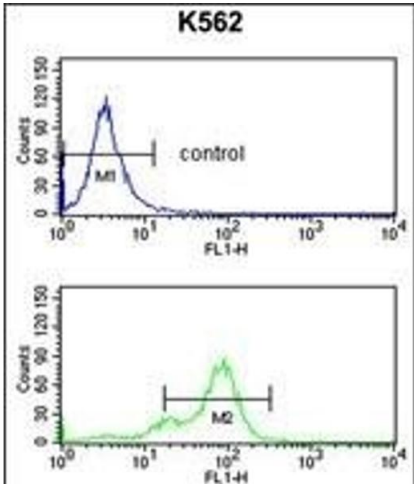
Alternative Name:	SNRPC ( <a href="#">SNRPC Products</a> )
Background:	SNRPC is associated with snRNP U1.
Molecular Weight:	17394
Gene ID:	6631
NCBI Accession:	<a href="#">NP_003084</a>
UniProt:	<a href="#">P09234</a>
Pathways:	<a href="#">Ribonucleoprotein Complex Subunit Organization</a>

## Application Details

Application Notes:	WB: 1:1000. IHC-P: 1:50~100. FC: 1:10~50
Restrictions:	For Research Use only

## Handling

Format:	Liquid
Buffer:	Purified polyclonal antibody supplied in PBS with 0.09 % (W/V) sodium azide.
Preservative:	Sodium azide
Precaution of Use:	This product contains Sodium azide: a POISONOUS AND HAZARDOUS SUBSTANCE which should be handled by trained staff only.
Storage:	4 °C, -20 °C
Storage Comment:	Maintain refrigerated at 2-8 °C for up to 6 months. For long term storage store at -20 °C in small aliquots to prevent freeze-thaw cycles.
Expiry Date:	6 months



### Flow Cytometry

**Image 1.** SNRPC Antibody (C-term) (ABIN389354 and ABIN2839460) flow cytometry analysis of K562 cells (bottom histogram) compared to a negative control cell (top histogram). FITC-conjugated goat-anti-rabbit secondary antibodies were used for the analysis.

### Western Blotting

**Image 2.** Western blot analysis of anti-SNRPC Antibody (C-term) (ABIN389354 and ABIN2839460) in K562 cell line lysates (35 µg/lane). SNRPC (arrow) was detected using the purified Pab.

### Immunohistochemistry (Paraffin-embedded Sections)

**Image 3.** Formalin-fixed and paraffin-embedded human brain tissue reacted with SNRPC Antibody (C-term) (ABIN389354 and ABIN2839460), which was peroxidase-conjugated to the secondary antibody, followed by DAB staining. This data demonstrates the use of this antibody for immunohistochemistry, clinical relevance has not been evaluated.