



[Go to Product page](#)

Datasheet for ABIN389363  
**anti-PA2G4 antibody (AA 228-255)**

3 Images

### Overview

Quantity:	400 µL
Target:	PA2G4
Binding Specificity:	AA 228-255
Reactivity:	Human
Host:	Rabbit
Clonality:	Polyclonal
Conjugate:	This PA2G4 antibody is un-conjugated
Application:	Western Blotting (WB), Immunohistochemistry (Paraffin-embedded Sections) (IHC (p)), Flow Cytometry (FACS)

### Product Details

Immunogen:	This EBP1 antibody is generated from rabbits immunized with a KLH conjugated synthetic peptide between 228-255 amino acids from the Central region of human EBP1.
Clone:	RB19219
Isotype:	Ig Fraction
Predicted Reactivity:	M, Rat
Purification:	This antibody is purified through a protein A column, followed by peptide affinity purification.

### Target Details

Target:	PA2G4
---------	-------

## Target Details

---

Alternative Name: EBP1 ([PA2G4 Products](#))

Background: PA2G4 is an RNA-binding protein that is involved in growth regulation. This protein is present in pre-ribosomal ribonucleoprotein complexes and may be involved in ribosome assembly and the regulation of intermediate and late steps of rRNA processing. This protein can interact with the cytoplasmic domain of the ErbB3 receptor and may contribute to transducing growth regulatory signals. This protein is also a transcriptional co-repressor of androgen receptor-regulated genes and other cell cycle regulatory genes through its interactions with histone deacetylases. This protein has been implicated in growth inhibition and the induction of differentiation of human cancer cells.

Molecular Weight: 43787

Gene ID: 5036

NCBI Accession: [NP\\_006182](#)

UniProt: [Q9UQ80](#)

Pathways: [Myometrial Relaxation and Contraction](#), [Regulation of Carbohydrate Metabolic Process](#), [Hepatitis C](#), [Toll-Like Receptors Cascades](#)

## Application Details

---

Application Notes: WB: 1:1000. IHC-P: 1:50~100. FC: 1:10~50

Restrictions: For Research Use only

## Handling

---

Format: Liquid

Buffer: Purified polyclonal antibody supplied in PBS with 0.09 % (W/V) sodium azide.

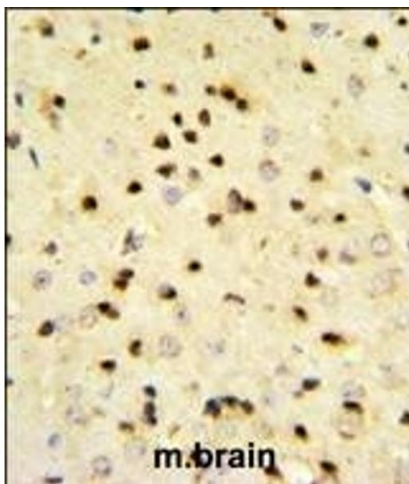
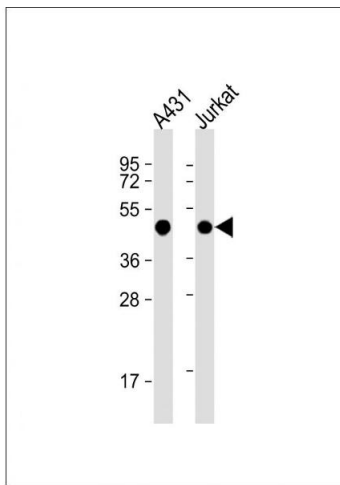
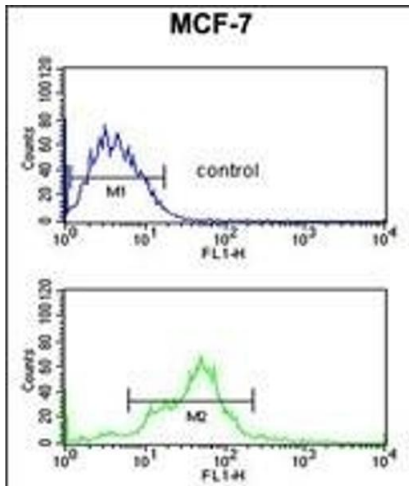
Preservative: Sodium azide

Precaution of Use: This product contains Sodium azide: a POISONOUS AND HAZARDOUS SUBSTANCE which should be handled by trained staff only.

Storage: 4 °C,-20 °C

Storage Comment: Maintain refrigerated at 2-8 °C for up to 6 months. For long term storage store at -20 °C in small aliquots to prevent freeze-thaw cycles.

Expiry Date: 6 months



### Flow Cytometry

**Image 1.** EBP1 Antibody (Center) (ABIN389363 and ABIN2839466) flow cytometric analysis of MCF-7 cells (bottom histogram) compared to a negative control cell (top histogram). FITC-conjugated goat-anti-rabbit secondary antibodies were used for the analysis.

### Western Blotting

**Image 2.** All lanes : Anti-EBP1 Antibody (Center) at 1:1000 dilution Lane 1: A431 whole cell lysate Lane 2: Jurkat whole cell lysate Lysates/proteins at 20 µg per lane. Secondary Goat Anti-Rabbit IgG, (H+L), Peroxidase conjugated at 1/10000 dilution. Predicted band size : 44 kDa Blocking/Dilution buffer: 5 % NFDN/TBST.

### Immunohistochemistry (Paraffin-embedded Sections)

**Image 3.** EBP1 Antibody (Center) (ABIN389363 and ABIN2839466) IHC analysis in formalin fixed and paraffin embedded mouse brain tissue followed by peroxidase conjugation of the secondary antibody and DAB staining. This data demonstrates the use of the EBP1 Antibody (Center) for immunohistochemistry. Clinical relevance has not been evaluated.