

Datasheet for ABIN389367
anti-APEX1 antibody (N-Term)[Go to Product page](#)

3 Images

Overview

Quantity:	400 µL
Target:	APEX1
Binding Specificity:	AA 30-64, N-Term
Reactivity:	Human
Host:	Rabbit
Clonality:	Polyclonal
Conjugate:	This APEX1 antibody is un-conjugated
Application:	Western Blotting (WB), Immunofluorescence (IF)

Product Details

Immunogen:	This APEX1 antibody is generated from rabbits immunized with a KLH conjugated synthetic peptide between 30-64 amino acids from the N-terminal region of human APEX1.
Clone:	RB17544
Isotype:	Ig Fraction
Purification:	This antibody is prepared by Saturated Ammonium Sulfate (SAS) precipitation followed by dialysis against PBS.

Target Details

Target:	APEX1
Alternative Name:	APEX1 (APEX1 Products)

Target Details

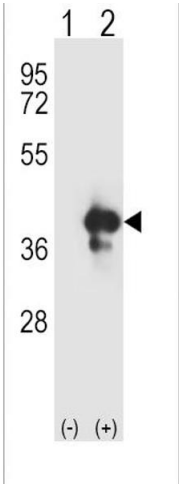
Background:	Apurinic/apyrimidinic (AP) sites occur frequently in DNA molecules by spontaneous hydrolysis, by DNA damaging agents or by DNA glycosylases that remove specific abnormal bases. AP sites are pre-mutagenic lesions that can prevent normal DNA replication so the cell contains systems to identify and repair such sites. Class II AP endonucleases cleave the phosphodiester backbone 5' to the AP site. This protein is the major AP endonuclease in human cells.
Molecular Weight:	35555
Gene ID:	328
NCBI Accession:	NP_001231178 , NP_001632 , NP_542379 , NP_542380
UniProt:	P27695
Pathways:	DNA Damage Repair , Chromatin Binding , Cell RedoxHomeostasis , Smooth Muscle Cell Migration , Positive Regulation of Response to DNA Damage Stimulus

Application Details

Application Notes:	IF: 1:10~50. WB: 1:1000. WB: 1:1000
Restrictions:	For Research Use only

Handling

Format:	Liquid
Buffer:	Purified polyclonal antibody supplied in PBS with 0.09 % (W/V) sodium azide.
Preservative:	Sodium azide
Precaution of Use:	This product contains Sodium azide: a POISONOUS AND HAZARDOUS SUBSTANCE which should be handled by trained staff only.
Storage:	4 °C,-20 °C
Storage Comment:	Maintain refrigerated at 2-8 °C for up to 6 months. For long term storage store at -20 °C in small aliquots to prevent freeze-thaw cycles.
Expiry Date:	6 months



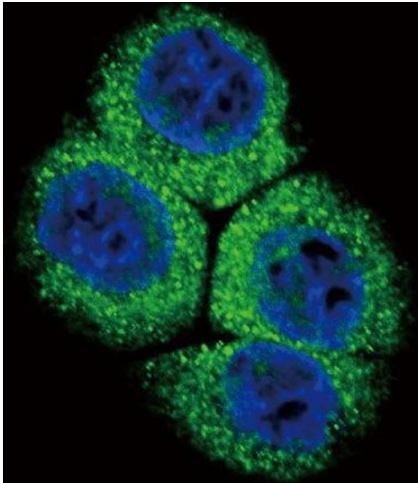
Western Blotting

Image 1. Western blot analysis of EX1 (arrow) using rabbit polyclonal EX1 Antibody (N-term) 2849a. 293 cell lysates (2 µg/lane) either nontransfected (Lane 1) or transiently transfected (Lane 2) with the EX1 gene.



Western Blotting

Image 2. Western blot analysis of anti-EX1 Antibody (N-term) 2849a in HeLa cell line lysates (35 µg/lane). EX1 (arrow) was detected using the purified Pab.



Immunofluorescence

Image 3. Confocal immunofluorescent analysis of EX1 Antibody (N-term) 2849a with HeLa cell followed by Alexa Fluor 488-conjugated goat anti-rabbit IgG (green). DAPI was used to stain the cell nuclear (blue).