



[Go to Product page](#)

Datasheet for ABIN389374

anti-ENPP2 antibody (AA 401-430)

4 Images

Overview

| | |
|----------------------|---|
| Quantity: | 400 µL |
| Target: | ENPP2 |
| Binding Specificity: | AA 401-430 |
| Reactivity: | Human |
| Host: | Rabbit |
| Clonality: | Polyclonal |
| Conjugate: | This ENPP2 antibody is un-conjugated |
| Application: | Western Blotting (WB), Flow Cytometry (FACS), Immunohistochemistry (Paraffin-embedded Sections) (IHC (p)) |

Product Details

| | |
|-----------------------|---|
| Immunogen: | This ENPP2 antibody is generated from rabbits immunized with a KLH conjugated synthetic peptide between 401-430 amino acids from the Central region of human ENPP2. |
| Clone: | RB17411 |
| Isotype: | Ig Fraction |
| Predicted Reactivity: | B |
| Purification: | This antibody is prepared by Saturated Ammonium Sulfate (SAS) precipitation followed by dialysis against PBS. |

Target Details

| | |
|---------|-------|
| Target: | ENPP2 |
|---------|-------|

Target Details

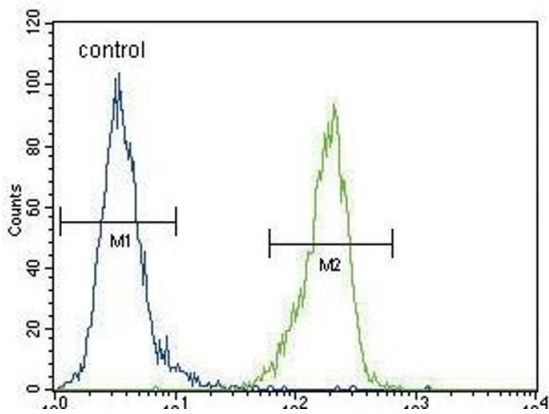
| | |
|-------------------|--|
| Alternative Name: | ENPP2 (ENPP2 Products) |
| Background: | ENPP2 functions as both a phosphodiesterase, which cleaves phosphodiester bonds at the 5' end of oligonucleotides, and a phospholipase, which catalyzes production of lysophosphatidic acid (LPA) in extracellular fluids. LPA evokes growth factor-like responses including stimulation of cell proliferation and chemotaxis. This protein stimulates the motility of tumor cells and has angiogenic properties, and its expression is upregulated in several kinds of carcinomas. This protein is secreted and further processed to make the biologically active form. |
| Molecular Weight: | 98994 |
| Gene ID: | 5168 |
| NCBI Accession: | NP_001035181 , NP_001124335 , NP_006200 |
| UniProt: | Q13822 |

Application Details

| | |
|--------------------|---|
| Application Notes: | WB: 1:1000. WB: 1:1000. IHC-P: 1:10~50. FC: 1:10~50 |
| Restrictions: | For Research Use only |

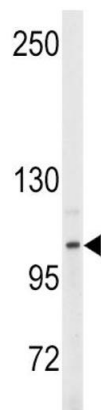
Handling

| | |
|--------------------|--|
| Format: | Liquid |
| Buffer: | Purified polyclonal antibody supplied in PBS with 0.09 % (W/V) sodium azide. |
| Preservative: | Sodium azide |
| Precaution of Use: | This product contains Sodium azide: a POISONOUS AND HAZARDOUS SUBSTANCE which should be handled by trained staff only. |
| Storage: | 4 °C,-20 °C |
| Storage Comment: | Maintain refrigerated at 2-8 °C for up to 6 months. For long term storage store at -20 °C in small aliquots to prevent freeze-thaw cycles. |
| Expiry Date: | 6 months |



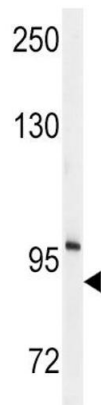
Flow Cytometry

Image 1. EN Antibody (Center) (ABIN389374 and ABIN2839470) flow cytometric analysis of MDA-M cells (right histogram) compared to a negative control cell (left histogram).FITC-conjugated goat-anti-rabbit secondary antibodies were used for the analysis.



Western Blotting

Image 2. Western blot analysis of anti-EN Antibody (Center) (ABIN389374 and ABIN2839470) in Y79 cell line lysates (35 µg/lane).EN(arrow) was detected using the purified Pab.



Western Blotting

Image 3. Western blot analysis of anti-EN Antibody (Center) (ABIN389374 and ABIN2839470) in mouse cerebellum tissue lysates (35 µg/lane).EN(arrow) was detected using the purified Pab.

Please check the [product details page](#) for more images. Overall 4 images are available for ABIN389374.