

Datasheet for ABIN389381  
**anti-HSPH1 antibody (C-Term)**[Go to Product page](#)

## 1 Image

## Overview

Quantity:	400 µL
Target:	HSPH1
Binding Specificity:	AA 717-745, C-Term
Reactivity:	Human
Host:	Rabbit
Clonality:	Polyclonal
Conjugate:	This HSPH1 antibody is un-conjugated
Application:	Western Blotting (WB)

## Product Details

Immunogen:	This HSPH1 antibody is generated from rabbits immunized with a KLH conjugated synthetic peptide between 717-745 amino acids from the C-terminal region of human HSPH1.
Clone:	RB17660
Isotype:	Ig Fraction
Purification:	This antibody is prepared by Saturated Ammonium Sulfate (SAS) precipitation followed by dialysis against PBS.

## Target Details

Target:	HSPH1
Alternative Name:	HSPH1 ( <a href="#">HSPH1 Products</a> )

## Target Details

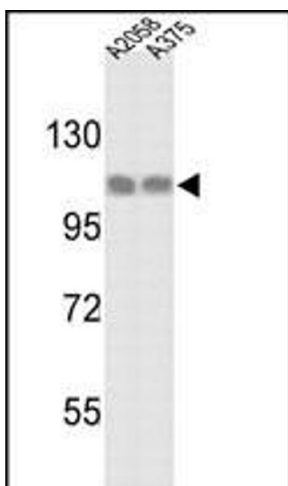
Background:	HSPH1 prevents the aggregation of denatured proteins in cells under severe stress, on which the ATP levels decrease markedly. This protein inhibits HSPA8/HSC70 ATPase and chaperone activities.
Molecular Weight:	96865
Gene ID:	10808
NCBI Accession:	<a href="#">NP_006635</a>
UniProt:	<a href="#">Q92598</a>

## Application Details

Application Notes:	WB: 1:1000
Restrictions:	For Research Use only

## Handling

Format:	Liquid
Buffer:	Purified polyclonal antibody supplied in PBS with 0.09 % (W/V) sodium azide.
Preservative:	Sodium azide
Precaution of Use:	This product contains Sodium azide: a POISONOUS AND HAZARDOUS SUBSTANCE which should be handled by trained staff only.
Storage:	4 °C, -20 °C
Storage Comment:	Maintain refrigerated at 2-8 °C for up to 6 months. For long term storage store at -20 °C in small aliquots to prevent freeze-thaw cycles.
Expiry Date:	6 months



#### Western Blotting

**Image 1.** Western blot analysis of HSPH1 Antibody (C-term) (ABIN389381 and ABIN2839476) in cell line lysates (35 µg/lane). HSPH1 (arrow) was detected using the purified Pab.