

Datasheet for ABIN389393
anti-CDA antibody (C-Term)[Go to Product page](#)

3 Images

Overview

Quantity:	400 µL
Target:	CDA
Binding Specificity:	AA 118-146, C-Term
Reactivity:	Human, Mouse
Host:	Rabbit
Clonality:	Polyclonal
Conjugate:	This CDA antibody is un-conjugated
Application:	Western Blotting (WB)

Product Details

Immunogen:	This CDA antibody is generated from rabbits immunized with a KLH conjugated synthetic peptide between 118-146 amino acids from the C-terminal region of human CDA.
Clone:	RB17606
Isotype:	Ig Fraction
Purification:	This antibody is prepared by Saturated Ammonium Sulfate (SAS) precipitation followed by dialysis against PBS.

Target Details

Target:	CDA
Alternative Name:	CDA (CDA Products)

Target Details

Background: CDA forms a homotetramer that catalyzes the irreversible hydrolytic deamination of cytidine and deoxycytidine to uridine and deoxyuridine, respectively. This protein is one of several deaminases responsible for maintaining the cellular pyrimidine pool. Mutations in the CDA gene are associated with decreased sensitivity to the cytosine nucleoside analogue cytosine arabinoside used in the treatment of certain childhood leukemias.

Molecular Weight: 16185

Gene ID: 978

NCBI Accession: [NP_001776](#)

UniProt: [P32320](#)

Application Details

Application Notes: WB: 1:1000. WB: 1:1000. WB: 1:1000

Restrictions: For Research Use only

Handling

Format: Liquid

Buffer: Purified polyclonal antibody supplied in PBS with 0.09 % (W/V) sodium azide.

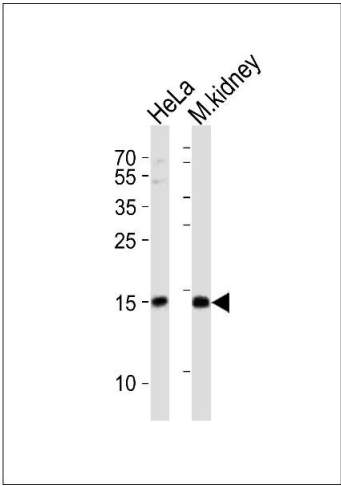
Preservative: Sodium azide

Precaution of Use: This product contains Sodium azide: a POISONOUS AND HAZARDOUS SUBSTANCE which should be handled by trained staff only.

Storage: 4 °C,-20 °C

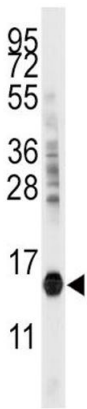
Storage Comment: Maintain refrigerated at 2-8 °C for up to 6 months. For long term storage store at -20 °C in small aliquots to prevent freeze-thaw cycles.

Expiry Date: 6 months



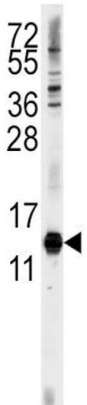
Western Blotting

Image 1. Western blot analysis of lysates from HeLa cell line, mouse kidney tissue lysate (from left to right), using CDA Antibody (C-term) (ABIN389393 and ABIN2839485). (ABIN389393 and ABIN2839485) was diluted at 1:1000 at each lane. A goat anti-rabbit IgG H&L(HRP) at 1:10000 dilution was used as the secondary antibody. Lysates at 20 µg per lane.



Western Blotting

Image 2. Western blot analysis of anti-CDA Antibody (C-term) (ABIN389393 and ABIN2839485) in mouse kidney tissue lysates (35 µg/lane). CDA (arrow) was detected using the purified Pab.



Western Blotting

Image 3. Western blot analysis of anti-CDA Antibody (C-term) (ABIN389393 and ABIN2839485) in HeLa cell line lysates (35 µg/lane). CDA (arrow) was detected using the purified Pab.