



[Go to Product page](#)

Datasheet for ABIN389397

anti-Exonuclease 1 antibody (N-Term)

2 Images

Overview

Quantity:	400 µL
Target:	Exonuclease 1 (EX01)
Binding Specificity:	AA 1-30, N-Term
Reactivity:	Human
Host:	Rabbit
Clonality:	Polyclonal
Conjugate:	This Exonuclease 1 antibody is un-conjugated
Application:	Western Blotting (WB), Immunofluorescence (IF)

Product Details

Immunogen:	This EX01 antibody is generated from rabbits immunized with a KLH conjugated synthetic peptide between 1-30 amino acids from the N-terminal region of human EX01.
Clone:	RB17682
Isotype:	Ig Fraction
Purification:	This antibody is prepared by Saturated Ammonium Sulfate (SAS) precipitation followed by dialysis against PBS.

Target Details

Target:	Exonuclease 1 (EX01)
Alternative Name:	EX01 (EX01 Products)

Target Details

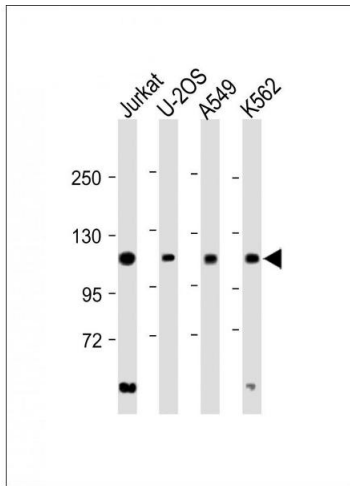
Background:	EXO1 is a protein with 5' to 3' exonuclease activity as well as an RNase H activity. This protein is similar to the Saccharomyces cerevisiae protein Exo1 which interacts with Msh2 and which is involved in mismatch repair and recombination.
Molecular Weight:	94103
Gene ID:	9156
NCBI Accession:	NP_003677 , NP_006018 , NP_569082
UniProt:	Q9UQ84
Pathways:	DNA Damage Repair , Production of Molecular Mediator of Immune Response

Application Details

Application Notes:	IF: 1:10~50. WB: 1:2000
Restrictions:	For Research Use only

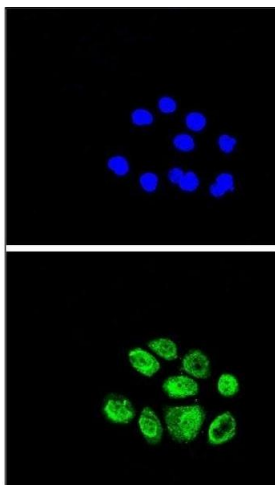
Handling

Format:	Liquid
Buffer:	Purified polyclonal antibody supplied in PBS with 0.09 % (W/V) sodium azide.
Preservative:	Sodium azide
Precaution of Use:	This product contains Sodium azide: a POISONOUS AND HAZARDOUS SUBSTANCE which should be handled by trained staff only.
Storage:	4 °C,-20 °C
Storage Comment:	Maintain refrigerated at 2-8 °C for up to 6 months. For long term storage store at -20 °C in small aliquots to prevent freeze-thaw cycles.
Expiry Date:	6 months



Western Blotting

Image 1. All lanes : Anti-EXO1 Antibody (N-term) at 1:2000 dilution Lane 1: Jurkat whole cell lysate Lane 2: U-2OS whole cell lysate Lane 3: A549 whole cell lysate Lane 4: K562 whole cell lysate Lysates/proteins at 20 µg per lane. Secondary Goat Anti-Rabbit IgG, (H+L), Peroxidase conjugated at 1/10000 dilution. Predicted band size : 94 kDa Blocking/Dilution buffer: 5 % NFDM/TBST.



Immunofluorescence

Image 2. Confocal immunofluorescent analysis of EXO1 Antibody (N-term) (ABIN389397 and ABIN2839487) with A549 cell followed by Alexa Fluor® 489-conjugated goat anti-rabbit IgG (green). DI was used to stain the cell nuclear (blue).