



[Go to Product page](#)

Datasheet for ABIN389410
anti-CD166 antibody (N-Term)

3 Images

Overview

Quantity:	400 µL
Target:	CD166 (ALCAM)
Binding Specificity:	AA 58-87, N-Term
Reactivity:	Human
Host:	Rabbit
Clonality:	Polyclonal
Conjugate:	This CD166 antibody is un-conjugated
Application:	Western Blotting (WB), Flow Cytometry (FACS), Immunohistochemistry (Paraffin-embedded Sections) (IHC (p))

Product Details

Immunogen:	This CD166 antibody is generated from rabbits immunized with a KLH conjugated synthetic peptide between 58-87 amino acids from the N-terminal region of human CD166.
Clone:	RB19989
Isotype:	Ig Fraction
Predicted Reactivity:	B, M, Rb, Rat
Purification:	This antibody is prepared by Saturated Ammonium Sulfate (SAS) precipitation followed by dialysis against PBS.

Target Details

Target:	CD166 (ALCAM)
---------	---------------

Target Details

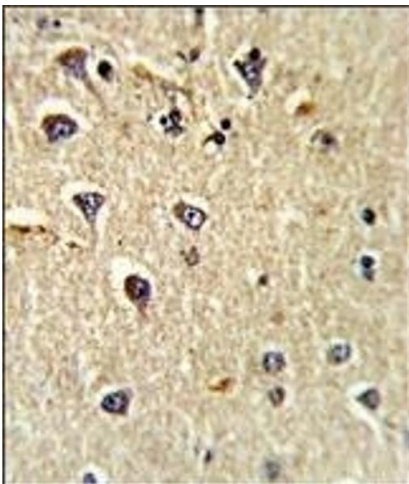
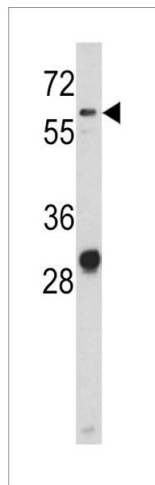
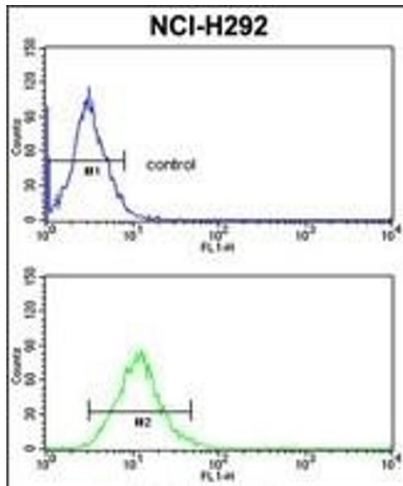
Alternative Name:	CD166 (ALCAM Products)
Background:	CD166 is cell adhesion molecule that binds to CD6. The protein is involved in neurite extension by neurons via heterophilic and homophilic interactions. It may play a role in the binding of T- and B-cells to activated leukocytes, as well as in interactions between cells of the nervous system.
Molecular Weight:	65102
Gene ID:	214
NCBI Accession:	NP_001230209 , NP_001618
UniProt:	Q13740

Application Details

Application Notes:	WB: 1:1000. IHC-P: 1:50~100. FC: 1:10~50
Restrictions:	For Research Use only

Handling

Format:	Liquid
Buffer:	Purified polyclonal antibody supplied in PBS with 0.09 % (W/V) sodium azide.
Preservative:	Sodium azide
Precaution of Use:	This product contains Sodium azide: a POISONOUS AND HAZARDOUS SUBSTANCE which should be handled by trained staff only.
Storage:	4 °C,-20 °C
Storage Comment:	Maintain refrigerated at 2-8 °C for up to 6 months. For long term storage store at -20 °C in small aliquots to prevent freeze-thaw cycles.
Expiry Date:	6 months



Flow Cytometry

Image 1. C Antibody (N-term) (ABIN389410 and ABIN2839497) flow cytometric analysis of NCI- cells (bottom histogram) compared to a negative control cell (top histogram). FITC-conjugated goat-anti-rabbit secondary antibodies were used for the analysis.

Western Blotting

Image 2. Western blot analysis of C antibody (N-term) (ABIN389410 and ABIN2839497) in NCI- cell line lysates (35 µg/lane). C (arrow) was detected using the purified Pab.

Immunohistochemistry (Paraffin-embedded Sections)

Image 3. Formalin-fixed and paraffin-embedded human brain tissue reacted with C Antibody (N-term), which was peroxidase-conjugated to the secondary antibody, followed by DAB staining. This data demonstrates the use of this antibody for immunohistochemistry, clinical relevance has not been evaluated.