



[Go to Product page](#)

Datasheet for ABIN389416
anti-PROCR antibody (AA 104-132)

3 Images

Overview

Quantity:	400 µL
Target:	PROCR
Binding Specificity:	AA 104-132
Reactivity:	Human
Host:	Rabbit
Clonality:	Polyclonal
Conjugate:	This PROCR antibody is un-conjugated
Application:	Western Blotting (WB), Immunohistochemistry (Paraffin-embedded Sections) (IHC (p)), Flow Cytometry (FACS)

Product Details

Immunogen:	This CD201 antibody is generated from rabbits immunized with a KLH conjugated synthetic peptide between 104-132 amino acids from the Central region of human CD201.
Clone:	RB17995
Isotype:	Ig Fraction
Purification:	This antibody is prepared by Saturated Ammonium Sulfate (SAS) precipitation followed by dialysis against PBS.

Target Details

Target:	PROCR
Alternative Name:	CD201 (PROCR Products)

Target Details

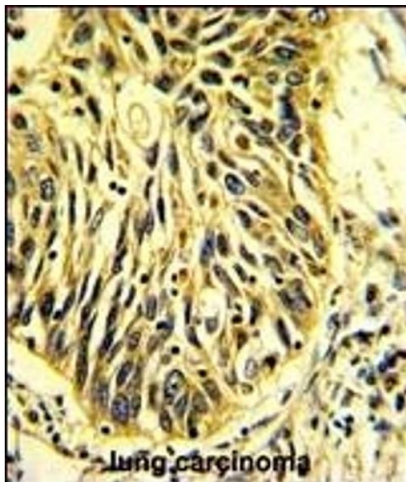
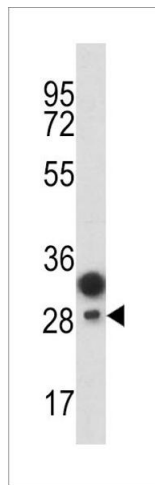
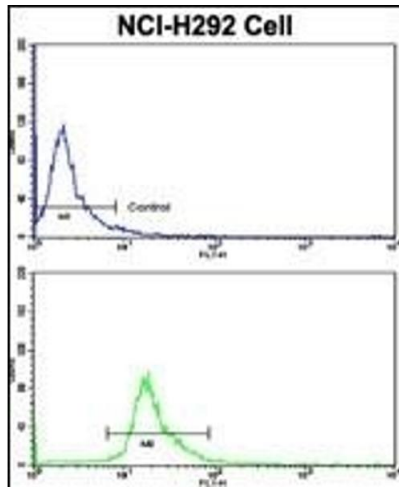
Background:	PROCR (CD201) is a receptor for activated protein C, a serine protease activated by and involved in the blood coagulation pathway. The protein is an N-glycosylated type I membrane protein that enhances the activation of protein C. Mutations in its gene have been associated with venous thromboembolism and myocardial infarction, as well as with late fetal loss during pregnancy.
Molecular Weight:	26671
Gene ID:	10544
NCBI Accession:	NP_006395
UniProt:	Q9UNN8

Application Details

Application Notes:	WB: 1:1000. IHC-P: 1:50~100. FC: 1:10~50
Restrictions:	For Research Use only

Handling

Format:	Liquid
Buffer:	Purified polyclonal antibody supplied in PBS with 0.09 % (W/V) sodium azide.
Preservative:	Sodium azide
Precaution of Use:	This product contains Sodium azide: a POISONOUS AND HAZARDOUS SUBSTANCE which should be handled by trained staff only.
Storage:	4 °C,-20 °C
Storage Comment:	Maintain refrigerated at 2-8 °C for up to 6 months. For long term storage store at -20 °C in small aliquots to prevent freeze-thaw cycles.
Expiry Date:	6 months



Flow Cytometry

Image 1. Flow cytometric analysis of NCI- cells using C Antibody (Center)(bottom histogram) compared to a negative control cell (top histogram). FITC-conjugated goat-anti-rabbit secondary antibodies were used for the analysis.

Western Blotting

Image 2. Western blot analysis of C antibody (Center) (ABIN389416 and ABIN2839501) in T47D cell line lysates (35 µg/lane). C (arrow) was detected using the purified Pab.

Immunohistochemistry (Paraffin-embedded Sections)

Image 3. Formalin-fixed and paraffin-embedded human lung carcinoma with C Antibody (Center), which was peroxidase-conjugated to the secondary antibody, followed by DAB staining. This data demonstrates the use of this antibody for immunohistochemistry, clinical relevance has not been evaluated.