



[Go to Product page](#)

Datasheet for ABIN389421  
**anti-CCT3 antibody (C-Term)**

3 Images

Overview

Quantity:	400 µL
Target:	CCT3
Binding Specificity:	AA 509-536, C-Term
Reactivity:	Human
Host:	Rabbit
Clonality:	Polyclonal
Conjugate:	This CCT3 antibody is un-conjugated
Application:	Western Blotting (WB), Flow Cytometry (FACS), Immunohistochemistry (Paraffin-embedded Sections) (IHC (p))

Product Details

Immunogen:	This CCT3 antibody is generated from rabbits immunized with a KLH conjugated synthetic peptide between 509-536 amino acids from the C-terminal region of human CCT3.
Clone:	RB20522
Isotype:	Ig Fraction
Predicted Reactivity:	B, Pr
Purification:	This antibody is purified through a protein A column, followed by peptide affinity purification.

Target Details

Target:	CCT3
---------	------

## Target Details

---

Alternative Name:	<a href="#">CCT3 (CCT3 Products)</a>
Background:	CCT3 is a molecular chaperone that is member of the chaperonin containing TCP1 complex (CCT), also known as the TCP1 ring complex (TRiC). This complex consists of two identical stacked rings, each containing eight different proteins. Unfolded polypeptides enter the central cavity of the complex and are folded in an ATP-dependent manner. The complex folds various proteins, including actin and tubulin.
Molecular Weight:	60534
Gene ID:	7203
NCBI Accession:	<a href="#">NP_001008800</a> , <a href="#">NP_005989</a>
UniProt:	<a href="#">P49368</a>

## Application Details

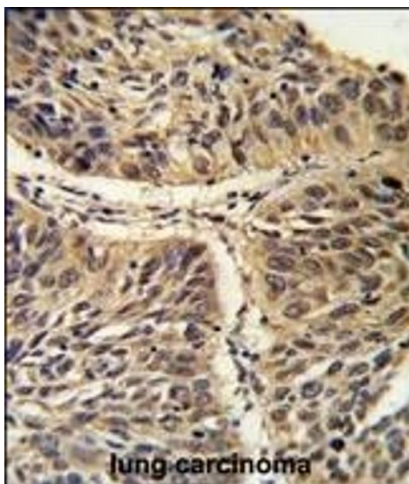
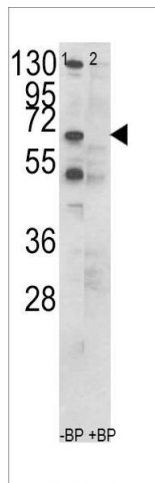
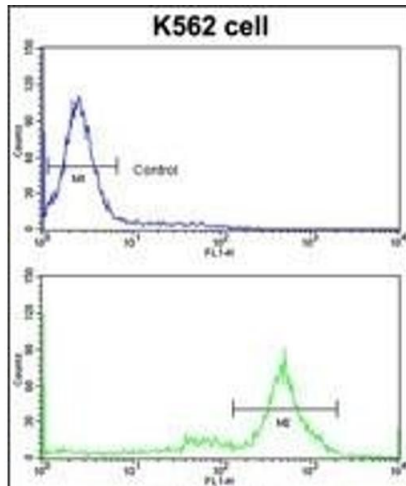
---

Application Notes:	WB: 1:1000. IHC-P: 1:50~100. FC: 1:10~50
Restrictions:	For Research Use only

## Handling

---

Format:	Liquid
Buffer:	Purified polyclonal antibody supplied in PBS with 0.09 % (W/V) sodium azide.
Preservative:	Sodium azide
Precaution of Use:	This product contains Sodium azide: a POISONOUS AND HAZARDOUS SUBSTANCE which should be handled by trained staff only.
Storage:	4 °C, -20 °C
Storage Comment:	Maintain refrigerated at 2-8 °C for up to 6 months. For long term storage store at -20 °C in small aliquots to prevent freeze-thaw cycles.
Expiry Date:	6 months



### Flow Cytometry

**Image 1.** Flow cytometric analysis of K562 cells using CCT3 Antibody (C-term)(bottom histogram) compared to a negative control cell (top histogram) FITC-conjugated goat-anti-rabbit secondary antibodies were used for the analysis.

### Western Blotting

**Image 2.** Western blot analysis of CCT3 Antibody (C-term) (ABIN389421 and ABIN2839504) in K562 cell line lysates (35 µg/lane). CCT3 (arrow) was detected using the purified Pab.

### Immunohistochemistry (Paraffin-embedded Sections)

**Image 3.** Formalin-fixed and paraffin-embedded human lung carcinoma reacted with CCT3 Antibody (C-term), which was peroxidase-conjugated to the secondary antibody, followed by DAB staining. This data demonstrates the use of this antibody for immunohistochemistry, clinical relevance has not been evaluated.