

Datasheet for ABIN389422  
**anti-CCT3 antibody (AA 298-326)**[Go to Product page](#)

## 4 Images

## Overview

Quantity:	400 µL
Target:	CCT3
Binding Specificity:	AA 298-326
Reactivity:	Human
Host:	Rabbit
Clonality:	Polyclonal
Conjugate:	This CCT3 antibody is un-conjugated
Application:	Western Blotting (WB), Flow Cytometry (FACS), Immunohistochemistry (Paraffin-embedded Sections) (IHC (p))

## Product Details

Immunogen:	This CCT3 antibody is generated from rabbits immunized with a KLH conjugated synthetic peptide between 298-326 amino acids from the Central region of human CCT3.
Clone:	RB20521
Isotype:	Ig Fraction
Predicted Reactivity:	B, Pr, M, Rat, X
Purification:	This antibody is prepared by Saturated Ammonium Sulfate (SAS) precipitation followed by dialysis against PBS.

## Target Details

Target:	CCT3
---------	------

## Target Details

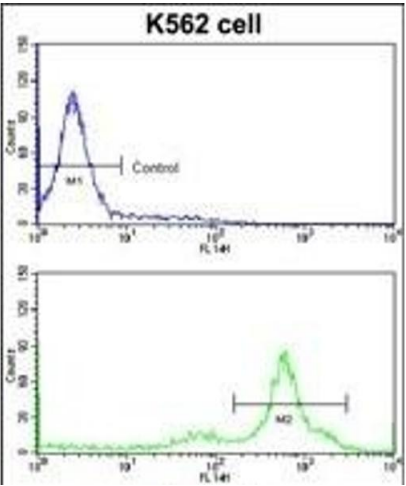
Alternative Name:	CCT3 ( <a href="#">CCT3 Products</a> )
Background:	CCT3 is a molecular chaperone that is member of the chaperonin containing TCP1 complex (CCT), also known as the TCP1 ring complex (TRiC). This complex consists of two identical stacked rings, each containing eight different proteins. Unfolded polypeptides enter the central cavity of the complex and are folded in an ATP-dependent manner. The complex folds various proteins, including actin and tubulin.
Molecular Weight:	60534
Gene ID:	7203
NCBI Accession:	<a href="#">NP_001008800</a> , <a href="#">NP_005989</a>
UniProt:	<a href="#">P49368</a>

## Application Details

Application Notes:	WB: 1:1000. WB: 1:1000. IHC-P: 1:50~100. FC: 1:10~50
Restrictions:	For Research Use only

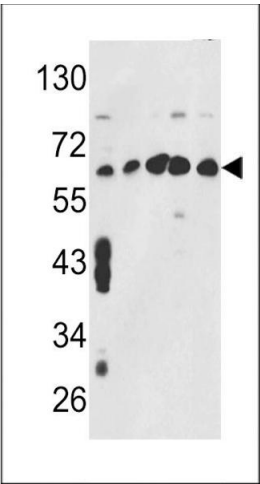
## Handling

Format:	Liquid
Buffer:	Purified polyclonal antibody supplied in PBS with 0.09 % (W/V) sodium azide.
Preservative:	Sodium azide
Precaution of Use:	This product contains Sodium azide: a POISONOUS AND HAZARDOUS SUBSTANCE which should be handled by trained staff only.
Storage:	4 °C, -20 °C
Storage Comment:	Maintain refrigerated at 2-8 °C for up to 6 months. For long term storage store at -20 °C in small aliquots to prevent freeze-thaw cycles.
Expiry Date:	6 months



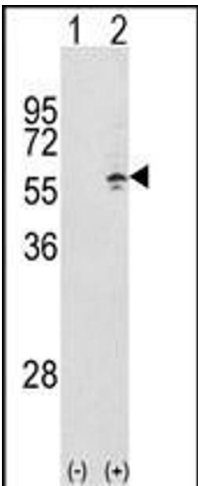
Flow Cytometry

**Image 1.** Flow cytometric analysis of K562 cells using CCT3 Antibody (Center)(bottom histogram) compared to a negative control cell (top histogram)FITC-conjugated goat-anti-rabbit secondary antibodies were used for the analysis.



Western Blotting

**Image 2.** Western blot analysis of CCT3 Antibody (Center) (ABIN389422 and ABIN2839505) in MCF7,CEM,K562,HL-60,Hela cell line lysates (35 µg/lane).CCT3 (arrow) was detected using the purified Pab.



Western Blotting

**Image 3.** Western blot analysis of CCT3 (arrow) using rabbit polyclonal CCT3 Antibody (Center) (ABIN389422 and ABIN2839505). 293 cell lysates (2 µg/lane) either nontransfected (Lane 1) or transiently transfected with the CCT3 gene (Lane 2).

Please check the [product details page](#) for more images. Overall 4 images are available for ABIN389422.