

Datasheet for ABIN389440  
**anti-ERP29 antibody (AA 151-179)**

4 Images

1 Publication

[Go to Product page](#)

## Overview

|                      |   |
|----------------------|---|
| Quantity:            | 400 µL  |
| Target:              | ERP29   |
| Binding Specificity: | AA 151-179  |
| Reactivity:          | Human   |
| Host:                | Rabbit  |
| Clonality:           | Polyclonal  |
| Conjugate:           | This ERP29 antibody is un-conjugated  |
| Application:         | Western Blotting (WB), Immunohistochemistry (Paraffin-embedded Sections) (IHC (p)), Flow Cytometry (FACS) |

## Product Details

|               |   |
|---------------|---|
| Immunogen:    | This ERP29 antibody is generated from rabbits immunized with a KLH conjugated synthetic peptide between 151-179 amino acids from the Central region of human ERP29. |
| Clone:        | RB20540   |
| Isotype:      | Ig Fraction   |
| Purification: | This antibody is prepared by Saturated Ammonium Sulfate (SAS) precipitation followed by dialysis against PBS.   |

## Target Details

|                   |  |
|-------------------|--|
| Target:           | ERP29                                    |
| Alternative Name: | ERP29 ( <a href="#">ERP29 Products</a> ) |

## Target Details

|                 |   |
|-----------------|---|
| Background:     | ERP29 shows sequence similarity to the protein disulfide isomerase family. However, it lacks the thioredoxin motif characteristic of this family, suggesting that this protein does not function as a disulfide isomerase. The protein dimerizes and is thought to play a role in the processing of secretory proteins within the ER. |
| Gene ID:        | 10961   |
| NCBI Accession: | <a href="#">NP_001029197</a> , <a href="#">NP_006808</a>  |
| UniProt:        | <a href="#">P30040</a>  |

## Application Details

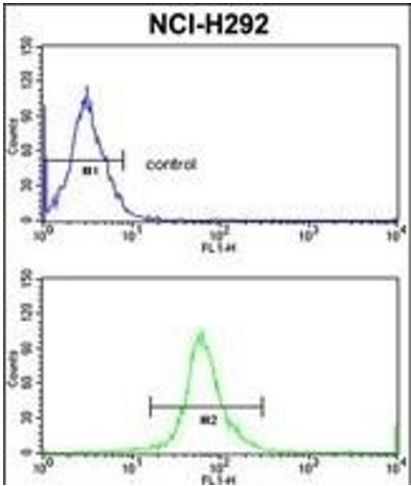
|                    |  |
|--------------------|--|
| Application Notes: | WB: 1:1000. WB: 1:1000. IHC-P: 1:50~100. FC: 1:10~50 |
| Restrictions:      | For Research Use only                                |

## Handling

|                    |  |
|--------------------|--|
| Format:            | Liquid   |
| Buffer:            | Purified polyclonal antibody supplied in PBS with 0.09 % (W/V) sodium azide.   |
| Preservative:      | Sodium azide   |
| Precaution of Use: | This product contains Sodium azide: a POISONOUS AND HAZARDOUS SUBSTANCE which should be handled by trained staff only.                     |
| Storage:           | 4 °C, -20 °C   |
| Storage Comment:   | Maintain refrigerated at 2-8 °C for up to 6 months. For long term storage store at -20 °C in small aliquots to prevent freeze-thaw cycles. |
| Expiry Date:       | 6 months   |

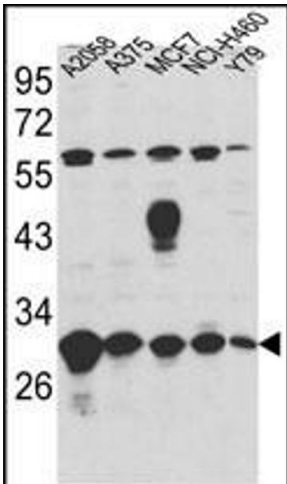
## Publications

|                   |   |
|-------------------|---|
| Product cited in: | Wang, Wang, Liu, Liu, Tay, Walsh, Yang, Wu: "CRISPR/Cas9 mediated genome editing of <i>Helicoverpa armigera</i> with mutations of an ABC transporter gene <i>HaABCA2</i> confers resistance to <i>Bacillus thuringiensis</i> Cry2A toxins." in: <b>Insect biochemistry and molecular biology</b> , Vol. 87, pp. 147-153, (2017) ( <a href="#">PubMed</a> ). |
|-------------------|---|



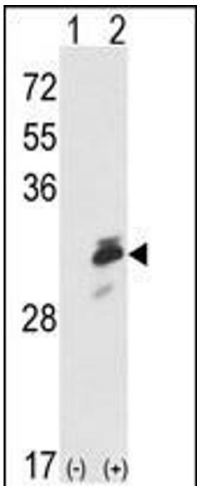
### Flow Cytometry

**Image 1.** ERP29 Antibody (Center) (ABIN389440 and ABIN2839513) flow cytometric analysis of NCI- cells (bottom histogram) compared to a negative control cell (top histogram). FITC-conjugated goat-anti-rabbit secondary antibodies were used for the analysis.



### Western Blotting

**Image 2.** Western blot analysis of ERP29 Antibody (Center) (ABIN389440 and ABIN2839513) in „MCF7,NCI-,Y79 cell line lysates (35 µg/lane). ERP29 (arrow) was detected using the purified Pab.



### Western Blotting

**Image 3.** Western blot analysis of ERP29 (arrow) using rabbit polyclonal ERP29 Antibody (Center) (ABIN389440 and ABIN2839513). 293 cell lysates (2 µg/lane) either nontransfected (Lane 1) or transiently transfected with the ERP29 gene (Lane 2).

Please check the [product details page](#) for more images. Overall 4 images are available for ABIN389440.