

Datasheet for ABIN389451
anti-BAG1 antibody (C-Term)[Go to Product page](#)

4 Images

Overview

Quantity:	400 µL
Target:	BAG1
Binding Specificity:	AA 258-285, C-Term
Reactivity:	Human
Host:	Rabbit
Clonality:	Polyclonal
Conjugate:	This BAG1 antibody is un-conjugated
Application:	Western Blotting (WB), Immunofluorescence (IF), Immunohistochemistry (Paraffin-embedded Sections) (IHC (p)), Flow Cytometry (FACS)

Product Details

Immunogen:	This BAG1 antibody is generated from rabbits immunized with a KLH conjugated synthetic peptide between 258-285 amino acids from the C-terminal region of human BAG1.
Clone:	RB20839
Isotype:	Ig Fraction
Purification:	This antibody is prepared by Saturated Ammonium Sulfate (SAS) precipitation followed by dialysis against PBS.

Target Details

Target:	BAG1
Alternative Name:	BAG1 (BAG1 Products)

Target Details

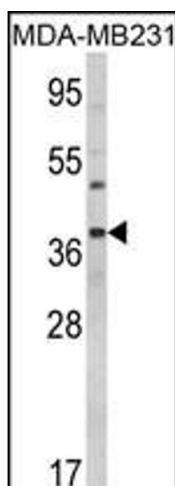
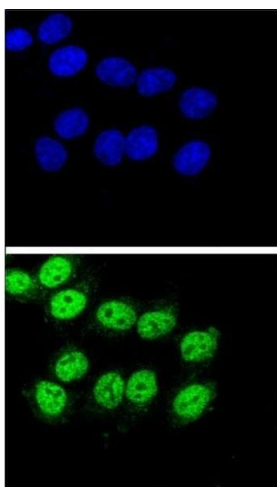
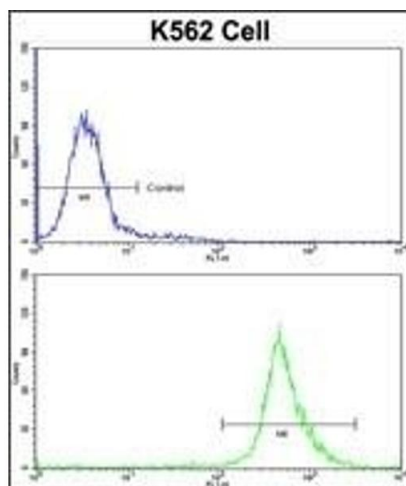
Background:	BAG1 binds to BCL2 and is referred to as BCL2-associated athanogene. It enhances the anti-apoptotic effects of BCL2 and represents a link between growth factor receptors and anti-apoptotic mechanisms.
Molecular Weight:	38779
Gene ID:	573
NCBI Accession:	NP_001165886 , NP_004314
UniProt:	Q99933

Application Details

Application Notes:	IF: 1:10~50. WB: 1:1000. IHC-P: 1:50~100. FC: 1:10~50
Restrictions:	For Research Use only

Handling

Format:	Liquid
Buffer:	Purified polyclonal antibody supplied in PBS with 0.09 % (W/V) sodium azide.
Preservative:	Sodium azide
Precaution of Use:	This product contains Sodium azide: a POISONOUS AND HAZARDOUS SUBSTANCE which should be handled by trained staff only.
Storage:	4 °C, -20 °C
Storage Comment:	Maintain refrigerated at 2-8 °C for up to 6 months. For long term storage store at -20 °C in small aliquots to prevent freeze-thaw cycles.
Expiry Date:	6 months



Flow Cytometry

Image 1. Flow cytometric analysis of K562 cells using BAG1 Antibody (C-term) (bottom histogram) compared to a negative control cell (top histogram). FITC-conjugated goat anti-rabbit secondary antibodies were used for the analysis.

Immunofluorescence

Image 2. Confocal immunofluorescent analysis of BAG1 Antibody (C-term) (ABIN389451 and ABIN2839520) with HeLa cells followed by Alexa Fluor® 488-conjugated goat anti-rabbit IgG (green). DAPI was used to stain the cell nuclei (blue).

Western Blotting

Image 3. Western blot analysis of BAG1 Antibody (C-term) (ABIN389451 and ABIN2839520) in MDA-MB231 cell line lysates (35 µg/lane). BAG1 (arrow) was detected using the purified Pab.

Please check the [product details page](#) for more images. Overall 4 images are available for ABIN389451.