

Datasheet for ABIN389455  
**anti-PSMD13 antibody (C-Term)**[Go to Product page](#)

## 4 Images

## Overview

Quantity:	400 µL
Target:	PSMD13
Binding Specificity:	AA 269-298, C-Term
Reactivity:	Human
Host:	Rabbit
Clonality:	Polyclonal
Conjugate:	This PSMD13 antibody is un-conjugated
Application:	Western Blotting (WB), Flow Cytometry (FACS), Immunohistochemistry (Paraffin-embedded Sections) (IHC (p))

## Product Details

Immunogen:	This PSMD13 antibody is generated from rabbits immunized with a KLH conjugated synthetic peptide between 269-298 amino acids from the C-terminal region of human PSMD13.
Clone:	RB21174
Isotype:	Ig Fraction
Predicted Reactivity:	C, M, Rat
Purification:	This antibody is purified through a protein A column, followed by peptide affinity purification.

## Target Details

Target:	PSMD13
---------	--------

## Target Details

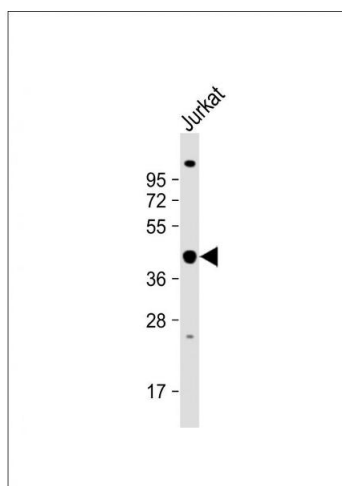
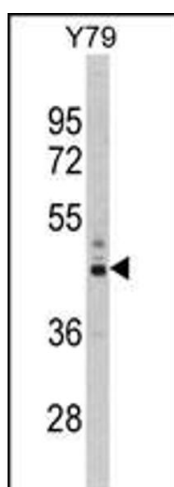
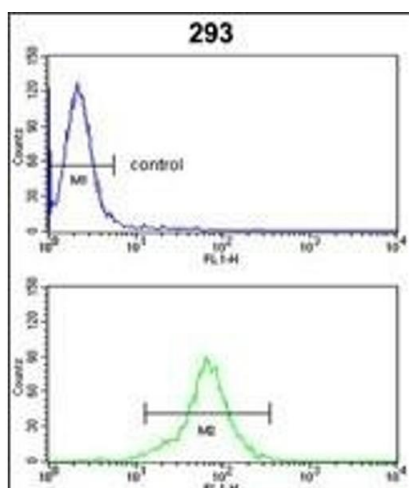
Alternative Name:	PSMD13 ( <a href="#">PSMD13 Products</a> )
Background:	PSMD13 acts as a regulatory subunit of the 26S proteasome which is involved in the ATP-dependent degradation of ubiquitinated proteins.
Molecular Weight:	42945
Gene ID:	5719
NCBI Accession:	<a href="#">NP_002808</a> , <a href="#">NP_787128</a>
UniProt:	<a href="#">Q9UNM6</a>
Pathways:	<a href="#">Mitotic G1-G1/S Phases</a> , <a href="#">DNA Replication</a> , <a href="#">Synthesis of DNA</a> , <a href="#">Ubiquitin Proteasome Pathway</a>

## Application Details

Application Notes:	WB: 1:1000. WB: 1:1000. IHC-P: 1:50~100. FC: 1:10~50
Restrictions:	For Research Use only

## Handling

Format:	Liquid
Buffer:	Purified polyclonal antibody supplied in PBS with 0.09 % (W/V) sodium azide.
Preservative:	Sodium azide
Precaution of Use:	This product contains Sodium azide: a POISONOUS AND HAZARDOUS SUBSTANCE which should be handled by trained staff only.
Storage:	4 °C,-20 °C
Storage Comment:	Maintain refrigerated at 2-8 °C for up to 6 months. For long term storage store at -20 °C in small aliquots to prevent freeze-thaw cycles.
Expiry Date:	6 months



### Flow Cytometry

**Image 1.** PSMD13 Antibody (C-term) (ABIN389455 and ABIN2839521) flow cytometric analysis of 293 cells (bottom histogram) compared to a negative control cell (top histogram). FITC-conjugated goat-anti-rabbit secondary antibodies were used for the analysis.

### Western Blotting

**Image 2.** Western blot analysis of PSMD13 Antibody (C-term) (ABIN389455 and ABIN2839521) in Y79 cell line lysates (35 µg/lane). PSMD13 (arrow) was detected using the purified Pab.

### Western Blotting

**Image 3.** Anti-PSMD13 Antibody (C-term) at 1:1000 dilution + Jurkat whole cell lysate Lysates/proteins at 20 µg per lane. Secondary Goat Anti-Rabbit IgG, (H+L), Peroxidase conjugated at 1/10000 dilution. Predicted band size : 43 kDa Blocking/Dilution buffer: 5 % NFDM/TBST.

Please check the [product details page](#) for more images. Overall 4 images are available for ABIN389455.