

Datasheet for ABIN389457  
**anti-TPI1 antibody (N-Term)**

## 5 Images

[Go to Product page](#)

## Overview

Quantity:	400 µL
Target:	TPI1
Binding Specificity:	AA 68-96, N-Term
Reactivity:	Human, Mouse
Host:	Rabbit
Clonality:	Polyclonal
Conjugate:	This TPI1 antibody is un-conjugated
Application:	Western Blotting (WB), Immunohistochemistry (Paraffin-embedded Sections) (IHC (p)), Flow Cytometry (FACS)

## Product Details

Immunogen:	This TPI1 antibody is generated from rabbits immunized with a KLH conjugated synthetic peptide between 68-96 amino acids from the N-terminal region of human TPI1.
Clone:	RB20861
Isotype:	Ig Fraction
Predicted Reactivity:	B, Pr, Pig, Rb, Rat
Purification:	This antibody is prepared by Saturated Ammonium Sulfate (SAS) precipitation followed by dialysis against PBS.

## Target Details

Target:	TPI1
---------	------

### Target Details

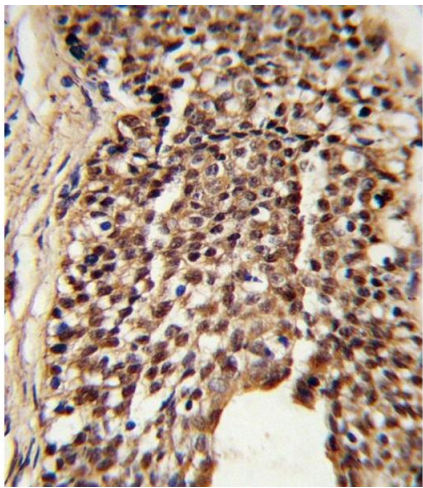
Alternative Name:	TPI1 ( <a href="#">TPI1 Products</a> )
Background:	TPI1 is an enzyme, consisting of two identical proteins, which catalyzes the isomerization of glyceraldehydes 3-phosphate (G3P) and dihydroxy-acetone phosphate (DHAP) in glycolysis and gluconeogenesis.
Molecular Weight:	26669
Gene ID:	7167
NCBI Accession:	<a href="#">NP_000356</a> , <a href="#">NP_001152759</a> , <a href="#">NP_001244955</a>
UniProt:	<a href="#">P60174</a>
Pathways:	<a href="#">Cell RedoxHomeostasis</a>

### Application Details

Application Notes:	WB: 1:1000. WB: 1:1000. WB: 1:1000. IHC-P: 1:10~50. FC: 1:10~50
Restrictions:	For Research Use only

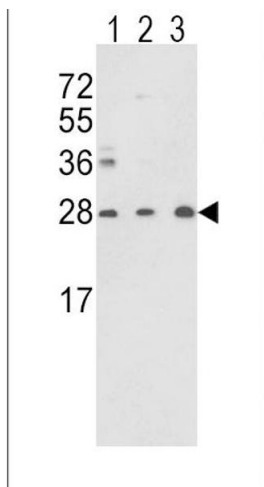
### Handling

Format:	Liquid
Buffer:	Purified polyclonal antibody supplied in PBS with 0.09 % (W/V) sodium azide.
Preservative:	Sodium azide
Precaution of Use:	This product contains Sodium azide: a POISONOUS AND HAZARDOUS SUBSTANCE which should be handled by trained staff only.
Storage:	4 °C,-20 °C
Storage Comment:	Maintain refrigerated at 2-8 °C for up to 6 months. For long term storage store at -20 °C in small aliquots to prevent freeze-thaw cycles.
Expiry Date:	6 months



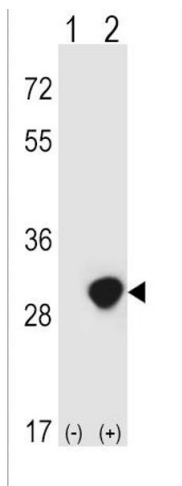
**Immunohistochemistry (Paraffin-embedded Sections)**

**Image 1.** Formalin-fixed and paraffin-embedded human prostate carcinoma reacted with TPI1 Antibody (N-term), which was peroxidase-conjugated to the secondary antibody, followed by DAB staining. This data demonstrates the use of this antibody for immunohistochemistry, clinical relevance has not been evaluated.



**Western Blotting**

**Image 2.** Western blot analysis of TPI1 Antibody (N-term) (ABIN389457 and ABIN2839524) in Y79(lane 1),CEM(lane 2) cell line and mouse brain tissue(lane 3) lysates (35 µg/lane). TPI1 (arrow) was detected using the purified Pab.(2 µg/mL)



**Western Blotting**

**Image 3.** Western blot analysis of TPI1 (arrow) using rabbit polyclonal TPI1 Antibody (N-term) (ABIN389457 and ABIN2839524). 293 cell lysates (2 µg/lane) either nontransfected (Lane 1) or transiently transfected (Lane 2) with the TPI1 gene.

Please check the [product details page](#) for more images. Overall 5 images are available for ABIN389457.