

Datasheet for ABIN389460
anti-WDR1 antibody (C-Term)[Go to Product page](#)

1 Image

Overview

Quantity:	400 µL
Target:	WDR1
Binding Specificity:	AA 548-577, C-Term
Reactivity:	Human
Host:	Rabbit
Clonality:	Polyclonal
Conjugate:	This WDR1 antibody is un-conjugated
Application:	Western Blotting (WB)

Product Details

Immunogen:	This WDR1 antibody is generated from rabbits immunized with a KLH conjugated synthetic peptide between 548-577 amino acids from the C-terminal region of human WDR1.
Clone:	RB20869
Isotype:	Ig Fraction
Predicted Reactivity:	B
Purification:	This antibody is prepared by Saturated Ammonium Sulfate (SAS) precipitation followed by dialysis against PBS.

Target Details

Target:	WDR1
---------	------

Target Details

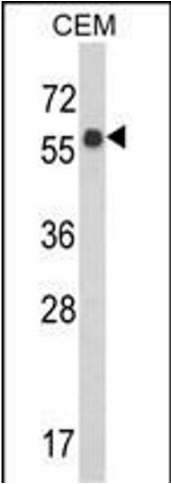
Alternative Name:	WDR1 (WDR1 Products)
Background:	WDR1 is a protein containing 9 WD repeats. WD repeats are approximately 30- to 40-amino acid domains containing several conserved residues, mostly including a trp-asp at the C-terminal end. WD domains are involved in protein-protein interactions. This protein may help induce the disassembly of actin filaments.
Molecular Weight:	66194
Gene ID:	9948
NCBI Accession:	NP_005103 , NP_059830
UniProt:	O75083
Pathways:	Sensory Perception of Sound

Application Details

Application Notes:	WB: 1:1000
Restrictions:	For Research Use only

Handling

Format:	Liquid
Buffer:	Purified polyclonal antibody supplied in PBS with 0.09 % (W/V) sodium azide.
Preservative:	Sodium azide
Precaution of Use:	This product contains Sodium azide: a POISONOUS AND HAZARDOUS SUBSTANCE which should be handled by trained staff only.
Storage:	4 °C, -20 °C
Storage Comment:	Maintain refrigerated at 2-8 °C for up to 6 months. For long term storage store at -20 °C in small aliquots to prevent freeze-thaw cycles.
Expiry Date:	6 months



Western Blotting

Image 1. Western blot analysis of WDR1 Antibody (C-term) (ABIN389460 and ABIN2839527) in CEM cell line lysates (35 µg/lane).WDR1 (arrow) was detected using the purified Pab.