

Datasheet for ABIN389462  
**anti-PABP antibody (AA 250-279)**

## 2 Images

[Go to Product page](#)

## Overview

Quantity:	400 µL
Target:	PABP (PABPC1)
Binding Specificity:	AA 250-279
Reactivity:	Human, Mouse
Host:	Rabbit
Clonality:	Polyclonal
Conjugate:	This PABP antibody is un-conjugated
Application:	Western Blotting (WB), Immunohistochemistry (Paraffin-embedded Sections) (IHC (p))

## Product Details

Immunogen:	This PABPC1 antibody is generated from rabbits immunized with a KLH conjugated synthetic peptide between 250-279 amino acids from the Central region of human PABPC1.
Clone:	RB20873
Isotype:	Ig Fraction
Predicted Reactivity:	B, Rat, X
Purification:	This antibody is prepared by Saturated Ammonium Sulfate (SAS) precipitation followed by dialysis against PBS.

## Target Details

Target:	PABP (PABPC1)
---------	---------------

## Target Details

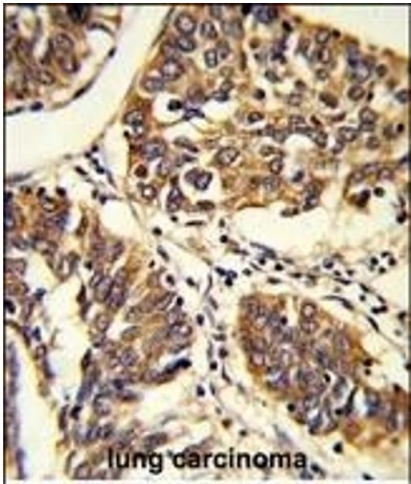
Alternative Name:	PABPC1 ( <a href="#">PABPC1 Products</a> )
Background:	PABPC1 binds the poly(A) tail of mRNA. It may be involved in cytoplasmic regulatory processes of mRNA metabolism such as pre-mRNA splicing. Its function in translational initiation regulation can either be enhanced by PAIP1 or repressed by PAIP2. PABPC1 can probably bind to cytoplasmic RNA sequences other than poly(A) in vivo. It may be involved in translationally coupled mRNA turnover. Implicated with other RNA-binding proteins in the cytoplasmic deadenylation/translational and decay interplay of the FOS mRNA mediated by the major coding-region determinant of instability (mCRD) domain.
Molecular Weight:	70671
Gene ID:	26986
NCBI Accession:	<a href="#">NP_002559</a>
UniProt:	<a href="#">P11940</a>
Pathways:	<a href="#">SARS-CoV-2 Protein Interactome</a>

## Application Details

Application Notes:	WB: 1:1000. IHC-P: 1:50~100
Restrictions:	For Research Use only

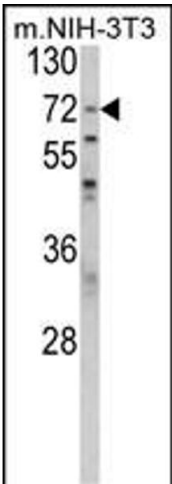
## Handling

Format:	Liquid
Buffer:	Purified polyclonal antibody supplied in PBS with 0.09 % (W/V) sodium azide.
Preservative:	Sodium azide
Precaution of Use:	This product contains Sodium azide: a POISONOUS AND HAZARDOUS SUBSTANCE which should be handled by trained staff only.
Storage:	4 °C, -20 °C
Storage Comment:	Maintain refrigerated at 2-8 °C for up to 6 months. For long term storage store at -20 °C in small aliquots to prevent freeze-thaw cycles.
Expiry Date:	6 months



**Immunohistochemistry (Paraffin-embedded Sections)**

**Image 1.** Formalin-fixed and raffin-embedded human lung carcinoma reacted with BPC1 Antibody (Center), which was peroxidase-conjugated to the secondary antibody, followed by DAB staining. This data demonstrates the use of this antibody for immunohistochemistry, clinical relevance has not been evaluated.



**Western Blotting**

**Image 2.** Western blot analysis of BPC1 Antibody (Center) (ABIN389462 and ABIN2839528) in NIH-3T3 cell line lysates (35 µg/lane). BPC1 (arrow) was detected using the purified b.