

Datasheet for ABIN389465
anti-PDIA3 antibody (AA 192-220)[Go to Product page](#)

4 Images

Overview

Quantity:	400 µL
Target:	PDIA3
Binding Specificity:	AA 192-220
Reactivity:	Human
Host:	Rabbit
Clonality:	Polyclonal
Conjugate:	This PDIA3 antibody is un-conjugated
Application:	Western Blotting (WB), Immunohistochemistry (Paraffin-embedded Sections) (IHC (p)), Flow Cytometry (FACS)

Product Details

Immunogen:	This PDIA3 antibody is generated from rabbits immunized with a KLH conjugated synthetic peptide between 192-220 amino acids from the Central region of human PDIA3.
Clone:	RB20876
Isotype:	Ig Fraction
Predicted Reactivity:	B
Purification:	This antibody is prepared by Saturated Ammonium Sulfate (SAS) precipitation followed by dialysis against PBS.

Target Details

Target:	PDIA3
---------	-------

Target Details

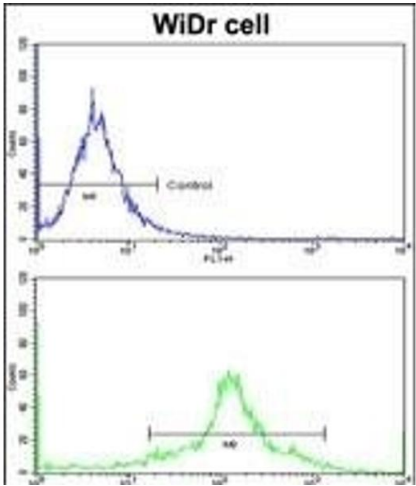
Alternative Name:	PDIA3 (PDIA3 Products)
Background:	PDIA3 is the endoplasmic reticulum that interacts with lectin chaperones calreticulin and calnexin to modulate folding of newly synthesized glycoproteins. The protein was once thought to be a phospholipase, however, it has been demonstrated that the protein actually has protein disulfide isomerase activity. It is thought that complexes of lectins and this protein mediate protein folding by promoting formation of disulfide bonds in their glycoprotein substrates.
Molecular Weight:	56782
Gene ID:	2923
NCBI Accession:	NP_005304
UniProt:	P30101
Pathways:	Maintenance of Protein Location , Protein targeting to Nucleus , Cell RedoxHomeostasis

Application Details

Application Notes:	WB: 1:1000. WB: 1:1000. IHC-P: 1:50~100. FC: 1:10~50
Restrictions:	For Research Use only

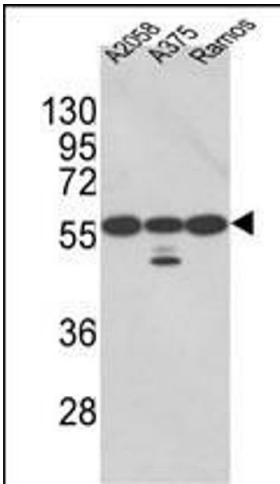
Handling

Format:	Liquid
Buffer:	Purified polyclonal antibody supplied in PBS with 0.09 % (W/V) sodium azide.
Preservative:	Sodium azide
Precaution of Use:	This product contains Sodium azide: a POISONOUS AND HAZARDOUS SUBSTANCE which should be handled by trained staff only.
Storage:	4 °C,-20 °C
Storage Comment:	Maintain refrigerated at 2-8 °C for up to 6 months. For long term storage store at -20 °C in small aliquots to prevent freeze-thaw cycles.
Expiry Date:	6 months



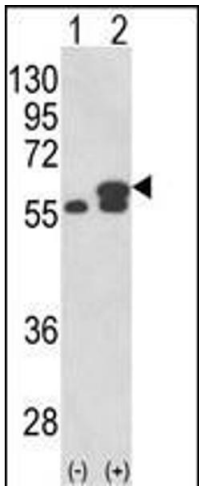
Flow Cytometry

Image 1. Flow cytometric analysis of WiDr cells using PDIA3 Antibody (Center)(bottom histogram) compared to a negative control cell (top histogram). FITC-conjugated goat-anti-rabbit secondary antibodies were used for the analysis.



Western Blotting

Image 2. Western blot analysis of PDIA3 Antibody (Center) (ABIN389465 and ABIN2839530) in , , Ramos cell line lysates (35 µg/lane). PDIA3 (arrow) was detected using the purified Pab.(2 µg/mL)



Western Blotting

Image 3. Western blot analysis of PDIA3 (arrow) using rabbit polyclonal PDIA3 Antibody (Center) (ABIN389465 and ABIN2839530). 293 cell lysates (2 µg/lane) either nontransfected (Lane 1) or transiently transfected with the PDIA3 gene (Lane 2).

Please check the [product details page](#) for more images. Overall 4 images are available for ABIN389465.