

Datasheet for ABIN389471

anti-Peroxiredoxin 6 antibody (C-Term)

4 Images

[Go to Product page](#)

Overview

| | |
|----------------------|---|
| Quantity: | 400 µL |
| Target: | Peroxiredoxin 6 (PRDX6) |
| Binding Specificity: | AA 197-224, C-Term |
| Reactivity: | Human |
| Host: | Rabbit |
| Clonality: | Polyclonal |
| Conjugate: | This Peroxiredoxin 6 antibody is un-conjugated |
| Application: | Western Blotting (WB), Flow Cytometry (FACS), Immunohistochemistry (Paraffin-embedded Sections) (IHC (p)) |

Product Details

| | |
|-----------------------|--|
| Immunogen: | This PRDX6 antibody is generated from rabbits immunized with a KLH conjugated synthetic peptide between 197-224 amino acids from the C-terminal region of human PRDX6. |
| Clone: | RB20894 |
| Isotype: | Ig Fraction |
| Predicted Reactivity: | B, C, Pr, M, Pig, Rat |
| Purification: | This antibody is prepared by Saturated Ammonium Sulfate (SAS) precipitation followed by dialysis against PBS. |

Target Details

| | |
|---------|-------------------------|
| Target: | Peroxiredoxin 6 (PRDX6) |
|---------|-------------------------|

Target Details

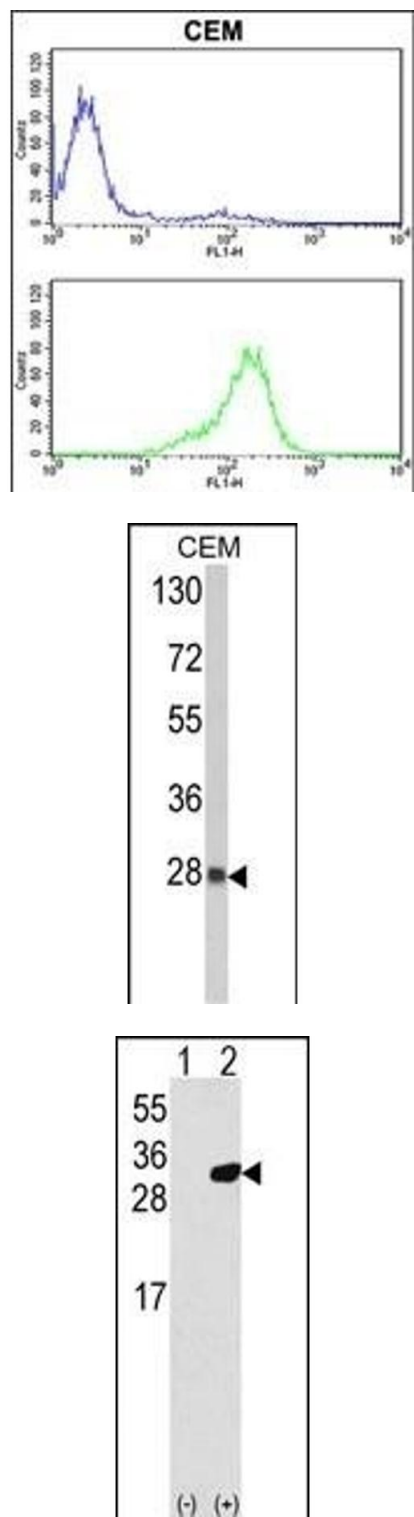
| | |
|-------------------|--|
| Alternative Name: | PRDX6 (PRDX6 Products) |
| Background: | PRDX6 is a member of the thiol-specific antioxidant protein family. This protein is a bifunctional enzyme with two distinct active sites. It is involved in redox regulation of the cell, it can reduce H ₂ O ₂ and short chain organic, fatty acid, and phospholipid hydroperoxides. It may play a role in the regulation of phospholipid turnover as well as in protection against oxidative injury. |
| Molecular Weight: | 25035 |
| Gene ID: | 9588 |
| NCBI Accession: | NP_004896 |
| UniProt: | P30041 |

Application Details

| | |
|--------------------|--|
| Application Notes: | WB: 1:1000. WB: 1:1000. IHC-P: 1:50~100. FC: 1:10~50 |
| Restrictions: | For Research Use only |

Handling

| | |
|--------------------|--|
| Format: | Liquid |
| Buffer: | Purified polyclonal antibody supplied in PBS with 0.09 % (W/V) sodium azide. |
| Preservative: | Sodium azide |
| Precaution of Use: | This product contains Sodium azide: a POISONOUS AND HAZARDOUS SUBSTANCE which should be handled by trained staff only. |
| Storage: | 4 °C, -20 °C |
| Storage Comment: | Maintain refrigerated at 2-8 °C for up to 6 months. For long term storage store at -20 °C in small aliquots to prevent freeze-thaw cycles. |
| Expiry Date: | 6 months |



Flow Cytometry

Image 1. PRDX6 Antibody (C-term) (ABIN389471 and ABIN2839535) flow cytometric analysis of CEM cells (bottom histogram) compared to a negative control cell (top histogram). FITC-conjugated goat-anti-rabbit secondary antibodies were used for the analysis.

Western Blotting

Image 2. Western blot analysis of PRDX6 Antibody (C-term) (ABIN389471 and ABIN2839535) in CEM cell line lysates (35 µg/lane). PRDX6 (arrow) was detected using the purified Pab.

Western Blotting

Image 3. Western blot analysis of PRDX6 (arrow) using rabbit polyclonal PRDX6 Antibody (C-term) (R). 293 cell lysates (2 µg/lane) either nontransfected (Lane 1) or transiently transfected with the PRDX6 gene (Lane 2).

Please check the [product details page](#) for more images. Overall 4 images are available for ABIN389471.