

Datasheet for ABIN389475
anti-GSTO1 antibody (AA 126-155)[Go to Product page](#)

5 Images

Overview

Quantity:	400 µL
Target:	GSTO1
Binding Specificity:	AA 126-155
Reactivity:	Human
Host:	Rabbit
Clonality:	Polyclonal
Conjugate:	This GSTO1 antibody is un-conjugated
Application:	Western Blotting (WB), Immunohistochemistry (Paraffin-embedded Sections) (IHC (p)), Flow Cytometry (FACS)

Product Details

Immunogen:	This GSTO1 antibody is generated from rabbits immunized with a KLH conjugated synthetic peptide between 126-155 amino acids from the Central region of human GSTO1.
Clone:	RB20732
Isotype:	Ig Fraction
Purification:	This antibody is prepared by Saturated Ammonium Sulfate (SAS) precipitation followed by dialysis against PBS.

Target Details

Target:	GSTO1
Alternative Name:	GSTO1 (GSTO1 Products)

Target Details

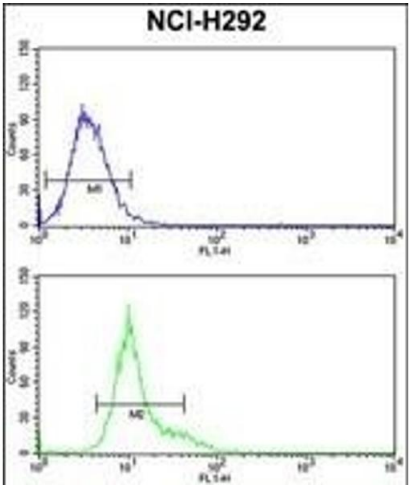
Background:	GSTO1 is a member of the theta class glutathione S-transferase-like (GSTTL) protein family. In mouse, this protein acts as a small stress response protein, likely involved in cellular redox homeostasis.
Molecular Weight:	27566
Gene ID:	9446
NCBI Accession:	NP_001177931 , NP_001177932 , NP_004823
UniProt:	P78417
Pathways:	Myometrial Relaxation and Contraction , Negative Regulation of Transporter Activity

Application Details

Application Notes:	WB: 1:1000. WB: 1:1000. WB: 1:1000. IHC-P: 1:50~100. FC: 1:10~50
Restrictions:	For Research Use only

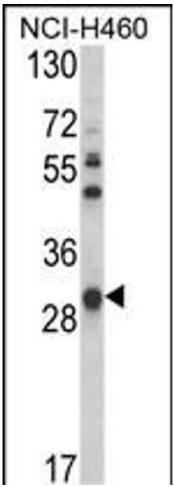
Handling

Format:	Liquid
Buffer:	Purified polyclonal antibody supplied in PBS with 0.09 % (W/V) sodium azide.
Preservative:	Sodium azide
Precaution of Use:	This product contains Sodium azide: a POISONOUS AND HAZARDOUS SUBSTANCE which should be handled by trained staff only.
Storage:	4 °C,-20 °C
Storage Comment:	Maintain refrigerated at 2-8 °C for up to 6 months. For long term storage store at -20 °C in small aliquots to prevent freeze-thaw cycles.
Expiry Date:	6 months



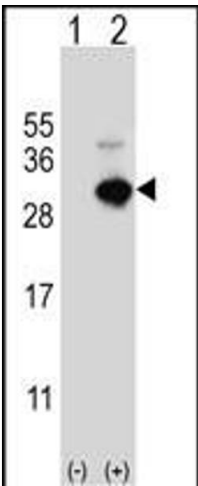
Flow Cytometry

Image 1. GSTO1 Antibody (Center) (ABIN389475 and ABIN2839537) flow cytometry analysis of NCI- cells (bottom histogram) compared to a negative control cell (top histogram).FITC-conjugated goat-anti-rabbit secondary antibodies were used for the analysis.



Western Blotting

Image 2. Western blot analysis of GSTO1 Antibody (Center) (ABIN389475 and ABIN2839537) in NCI- cell line lysates (35 µg/lane). GSTO1 (arrow) was detected using the purified Pab.



Western Blotting

Image 3. Western blot analysis of GSTO1 (arrow) using rabbit polyclonal GSTO1 Antibody (Center) (ABIN389475 and ABIN2839537). 293 cell lysates (2 µg/lane) either nontransfected (Lane 1) or transiently transfected (Lane 2) with the GSTO1 gene.

Please check the [product details page](#) for more images. Overall 5 images are available for ABIN389475.