

Datasheet for ABIN389476  
**anti-IMMT antibody (C-Term)**[Go to Product page](#)

## 4 Images

## Overview

Quantity:	400 µL
Target:	IMMT
Binding Specificity:	AA 700-729, C-Term
Reactivity:	Human
Host:	Rabbit
Clonality:	Polyclonal
Conjugate:	This IMMT antibody is un-conjugated
Application:	Western Blotting (WB), Flow Cytometry (FACS), Immunohistochemistry (Paraffin-embedded Sections) (IHC (p))

## Product Details

Immunogen:	This IMMT antibody is generated from rabbits immunized with a KLH conjugated synthetic peptide between 700-729 amino acids from the C-terminal region of human IMMT.
Clone:	RB20816
Isotype:	Ig Fraction
Predicted Reactivity:	M
Purification:	This antibody is prepared by Saturated Ammonium Sulfate (SAS) precipitation followed by dialysis against PBS.

## Target Details

Target:	IMMT
---------	------

## Target Details

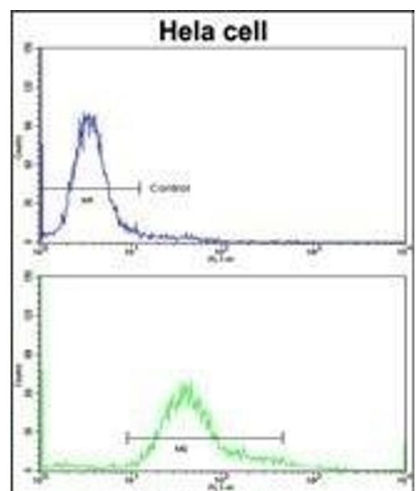
Alternative Name:	IMMT ( <a href="#">IMMT Products</a> )
Background:	Mitochondria are the center of cellular energy production and essential metabolic reactions. As double membrane-bound organelles, mitochondria from different species, tissues, and metabolic states are highly polymorphic in nature, yet exhibit common structural features. The ultrastructural variations in mitochondrial architecture occur mainly due to the differences in the amount and shape of cristae. Abundant cristae are found in mitochondria from tissues where energy demand is high. Analysis of the human heart mitochondrial proteome shows that mitofilin is one of the most abundant mitochondrial proteins. It appears to play an important role in the maintenance of cristae morphology.
Molecular Weight:	83678
Gene ID:	10989
NCBI Accession:	<a href="#">NP_001093639</a> , <a href="#">NP_001093640</a> , <a href="#">NP_006830</a>
UniProt:	<a href="#">Q16891</a>

## Application Details

Application Notes:	WB: 1:1000. WB: 1:1000. IHC-P: 1:50~100. FC: 1:10~50
Restrictions:	For Research Use only

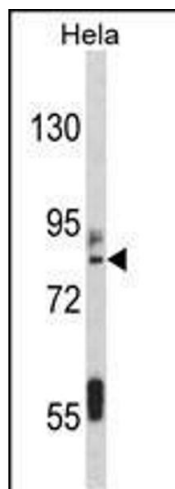
## Handling

Format:	Liquid
Buffer:	Purified polyclonal antibody supplied in PBS with 0.09 % (W/V) sodium azide.
Preservative:	Sodium azide
Precaution of Use:	This product contains Sodium azide: a POISONOUS AND HAZARDOUS SUBSTANCE which should be handled by trained staff only.
Storage:	4 °C, -20 °C
Storage Comment:	Maintain refrigerated at 2-8 °C for up to 6 months. For long term storage store at -20 °C in small aliquots to prevent freeze-thaw cycles.
Expiry Date:	6 months



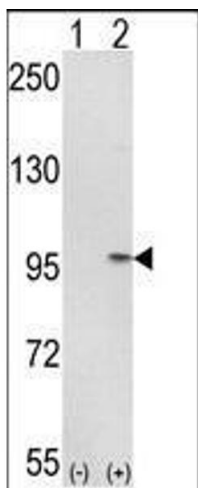
Flow Cytometry

**Image 1.** Flow cytometric analysis of hela cells using IT Antibody (C-term)(bottom histogram) compared to a negative control cell (top histogram)FITC-conjugated goat-anti-rabbit secondary antibodies were used for the analysis.



Western Blotting

**Image 2.** Western blot analysis of IT Antibody (C-term) (ABIN389476 and ABIN2839538) in HeLa cell line lysates (35 µg/lane). IT (arrow) was detected using the purified Pab.



Western Blotting

**Image 3.** Western blot analysis of IT (arrow) using rabbit polyclonal IT Antibody (C-term) (ABIN389476 and ABIN2839538). 293 cell lysates (2 µg/lane) either nontransfected (Lane 1) or transiently transfected with the IT gene (Lane 2).

Please check the [product details page](#) for more images. Overall 4 images are available for ABIN389476.