

Datasheet for ABIN389486
anti-14-3-3 gamma antibody (AA 136-164)[Go to Product page](#)

5 Images

Overview

Quantity:	400 µL
Target:	14-3-3 gamma (YWHAG1)
Binding Specificity:	AA 136-164
Reactivity:	Human, Mouse
Host:	Rabbit
Clonality:	Polyclonal
Conjugate:	This 14-3-3 gamma antibody is un-conjugated
Application:	Western Blotting (WB), Immunohistochemistry (Paraffin-embedded Sections) (IHC (p)), Flow Cytometry (FACS)

Product Details

Immunogen:	This YWHAG antibody is generated from rabbits immunized with a KLH conjugated synthetic peptide between 136-164 amino acids from the Central region of human YWHAG.
Clone:	RB20871
Isotype:	Ig Fraction
Predicted Reactivity:	B, C, Rat, Sh, X
Purification:	This antibody is prepared by Saturated Ammonium Sulfate (SAS) precipitation followed by dialysis against PBS.

Target Details

Target:	14-3-3 gamma (YWHAG1)
---------	-----------------------

Target Details

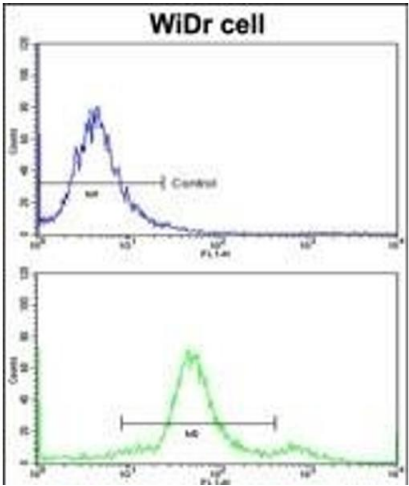
Alternative Name:	YWHAG (YWHAG1 Products)
Background:	YWHAG belongs to the 14-3-3 family of proteins which mediate signal transduction by binding to phosphoserine-containing proteins. This highly conserved protein family is found in both plants and mammals, and this protein is 100 % identical to the rat ortholog. It is induced by growth factors in human vascular smooth muscle cells, and is also highly expressed in skeletal and heart muscles, suggesting an important role for this protein in muscle tissue. It has been shown to interact with RAF1 and protein kinase C, proteins involved in various signal transduction pathways.
Molecular Weight:	28303
Gene ID:	7532
NCBI Accession:	NP_036611
UniProt:	P61981
Pathways:	Myometrial Relaxation and Contraction, M Phase

Application Details

Application Notes:	WB: 1:1000. WB: 1:1000. WB: 1:1000. IHC-P: 1:50~100. FC: 1:10~50
Restrictions:	For Research Use only

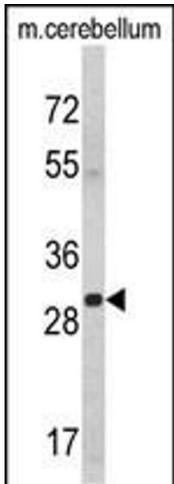
Handling

Format:	Liquid
Buffer:	Purified polyclonal antibody supplied in PBS with 0.09 % (W/V) sodium azide.
Preservative:	Sodium azide
Precaution of Use:	This product contains Sodium azide: a POISONOUS AND HAZARDOUS SUBSTANCE which should be handled by trained staff only.
Storage:	4 °C, -20 °C
Storage Comment:	Maintain refrigerated at 2-8 °C for up to 6 months. For long term storage store at -20 °C in small aliquots to prevent freeze-thaw cycles.
Expiry Date:	6 months



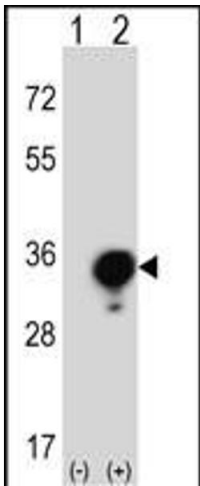
Flow Cytometry

Image 1. Flow cytometric analysis of widr cells using YWHAG Antibody (Center)(bottom histogram) compared to a negative control cell (top histogram)FITC-conjugated goat-anti-rabbit secondary antibodies were used for the analysis.



Western Blotting

Image 2. Western blot analysis of YWHAG Antibody (Center) (ABIN389486 and ABIN2839545) in mouse cerebellum tissue lysates (35 µg/lane). YWHAG (arrow) was detected using the purified Pab.



Western Blotting

Image 3. Western blot analysis of YWHAG (arrow) using rabbit polyclonal YWHAG Antibody (Center) (ABIN389486 and ABIN2839545). 293 cell lysates (2 µg/lane) either nontransfected (Lane 1) or transiently transfected (Lane 2) with the YWHAG gene.

Please check the [product details page](#) for more images. Overall 5 images are available for ABIN389486.