



[Go to Product page](#)

Datasheet for ABIN389492

anti-Paired Box 3 antibody (N-Term)

3 Images

Overview

Quantity:	400 µL
Target:	Paired Box 3 (PAX3)
Binding Specificity:	AA 98-126, N-Term
Reactivity:	Human
Host:	Rabbit
Clonality:	Polyclonal
Conjugate:	This Paired Box 3 antibody is un-conjugated
Application:	Western Blotting (WB), Immunohistochemistry (Paraffin-embedded Sections) (IHC (p)), Flow Cytometry (FACS)

Product Details

Immunogen:	This PAX3 antibody is generated from rabbits immunized with a KLH conjugated synthetic peptide between 98-126 amino acids from the N-terminal region of human PAX3.
Clone:	RB21101
Isotype:	Ig Fraction
Predicted Reactivity:	M
Purification:	This antibody is purified through a protein A column, followed by peptide affinity purification.

Target Details

Target:	Paired Box 3 (PAX3)
---------	---------------------

Target Details

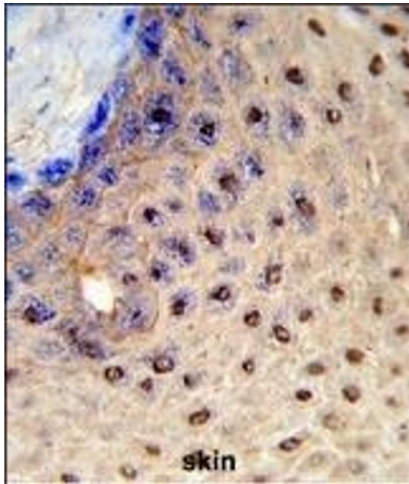
Alternative Name:	PAX3 (PAX3 Products)
Background:	PAX3 probable is a transcription factor associated with development of alveolar rhabdomyosarcoma.
Molecular Weight:	52968
Gene ID:	5077
NCBI Accession:	NP_000429 , NP_001120838 , NP_039230 , NP_852122 , NP_852123 , NP_852124 , NP_852125 , NP_852126
UniProt:	P23760
Pathways:	Sensory Perception of Sound , Tube Formation

Application Details

Application Notes:	WB: 1:1000. IHC-P: 1:50~100. FC: 1:10~50
Restrictions:	For Research Use only

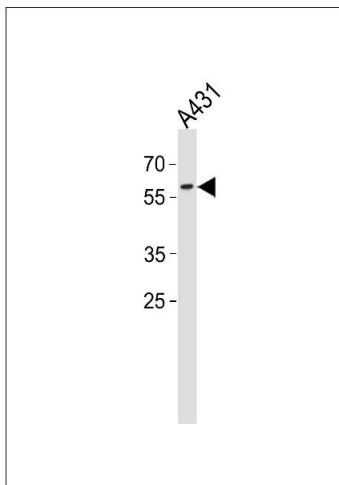
Handling

Format:	Liquid
Buffer:	Purified polyclonal antibody supplied in PBS with 0.09 % (W/V) sodium azide.
Preservative:	Sodium azide
Precaution of Use:	This product contains Sodium azide: a POISONOUS AND HAZARDOUS SUBSTANCE which should be handled by trained staff only.
Storage:	4 °C,-20 °C
Storage Comment:	Maintain refrigerated at 2-8 °C for up to 6 months. For long term storage store at -20 °C in small aliquots to prevent freeze-thaw cycles.
Expiry Date:	6 months



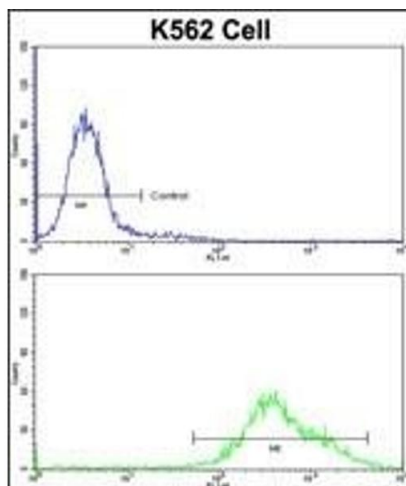
Immunohistochemistry (Paraffin-embedded Sections)

Image 1. Formalin-fixed and paraffin-embedded human skin reacted with X3 Antibody (N-term), which was peroxidase-conjugated to the secondary antibody, followed by DAB staining. This data demonstrates the use of this antibody for immunohistochemistry, clinical relevance has not been evaluated.



Western Blotting

Image 2. X3 Antibody (N-term) (ABIN389492 and ABIN2839548) western blot analysis in A431 cell line lysates (35 µg/lane). This demonstrates the X3 antibody detected the X3 protein (arrow).



Flow Cytometry

Image 3. Flow cytometric analysis of K562 cells using X3 Antibody (N-term) (bottom histogram) compared to a negative control cell (top histogram). FITC-conjugated goat-anti-rabbit secondary antibodies were used for the analysis.