

Datasheet for ABIN389493
anti-Klotho antibody (C-Term)[Go to Product page](#)

2 Images

1 Publication

Overview

Quantity:	400 µL
Target:	Klotho (KL)
Binding Specificity:	AA 986-1012, C-Term
Reactivity:	Human
Host:	Rabbit
Clonality:	Polyclonal
Conjugate:	This Klotho antibody is un-conjugated
Application:	Western Blotting (WB), Flow Cytometry (FACS)

Product Details

Immunogen:	This Klotho antibody is generated from rabbits immunized with a KLH conjugated synthetic peptide between 986-1012 AA from the C-terminal region of human Klotho.
Clone:	RB21226
Isotype:	Ig Fraction
Specificity:	This Klotho antibody is generated from rabbits immunized with a KLH conjugated synthetic peptide between 983~1012 amino acids from the C-terminal region of human Klotho.
Purification:	This antibody is purified through a protein A column, followed by peptide affinity purification.

Target Details

Target:	Klotho (KL)
---------	-------------

Target Details

Alternative Name:	Klotho (KL Products)
Background:	<p>Klotho is a type-I membrane protein that is related to beta-glucosidases. Reduced production of this protein has been observed in patients with chronic renal failure (CRF), and this may be one of the factors underlying the degenerative processes (e.g., arteriosclerosis, osteoporosis, and skin atrophy) seen in CRF. Also, mutations within this protein have been associated with ageing and bone loss.</p> <p>Synonyms: Klotho, Klotho peptide, KL</p>
Molecular Weight:	116181 DA
Gene ID:	9365
UniProt:	Q9UEF7
Pathways:	Fc-epsilon Receptor Signaling Pathway , EGFR Signaling Pathway , Neurotrophin Signaling Pathway , Hormone Activity , Growth Factor Binding

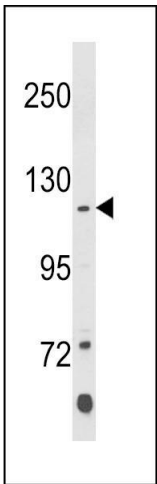
Application Details

Application Notes:	WB = 1:1000, FACS = 1:10-50
Restrictions:	For Research Use only

Handling

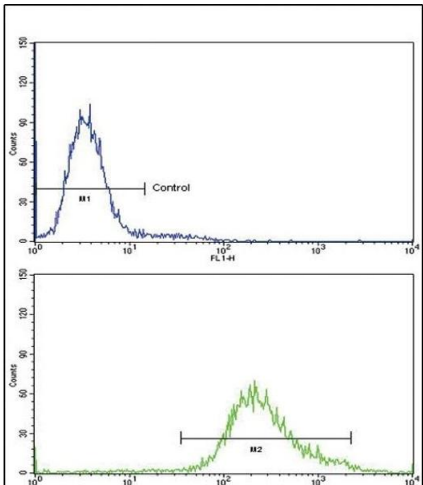
Format:	Liquid
Concentration:	0.5 mg/mL
Buffer:	PBS with 0.09 % (W/V) sodium azide
Preservative:	Sodium azide
Precaution of Use:	This product contains sodium azide: a POISONOUS AND HAZARDOUS SUBSTANCE which should be handled by trained staff only.
Storage:	4 °C/-20 °C
Storage Comment:	Maintain refrigerated at 2-8 °C for up to 6 months. For long term storage store at -20 °C in small aliquots to prevent freeze-thaw cycles.
Expiry Date:	6 months

Product cited in: Kevin Li-Chun, Schob, Zeller, Pulli, Ali, Wang, Chiou, Tsang, Lee, Stossel, Chen: "Gelsolin decreases actin toxicity and inflammation in murine multiple sclerosis." in: **Journal of neuroimmunology**, Vol. 287, pp. 36-42, (2015) ([PubMed](#)).



Western Blotting

Image 1. Western blot analysis of Klotho Antibody (C-term) in K562 cell line lysates (35 µg/lane). Klotho (arrow) was detected using the purified Pab.



Flow Cytometry

Image 2. Flow cytometric analysis of K562 cells using Klotho Antibody (C-term)(bottom histogram) compared to a negative control cell (top histogram)FITC-conjugated goat-anti-rabbit secondary antibodies were used for the analysis.