



[Go to Product page](#)

Datasheet for ABIN389534

## anti-CDC25B antibody (pSer187)

### 2 Images

#### Overview

Quantity:	400 µL
Target:	CDC25B
Binding Specificity:	pSer187
Reactivity:	Human
Host:	Rabbit
Clonality:	Polyclonal
Conjugate:	This CDC25B antibody is un-conjugated
Application:	Western Blotting (WB), Immunohistochemistry (Paraffin-embedded Sections) (IHC (p))

#### Product Details

Immunogen:	This CDC25B Antibody is generated from rabbits immunized with a KLH conjugated synthetic phosphopeptide corresponding to amino acid residues surrounding S187 of human CDC25B.
Clone:	RB26741
Isotype:	Ig Fraction
Purification:	This antibody is purified through a protein A column, followed by peptide affinity purification.

#### Target Details

Target:	CDC25B
Alternative Name:	CDC25B ( <a href="#">CDC25B Products</a> )
Background:	CDC25B is a member of the CDC25 family of phosphatases. CDC25B activates the cyclin

## Target Details

---

dependent kinase CDC2 by removing two phosphate groups and it is required for entry into mitosis. CDC25B shuttles between the nucleus and the cytoplasm due to nuclear localization and nuclear export signals. The protein is nuclear in the M and G1 phases of the cell cycle and moves to the cytoplasm during S and G2. CDC25B has oncogenic properties, although its role in tumor formation has not been determined. Multiple transcript variants for this gene exist.

Molecular Weight:	64987
Gene ID:	994
NCBI Accession:	<a href="#">NP_004349</a> , <a href="#">NP_068658</a> , <a href="#">NP_068659</a>
UniProt:	<a href="#">P30305</a>
Pathways:	<a href="#">Cell Division Cycle</a> , <a href="#">M Phase</a> , <a href="#">Autophagy</a>

## Application Details

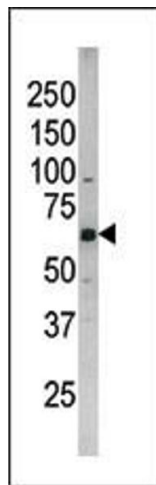
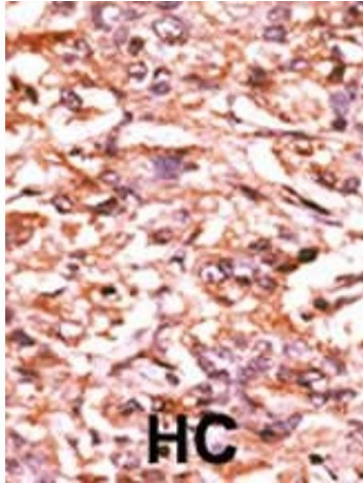
---

Application Notes:	WB: 1:1000. IHC-P: 1:50~100. IHC-P: 1:50~100
Restrictions:	For Research Use only

## Handling

---

Format:	Liquid
Buffer:	Purified polyclonal antibody supplied in PBS with 0.09 % (W/V) sodium azide.
Preservative:	Sodium azide
Precaution of Use:	This product contains Sodium azide: a POISONOUS AND HAZARDOUS SUBSTANCE which should be handled by trained staff only.
Storage:	4 °C, -20 °C
Storage Comment:	Maintain refrigerated at 2-8 °C for up to 6 months. For long term storage store at -20 °C in small aliquots to prevent freeze-thaw cycles.
Expiry Date:	6 months



### Immunohistochemistry (Paraffin-embedded Sections)

**Image 1.** Formalin-fixed and paraffin-embedded human cancer tissue reacted with the primary antibody, which was peroxidase-conjugated to the secondary antibody, followed by AEC staining. This data demonstrates the use of this antibody for immunohistochemistry, clinical relevance has not been evaluated. BC = breast carcinoma, HC = hepatocarcinoma.

### Western Blotting

**Image 2.** The anti-Phospho-CDC25B- Pab (ABIN389534 and ABIN2839581) is used in Western blot to detect Phospho-CDC25B- in SK-BR-3 tissue lysate