

Datasheet for ABIN389547

**anti-CREB1 antibody (pSer133)**

5 Images

1 Publication

[Go to Product page](#)

## Overview

Quantity:	400 µL
Target:	CREB1
Binding Specificity:	pSer133
Reactivity:	Human
Host:	Rabbit
Clonality:	Polyclonal
Conjugate:	This CREB1 antibody is un-conjugated
Application:	Western Blotting (WB), Immunofluorescence (IF), Immunohistochemistry (Paraffin-embedded Sections) (IHC (p))

## Product Details

Immunogen:	This CREB Antibody is generated from rabbits immunized with a KLH conjugated synthetic phosphopeptide corresponding to amino acid residues surrounding S133 of human CREB.
Clone:	RB05198
Isotype:	Ig Fraction
Purification:	This antibody is purified through a protein A column, followed by peptide affinity purification.

## Target Details

Target:	CREB1
Alternative Name:	CREB ( <a href="#">CREB1 Products</a> )

## Target Details

Background:	CREB is a transcription factor that is a member of the leucine zipper family of DNA binding proteins. This protein binds as a homodimer to the cAMP-responsive element, (CRE), a sequence present in many viral and cellular promoters. The protein is phosphorylated by several protein kinases, and induces transcription of genes in response to hormonal stimulation of the cAMP pathway.
Molecular Weight:	35136
Gene ID:	1385
NCBI Accession:	<a href="#">NP_004370</a> , <a href="#">NP_604391</a>
UniProt:	<a href="#">P16220</a>
Pathways:	<a href="#">TLR Signaling</a> , <a href="#">Fc-epsilon Receptor Signaling Pathway</a> , <a href="#">EGFR Signaling Pathway</a> , <a href="#">Neurotrophin Signaling Pathway</a> , <a href="#">Thyroid Hormone Synthesis</a> , <a href="#">Activation of Innate immune Response</a> , <a href="#">Myometrial Relaxation and Contraction</a> , <a href="#">Regulation of Cell Size</a> , <a href="#">Toll-Like Receptors Cascades</a> , <a href="#">G-protein mediated Events</a> , <a href="#">Interaction of EGFR with phospholipase C-gamma</a> , <a href="#">Positive Regulation of fat Cell Differentiation</a>

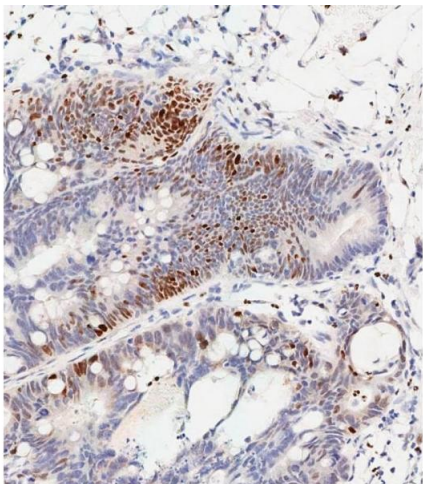
## Application Details

Application Notes:	WB: 1:500. WB: 1:500. WB: 1:500. IHC-P-Leica: 1:500. IHC-P-Leica: 1:500
Restrictions:	For Research Use only

## Handling

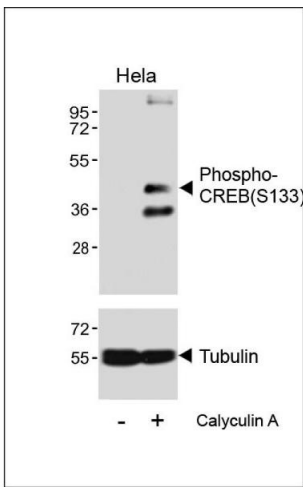
Format:	Liquid
Buffer:	Purified polyclonal antibody supplied in PBS with 0.09 % (W/V) sodium azide.
Preservative:	Sodium azide
Precaution of Use:	This product contains Sodium azide: a POISONOUS AND HAZARDOUS SUBSTANCE which should be handled by trained staff only.
Storage:	4 °C,-20 °C
Storage Comment:	Maintain refrigerated at 2-8 °C for up to 6 months. For long term storage store at -20 °C in small aliquots to prevent freeze-thaw cycles.
Expiry Date:	6 months

Product cited in: Lei, Chen, Huang, Wu, Lin, Lai: "Proteomic analysis of the effect of extracellular calcium ions on human mesenchymal stem cells: Implications for bone tissue engineering." in: **Chemico-biological interactions**, Vol. 233, pp. 139-46, (2015) ([PubMed](#)).



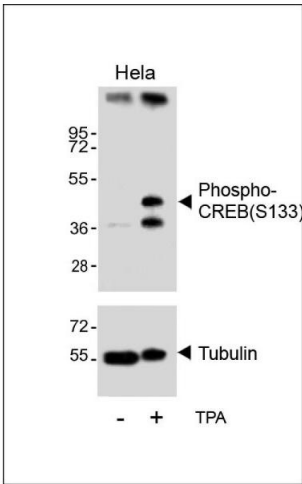
**Immunohistochemistry (Paraffin-embedded Sections)**

**Image 1.** Immunohistochemical analysis of paraffin-embedded Human colon carcinoma tissue using (ABIN389547 and ABIN2839591) performed on the Leica® BOND RXm. Tissue was fixed with formaldehyde at room temperature, antigen retrieval was by heat mediation with a EDTA buffer (pH 9.0). Samples were incubated with primary Antibody (1:500) for 1 hours at room temperature. A undiluted biotinylated CRF Anti-Polyvalent HRP Polymer antibody was used as the secondary antibody.



**Western Blotting**

**Image 2.** Western blot analysis of lysates from HeLa cell line, untreated or treated with 20 % FBS + 100nM Calyculin A, using Phospho-CREB Antibody (upper) or tubulin(lower).



### Western Blotting

**Image 3.** Western blot analysis of lysates from Hela cell line, untreated or treated with T, 200nM, using Phospho-CREB Antibody (upper) or tubulin(lower).

Please check the [product details page](#) for more images. Overall 5 images are available for ABIN389547.