

Datasheet for ABIN389572

anti-ERBB4 antibody (pTyr1162)

3 Images

2 Publications

[Go to Product page](#)

Overview

Quantity:	400 µL
Target:	ERBB4
Binding Specificity:	pTyr1162
Reactivity:	Human
Host:	Rabbit
Clonality:	Polyclonal
Conjugate:	This ERBB4 antibody is un-conjugated
Application:	Western Blotting (WB), Immunohistochemistry (Paraffin-embedded Sections) (IHC (p)), Immunofluorescence (IF)

Product Details

Immunogen:	This HER4 Antibody is generated from rabbits immunized with a KLH conjugated synthetic phosphopeptide corresponding to amino acid residues surrounding Y1162 of human HER4.
Clone:	RB5687
Isotype:	Ig Fraction
Predicted Reactivity:	M, Rat
Purification:	This antibody is purified through a protein A column, followed by peptide affinity purification.

Target Details

Target:	ERBB4
---------	-------

Target Details

Alternative Name:	HER4 (ERBB4 Products)
Background:	HER4/ERBB4 is a member of the type I receptor tyrosine kinase subfamily that includes EGFR, ERBB2 and ERBB3. It is a receptor for NDF/heregulin.
Molecular Weight:	146808
Gene ID:	2066
NCBI Accession:	NP_001036064 , NP_005226
UniProt:	Q15303
Pathways:	RTK Signaling , Fc-epsilon Receptor Signaling Pathway , EGFR Signaling Pathway , Neurotrophin Signaling Pathway

Application Details

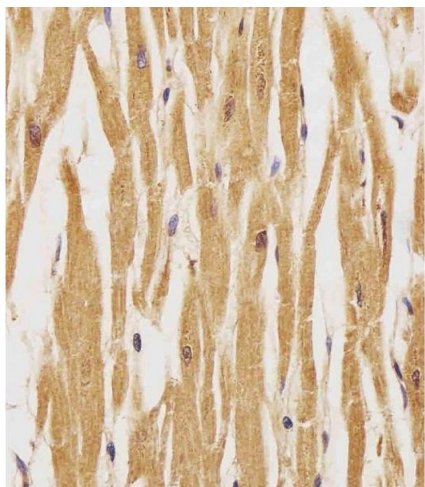
Application Notes:	IF: 1:10~50. WB: 1:500. IHC-P: 1:25
Restrictions:	For Research Use only

Handling

Format:	Liquid
Buffer:	Purified polyclonal antibody supplied in PBS with 0.09 % (W/V) sodium azide.
Preservative:	Sodium azide
Precaution of Use:	This product contains Sodium azide: a POISONOUS AND HAZARDOUS SUBSTANCE which should be handled by trained staff only.
Storage:	4 °C, -20 °C
Storage Comment:	Maintain refrigerated at 2-8 °C for up to 6 months. For long term storage store at -20 °C in small aliquots to prevent freeze-thaw cycles.
Expiry Date:	6 months

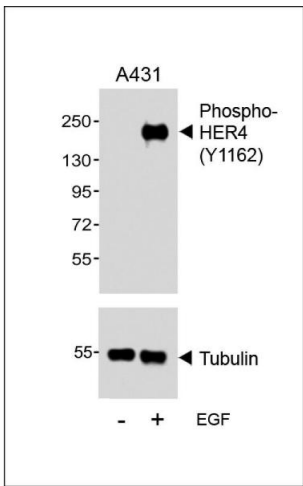
Publications

Product cited in:	Sharma, Åkerström, Sharma, Chow, Teow, Abrenica, Booth, Booth, Mirazimi, Lal: "SARS-CoV 9b protein diffuses into nucleus, undergoes active Crm1 mediated nucleocytoplasmic export and triggers apoptosis when retained in the nucleus." in: PLoS ONE , Vol. 6, Issue 5, pp. e19436, (2011) (PubMed).
-------------------	---



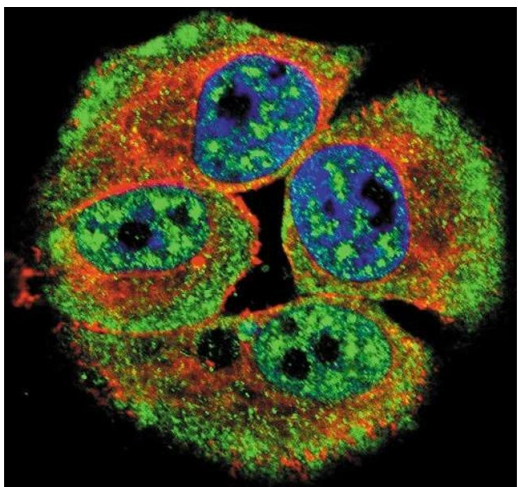
Immunohistochemistry (Paraffin-embedded Sections)

Image 1. (ABIN389572 and ABIN2839598) staining HER4 in human heart tissue sections by Immunohistochemistry (IHC-P - paraformaldehyde-fixed, paraffin-embedded sections). Tissue was fixed with formaldehyde and blocked with 3 % BSA for 0.5 hour at room temperature, antigen retrieval was by heat mediation with a citrate buffer (pH 6). Samples were incubated with primary antibody (1/25) for 1 hours at 37 °C. A undiluted biotinylated goat polyvalent antibody was used as the secondary antibody.



Western Blotting

Image 2. Western blot analysis of lysates from A431 cell line, untreated or treated with EGF, 100 ng/mL, using (ABIN389572 and ABIN2839598) (upper) or Tubulin (lower).



Immunofluorescence

Image 3. Confocal immunofluorescent analysis of Phospho-HER4- Antibody (ABIN389572 and ABIN2839598) with MCF-7 cell followed by Alexa Fluor 488-conjugated goat anti-rabbit IgG (green). Actin filaments have been labeled with Alexa Fluor 555 phalloidin (red).DAPI was used to stain the cell nuclear (blue).