



Datasheet for ABIN389573  
**anti-ERBB4 antibody (pTyr1188)**



[Go to Product page](#)

3 Images

Overview

Quantity:	400 µL
Target:	ERBB4
Binding Specificity:	pTyr1188
Reactivity:	Human
Host:	Rabbit
Clonality:	Polyclonal
Conjugate:	This ERBB4 antibody is un-conjugated
Application:	Western Blotting (WB), Immunohistochemistry (Paraffin-embedded Sections) (IHC (p))

Product Details

Immunogen:	This HER4 Antibody is generated from rabbits immunized with a KLH conjugated synthetic phosphopeptide corresponding to amino acid residues surrounding Y1188 of human HER4.
Clone:	RB6051
Isotype:	Ig Fraction
Purification:	This antibody is purified through a protein A column, followed by peptide affinity purification.

Target Details

Target:	ERBB4
Alternative Name:	HER4 ( <a href="#">ERBB4 Products</a> )
Background:	The HER4/ERBB4 gene is a member of the type I receptor tyrosine kinase subfamily that

## Target Details

---

includes EGFR, ERBB2, and ERBB3. It encodes a receptor for NDF/heregulin.

Molecular Weight: 146808

Gene ID: 2066

NCBI Accession: [NP\\_001036064](#), [NP\\_005226](#)

UniProt: [Q15303](#)

Pathways: [RTK Signaling](#), [Fc-epsilon Receptor Signaling Pathway](#), [EGFR Signaling Pathway](#), [Neurotrophin Signaling Pathway](#)

## Application Details

---

Application Notes: WB: 1:1000. IHC-P: 1:100. IHC-P: 1:100

Restrictions: For Research Use only

## Handling

---

Format: Liquid

Buffer: Purified polyclonal antibody supplied in PBS with 0.09 % (W/V) sodium azide.

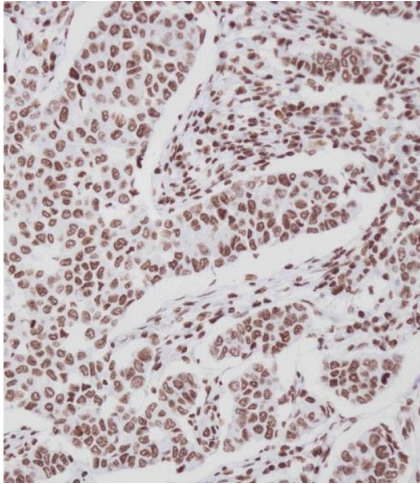
Preservative: Sodium azide

Precaution of Use: This product contains Sodium azide: a POISONOUS AND HAZARDOUS SUBSTANCE which should be handled by trained staff only.

Storage: 4 °C, -20 °C

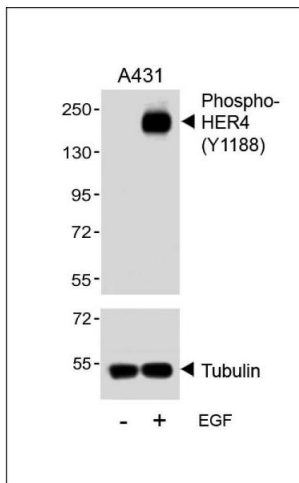
Storage Comment: Maintain refrigerated at 2-8 °C for up to 6 months. For long term storage store at -20 °C in small aliquots to prevent freeze-thaw cycles.

Expiry Date: 6 months



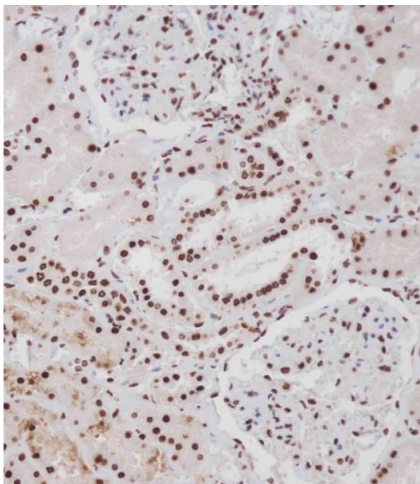
### Immunohistochemistry (Paraffin-embedded Sections)

**Image 1.** Immunohistochemical analysis of A on paraffin-embedded Human breast carcinoma tissue. Tissue was fixed with formaldehyde at room temperature. Heat induced epitope retrieval was performed by EDTA buffer (pH 9.0). Samples were incubated with primary Antibody (1:100) for 1 hour at room temperature. Undiluted CRF Anti-Polyvalent HRP Polymer antibody was used as the secondary antibody.



### Western Blotting

**Image 2.** Western blot analysis of lysates from A431 cell line, untreated or treated with EGF, 100 ng/mL, using Phospho-HER4 Antibody (upper) or tubulin (lower).



### Immunohistochemistry (Paraffin-embedded Sections)

**Image 3.** Immunohistochemical analysis of A on paraffin-embedded Human kidney tissue. Tissue was fixed with formaldehyde at room temperature. Heat induced epitope retrieval was performed by EDTA buffer (pH 9.0). Samples were incubated with primary Antibody (1:100) for 1 hour at room temperature. Undiluted CRF Anti-Polyvalent HRP Polymer antibody was used as the secondary antibody.