

Datasheet for ABIN389585

anti-MAPKAP Kinase 2 antibody (pSer272)[Go to Product page](#)**2** Images**1** Publication

Overview

Quantity:	400 µL
Target:	MAPKAP Kinase 2 (MAPKAPK2)
Binding Specificity:	pSer272
Reactivity:	Human
Host:	Rabbit
Clonality:	Polyclonal
Conjugate:	This MAPKAP Kinase 2 antibody is un-conjugated
Application:	Immunohistochemistry (Paraffin-embedded Sections) (IHC (p)), Dot Blot (DB)

Product Details

Immunogen:	This MAPKAPK2 Antibody is generated from rabbits immunized with a KLH conjugated synthetic phosphopeptide corresponding to amino acid residues surrounding S272 of human MAPKAPK2.
Clone:	RB05555
Isotype:	Ig Fraction
Predicted Reactivity:	M, Rb
Purification:	This antibody is purified through a protein A column, followed by peptide affinity purification.

Target Details

Target:	MAPKAP Kinase 2 (MAPKAPK2)
---------	----------------------------

Target Details

Alternative Name:	MAPKAPK2 (MAPKAPK2 Products)
Background:	This gene encodes a member of the Ser/Thr protein kinase family. This kinase is regulated through direct phosphorylation by p38 MAP kinase. In conjunction with p38 MAP kinase, this kinase is known to be involved in many cellular processes including stress and inflammatory responses, nuclear export, gene expression regulation and cell proliferation. Heat shock protein HSP27 was shown to be one of the substrates of this kinase in vivo. Two transcript variants encoding two different isoforms have been found for this gene.
Molecular Weight:	45568
Gene ID:	9261
NCBI Accession:	NP_004750 , NP_116584
UniProt:	P49137
Pathways:	MAPK Signaling , Neurotrophin Signaling Pathway , Activation of Innate immune Response , Toll-Like Receptors Cascades

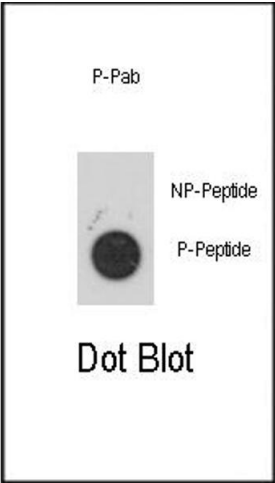
Application Details

Application Notes:	IHC-P: 1:50~100. DB: 1:500
Restrictions:	For Research Use only

Handling

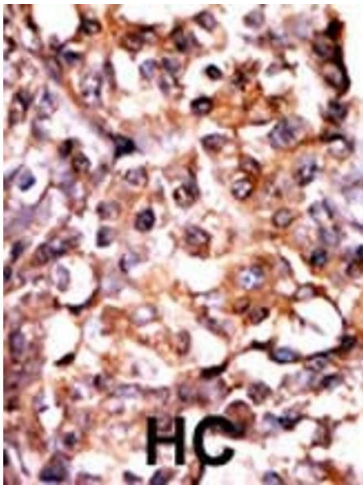
Format:	Liquid
Buffer:	Purified polyclonal antibody supplied in PBS with 0.09 % (W/V) sodium azide.
Preservative:	Sodium azide
Precaution of Use:	This product contains Sodium azide: a POISONOUS AND HAZARDOUS SUBSTANCE which should be handled by trained staff only.
Storage:	4 °C, -20 °C
Storage Comment:	Maintain refrigerated at 2-8 °C for up to 6 months. For long term storage store at -20 °C in small aliquots to prevent freeze-thaw cycles.
Expiry Date:	6 months

Product cited in: Xu, Zhou, Xiong, Zou, Deng, Ganaie, Kleiboeker, Peng, Liu, Wang, Ye, Qiu: "Parvovirus B19 NS1 protein induces cell cycle arrest at G2-phase by activating the ATR-CDC25C-CDK1 pathway." in: **PLoS pathogens**, Vol. 13, Issue 3, pp. e1006266, (2017) ([PubMed](#)).



Dot Blot

Image 1. Dot blot analysis of anti-Phospho-PKK2- Antibody 3147a on nitrocellulose membrane. 50 ng of Phospho-peptide or Non Phospho-peptide per dot were adsorbed. Antibody working concentrations are 0.5 µg per ml.



Immunohistochemistry (Paraffin-embedded Sections)

Image 2. Formalin-fixed and paraffin-embedded human cancer tissue reacted with the primary antibody, which was peroxidase-conjugated to the secondary antibody, followed by AEC staining. This data demonstrates the use of this antibody for immunohistochemistry, clinical relevance has not been evaluated. BC = breast carcinoma, HC = hepatocarcinoma.