

Datasheet for ABIN389590

anti-MEK1 antibody (pSer218, pSer222)[Go to Product page](#)**3** Images

Overview

Quantity:	400 µL
Target:	MEK1 (MAP2K1)
Binding Specificity:	pSer218, pSer222
Reactivity:	Human
Host:	Rabbit
Clonality:	Polyclonal
Conjugate:	This MEK1 antibody is un-conjugated
Application:	Western Blotting (WB), Immunohistochemistry (Paraffin-embedded Sections) (IHC (p)), Dot Blot (DB)

Product Details

Immunogen:	This MEK1 Antibody is generated from rabbits immunized with a KLH conjugated synthetic phosphopeptide corresponding to amino acid residues surrounding S218/222 of human MEK1.
Clone:	RB05985
Isotype:	Ig Fraction
Predicted Reactivity:	D, E, Ha, M, Rb, Rat, X, C
Purification:	This antibody is purified through a protein A column, followed by peptide affinity purification.

Target Details

Target:	MEK1 (MAP2K1)
---------	---------------

Target Details

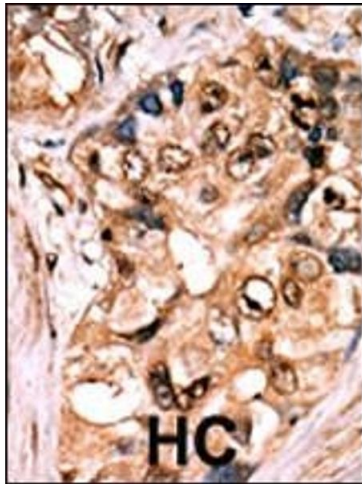
Alternative Name:	MEK1 (MAP2K1 Products)
Background:	MEK1 is a dual specificity protein kinase that belongs to the MAP kinase kinase family. This kinase is known to play a critical role in mitogen growth factor signal transduction. It phosphorylates and thus activates MAPK1/ERK2 and MAPK2/ERK3. The activation of this kinase itself is dependent on the Ser/Thr phosphorylation by MAP kinase kinase kinases. The inhibition or degradation of this kinase is found to be involved in the pathogenesis of Yersinia and anthrax.
Molecular Weight:	43439
Gene ID:	5604
NCBI Accession:	NP_002746
UniProt:	Q02750
Pathways:	MAPK Signaling , RTK Signaling , Interferon-gamma Pathway , Fc-epsilon Receptor Signaling Pathway , Neurotrophin Signaling Pathway , Activation of Innate immune Response , Toll-Like Receptors Cascades , Autophagy , Signaling of Hepatocyte Growth Factor Receptor , BCR Signaling

Application Details

Application Notes:	WB: 1:500. IHC-P: 1:50~100. DB: 1:500
Restrictions:	For Research Use only

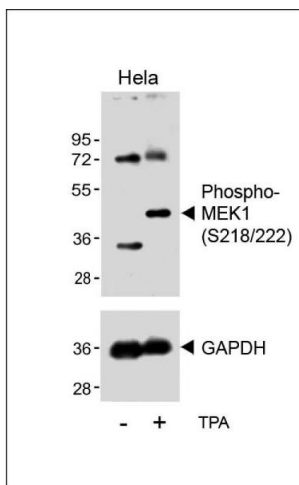
Handling

Format:	Liquid
Buffer:	Purified polyclonal antibody supplied in PBS with 0.09 % (W/V) sodium azide.
Preservative:	Sodium azide
Precaution of Use:	This product contains Sodium azide: a POISONOUS AND HAZARDOUS SUBSTANCE which should be handled by trained staff only.
Storage:	4 °C,-20 °C
Storage Comment:	Maintain refrigerated at 2-8 °C for up to 6 months. For long term storage store at -20 °C in small aliquots to prevent freeze-thaw cycles.
Expiry Date:	6 months



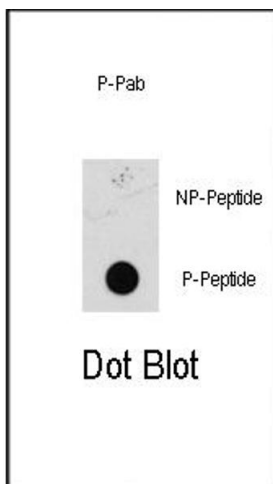
Immunohistochemistry (Paraffin-embedded Sections)

Image 1. Formalin-fixed and paraffin-embedded human cancer tissue reacted with the primary antibody, which was peroxidase-conjugated to the secondary antibody, followed by AEC staining. This data demonstrates the use of this antibody for immunohistochemistry, clinical relevance has not been evaluated. BC = breast carcinoma, HC = hepatocarcinoma.



Western Blotting

Image 2. Western blot analysis of lysates from HeLa cell line, untreated or treated with T(200nM, 30 min), using Bi-Phospho-MEK1(/222) Antibody (upper) or GAPDH (lower).



Dot Blot

Image 3. Dot blot analysis of anti-Phospho-MEK1 Pab (ABIN389590 and ABIN2839607) on nitrocellulose membrane. 50 ng of Phospho-peptide or Non Phospho-peptide per dot were adsorbed. Antibody working concentrations are 0.5 µg per ml.