



[Go to Product page](#)

Datasheet for ABIN389618
anti-p300 antibody (pSer89)

2 Images

Overview

Quantity:	400 µL
Target:	p300 (EP300)
Binding Specificity:	pSer89
Reactivity:	Human
Host:	Rabbit
Clonality:	Polyclonal
Conjugate:	This p300 antibody is un-conjugated
Application:	Dot Blot (DB), Immunohistochemistry (Paraffin-embedded Sections) (IHC (p))

Product Details

Immunogen:	This EP300 Antibody is generated from rabbits immunized with a KLH conjugated synthetic phosphopeptide corresponding to amino acid residues surrounding S89 of human EP300.
Clone:	RB7876
Isotype:	Ig Fraction
Predicted Reactivity:	M
Purification:	This antibody is purified through a protein A column, followed by peptide affinity purification.

Target Details

Target:	p300 (EP300)
Alternative Name:	EP300 (EP300 Products)

Target Details

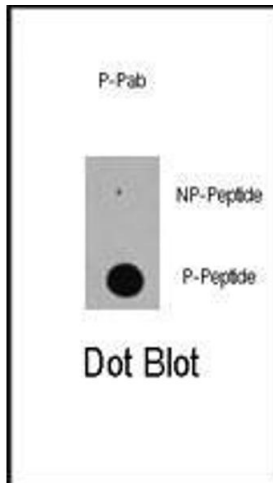
Background:	EP300 encodes the adenovirus E1A-associated cellular p300 transcriptional co-activator protein. p300 is related by sequence to CPB (CREB-binding protein [CREB: cyclic-AMP responsive element binding protein]), and like CPB can stimulate transcription through activation of CREB. This EP300 activity is specifically inhibited by the adenovirus oncoprotein E1A. EP300 has also been identified as a co-activator of HIF1A (hypoxia-inducible factor 1 alpha), and thus plays a role in the stimulation of hypoxia-induced genes such as VEGF.
Molecular Weight:	264161
Gene ID:	2033
NCBI Accession:	NP_001420
UniProt:	Q09472
Pathways:	p53 Signaling , Notch Signaling , Interferon-gamma Pathway , Intracellular Steroid Hormone Receptor Signaling Pathway , Regulation of Intracellular Steroid Hormone Receptor Signaling , Regulation of Lipid Metabolism by PPARalpha , Regulation of Muscle Cell Differentiation , Regulation of Cell Size

Application Details

Application Notes:	IHC-P: 1:50~100. DB: 1:500
Restrictions:	For Research Use only

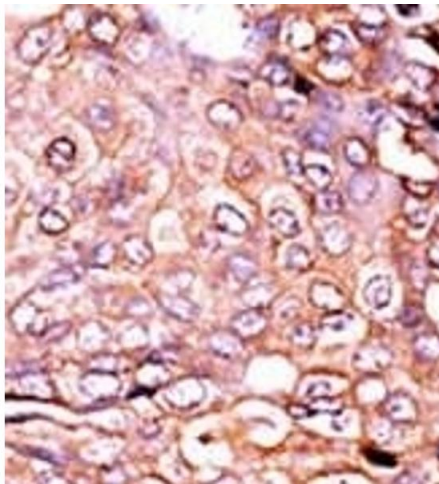
Handling

Format:	Liquid
Buffer:	Purified polyclonal antibody supplied in PBS with 0.09 % (W/V) sodium azide.
Preservative:	Sodium azide
Precaution of Use:	This product contains Sodium azide: a POISONOUS AND HAZARDOUS SUBSTANCE which should be handled by trained staff only.
Handling Advice:	Avoid freeze-thaw cycles.
Storage:	4 °C,-20 °C
Storage Comment:	Maintain refrigerated at 2-8 °C for up to 6 months. For long term storage store at -20 °C in small aliquots.
Expiry Date:	6 months



Dot Blot

Image 1. Dot blot analysis of anti-Phospho-E-S89 Pab (ABIN389618 and ABIN2839622) on nitrocellulose membrane. 50 ng of Phospho-peptide (BP3197a) or Non Phospho-peptide per dot were adsorbed. Antibodies working concentration was 0.5 µg per ml.



Immunohistochemistry (Paraffin-embedded Sections)

Image 2. Formalin-fixed and paraffin-embedded human cancer tissue reacted with the primary antibody, which was peroxidase-conjugated to the secondary antibody, followed by AEC staining. This data demonstrates the use of this antibody for immunohistochemistry, clinical relevance has not been evaluated. BC = breast carcinoma, HC = hepatocarcinoma.