

Datasheet for ABIN389654

**anti-Separase antibody (pSer1126)****2** Images**1** Publication[Go to Product page](#)

## Overview

Quantity:	400 µL
Target:	Separase (ESPL1)
Binding Specificity:	pSer1126
Reactivity:	Human
Host:	Rabbit
Clonality:	Polyclonal
Conjugate:	This Separase antibody is un-conjugated
Application:	Immunohistochemistry (Paraffin-embedded Sections) (IHC (p)), Dot Blot (DB)

## Product Details

Immunogen:	This SEPARIN Antibody is generated from rabbits immunized with a KLH conjugated synthetic phosphopeptide corresponding to amino acid residues surrounding S1126 of human SEPARIN.
Clone:	RB7943
Isotype:	Ig Fraction
Purification:	This antibody is purified through a protein A column, followed by peptide affinity purification.

## Target Details

Target:	Separase (ESPL1)
Alternative Name:	SEPARIN ( <a href="#">ESPL1 Products</a> )
Background:	The metaphase-to-anaphase transition is the final discrete event in duplication and separation

## Target Details

of the genetic material of the cell. Its timing is regulated by the activation of the anaphase-promoting complex (APC). In both budding and fission yeast, the degradation of the Pds1 or Cut2 protein, respectively, is required for the onset of sister chromatid separation. Both proteins are APC substrates. Pds1 and Cut2 proteins associate with the yeast separin proteins Esp1 and Cut1, respectively, and prevent the separins from promoting chromatid separation. Pds1 and Cut2 are also called anaphase inhibitors or securins

Molecular Weight: 233175

Gene ID: 9700

NCBI Accession: [NP\\_036423](#)

UniProt: [Q14674](#)

## Application Details

Application Notes: IHC-P: 1:50~100. DB: 1:500

Restrictions: For Research Use only

## Handling

Format: Liquid

Buffer: Purified polyclonal antibody supplied in PBS with 0.09 % (W/V) sodium azide.

Preservative: Sodium azide

Precaution of Use: This product contains Sodium azide: a POISONOUS AND HAZARDOUS SUBSTANCE which should be handled by trained staff only.

Storage: 4 °C, -20 °C

Storage Comment: Maintain refrigerated at 2-8 °C for up to 6 months. For long term storage store at -20 °C in small aliquots to prevent freeze-thaw cycles.

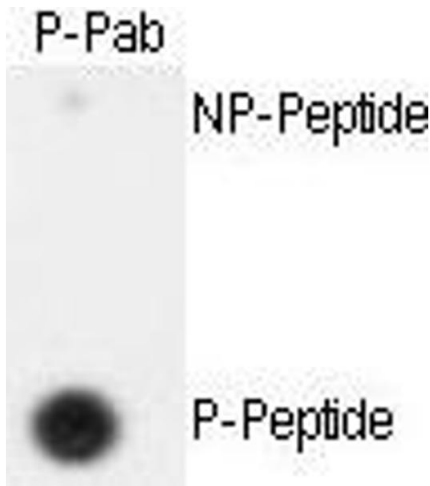
Expiry Date: 6 months

## Publications

Product cited in: Bannon, Johnson, Michelhaugh, Hartley, Halter, David, Kapatos, Schmidt: "A molecular profile of cocaine abuse includes the differential expression of genes that regulate transcription, chromatin, and dopamine cell phenotype." in: **Neuropsychopharmacology : official publication of the American College of Neuropsychopharmacology**, Vol. 39, Issue 9, pp. 2191-9, (2014) (

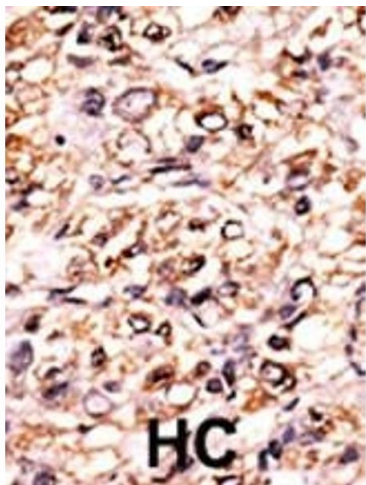
[PubMed](#)).

Images



Dot Blot

**Image 1.** Dot blot analysis of anti-hSeparase- Phospho-specific Pab (ABIN389654 and ABIN2839639) on nitrocellulose membrane. 50 ng of nonphospho-peptide or phospho-peptide were adsorbed on their respective dots. Antibody working concentration was 0.5 µg per ml.



Immunohistochemistry (Paraffin-embedded Sections)

**Image 2.** Formalin-fixed and paraffin-embedded human cancer tissue reacted with the primary antibody, which was peroxidase-conjugated to the secondary antibody, followed by DAB staining. This data demonstrates the use of this antibody for immunohistochemistry, clinical relevance has not been evaluated. BC = breast carcinoma, HC = hepatocarcinoma.