

Datasheet for ABIN389667

**anti-STAT5A antibody (pSer726)****3** Images[Go to Product page](#)

## Overview

Quantity:	400 µL
Target:	STAT5A
Binding Specificity:	pSer726
Reactivity:	Human
Host:	Rabbit
Clonality:	Polyclonal
Conjugate:	This STAT5A antibody is un-conjugated
Application:	Western Blotting (WB), Immunohistochemistry (Paraffin-embedded Sections) (IHC (p)), Dot Blot (DB)

## Product Details

Immunogen:	This STAT5a Antibody is generated from rabbits immunized with a KLH conjugated synthetic phosphopeptide corresponding to amino acid residues surrounding S726 of human STAT5a.
Clone:	RB5945
Isotype:	Ig Fraction
Predicted Reactivity:	B, Pig, Sh
Purification:	This antibody is purified through a protein A column, followed by peptide affinity purification.

## Target Details

Target:	STAT5A
---------	--------

## Target Details

Alternative Name:	STAT5a ( <a href="#">STAT5A Products</a> )
Background:	STAT5a is a member of the STAT family of transcription factors. In response to cytokines and growth factors, STAT family members are phosphorylated by the receptor associated kinases, and then form homo- or heterodimers that translocate to the cell nucleus where they act as transcription activators. This protein is activated by, and mediates the responses of many cell ligands, such as IL2, IL3, IL7 GM-CSF, erythropoietin, thrombopoietin, and different growth hormones. Activation of this protein in myeloma and lymphoma associated with a TEL/JAK2 gene fusion is independent of cell stimulus and has been shown to be essential for the tumorigenesis. The mouse counterpart of this protein is found to induce the expression of BCL2L1/BCL-X(L), which suggests the antiapoptotic function of this protein in cells.
Molecular Weight:	90647
Gene ID:	6776
NCBI Accession:	<a href="#">NP_003143</a>
UniProt:	<a href="#">P42229</a>
Pathways:	<a href="#">JAK-STAT Signaling</a> , <a href="#">RTK Signaling</a> , <a href="#">Response to Growth Hormone Stimulus</a> , <a href="#">C21-Steroid Hormone Metabolic Process</a> , <a href="#">Regulation of Leukocyte Mediated Immunity</a> , <a href="#">Positive Regulation of Immune Effector Process</a> , <a href="#">CXCR4-mediated Signaling Events</a> , <a href="#">Activated T Cell Proliferation</a>

## Application Details

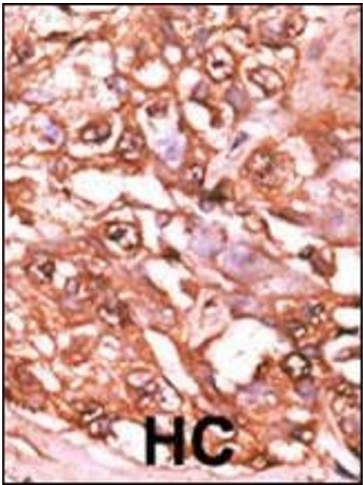
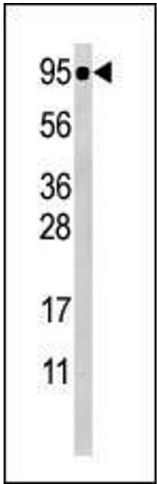
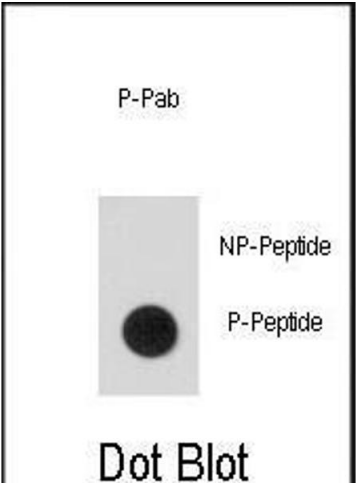
Application Notes:	WB: 1:1000. IHC-P: 1:50~100. DB: 1:500
Restrictions:	For Research Use only

## Handling

Format:	Liquid
Buffer:	Purified polyclonal antibody supplied in PBS with 0.09 % (W/V) sodium azide.
Preservative:	Sodium azide
Precaution of Use:	This product contains Sodium azide: a POISONOUS AND HAZARDOUS SUBSTANCE which should be handled by trained staff only.
Storage:	4 °C,-20 °C
Storage Comment:	Maintain refrigerated at 2-8 °C for up to 6 months. For long term storage store at -20 °C in small aliquots to prevent freeze-thaw cycles.

Expiry Date: 6 months

Images



Dot Blot

**Image 1.** Dot blot analysis of anti-Phospho-hSTAT5a-p Phospho-specific Antibody (ABIN389667 and ABIN2839646) on nitrocellulose membrane. 50 ng of Phospho-peptide or Non Phospho-peptide per dot were adsorbed. Antibody working concentrations are 0.5 µg per ml.

Western Blotting

**Image 2.** Western blot analysis of anti-Phospho-STAT5a-Antibody (ABIN389667 and ABIN2839646) in CEM cell line lysate (35 µg/lane). Phospho-STAT5a(arrow) was detected using the purified Pab.

Immunohistochemistry (Paraffin-embedded Sections)

**Image 3.** Formalin-fixed and paraffin-embedded human cancer tissue reacted with the primary antibody, which was peroxidase-conjugated to the secondary antibody, followed by AEC staining. This data demonstrates the use of this antibody for immunohistochemistry, clinical relevance has not been evaluated. BC = breast carcinoma, HC = hepatocarcinoma.