

Datasheet for ABIN389681
anti-WEE1 antibody (pSer123)[Go to Product page](#)

2 Images

1 Publication

Overview

Quantity:	400 µL
Target:	WEE1
Binding Specificity:	pSer123
Reactivity:	Human
Host:	Rabbit
Clonality:	Polyclonal
Conjugate:	This WEE1 antibody is un-conjugated
Application:	Immunohistochemistry (Paraffin-embedded Sections) (IHC (p)), Dot Blot (DB)

Product Details

Immunogen:	This Wee1 Antibody is generated from rabbits immunized with a KLH conjugated synthetic phosphopeptide corresponding to amino acid residues surrounding S123 of human Wee1.
Clone:	RB07865
Isotype:	Ig Fraction
Purification:	This antibody is purified through a protein A column, followed by peptide affinity purification.

Target Details

Target:	WEE1
Alternative Name:	Wee1 (WEE1 Products)
Background:	This gene encodes a nuclear protein, which is a tyrosine kinase belonging to the Ser/Thr family

Target Details

of protein kinases. This protein catalyzes the inhibitory tyrosine phosphorylation of CDC2/cyclin B kinase, and appears to coordinate the transition between DNA replication and mitosis by protecting the nucleus from cytoplasmically activated CDC2 kinase.

Molecular Weight: 71597

Gene ID: 7465

NCBI Accession: [NP_001137448](#), [NP_003381](#)

UniProt: [P30291](#)

Pathways: [Cell Division Cycle](#), [Mitotic G1-G1/S Phases](#), [M Phase](#)

Application Details

Application Notes: IHC-P: 1:50~100. DB: 1:500

Restrictions: For Research Use only

Handling

Format: Liquid

Buffer: Purified polyclonal antibody supplied in PBS with 0.09 % (W/V) sodium azide.

Preservative: Sodium azide

Precaution of Use: This product contains Sodium azide: a POISONOUS AND HAZARDOUS SUBSTANCE which should be handled by trained staff only.

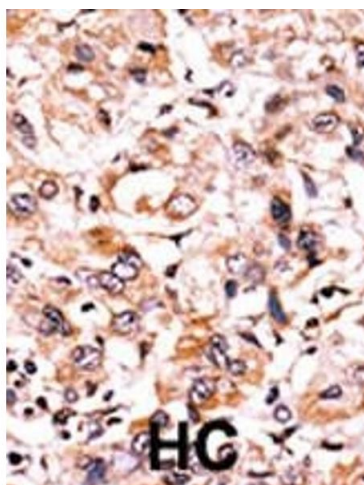
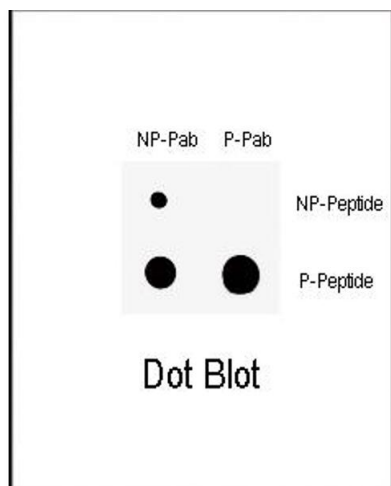
Storage: 4 °C, -20 °C

Storage Comment: Maintain refrigerated at 2-8 °C for up to 6 months. For long term storage store at -20 °C in small aliquots to prevent freeze-thaw cycles.

Expiry Date: 6 months

Publications

Product cited in: Lei, Chen, Huang, Wu, Lin, Lai: "Proteomic analysis of the effect of extracellular calcium ions on human mesenchymal stem cells: Implications for bone tissue engineering." in: **Chemico-biological interactions**, Vol. 233, pp. 139-46, (2015) ([PubMed](#)).



Dot Blot

Image 1. Dot blot analysis of anti-Phospho-Wee1- Antibody (ABIN389681 and ABIN2839651) on nitrocellulose membrane. 50 ng of Phospho-peptide or Non Phospho-peptide per dot were adsorbed. Antibodies working concentration was 0.5 µg per ml.

Immunohistochemistry (Paraffin-embedded Sections)

Image 2. Formalin-fixed and paraffin-embedded human cancer tissue reacted with the primary antibody, which was peroxidase-conjugated to the secondary antibody, followed by AEC staining. This data demonstrates the use of this antibody for immunohistochemistry, clinical relevance has not been evaluated. BC = breast carcinoma, HC = hepatocarcinoma