

Datasheet for ABIN389702  
**anti-Crk antibody (pSer41)**



[Go to Product page](#)

1 Image

## Overview

Quantity:	400 µL
Target:	Crk (CRK)
Binding Specificity:	pSer41
Reactivity:	Human
Host:	Rabbit
Clonality:	Polyclonal
Conjugate:	This Crk antibody is un-conjugated
Application:	Dot Blot (DB)

## Product Details

Immunogen:	This CRK Antibody is generated from rabbits immunized with a KLH conjugated synthetic phosphopeptide corresponding to amino acid residues surrounding S41 of human CRK.
Clone:	RB17175
Isotype:	Ig Fraction
Predicted Reactivity:	M, Rat
Purification:	This antibody is purified through a protein A column, followed by peptide affinity purification.

## Target Details

Target:	Crk (CRK)
Alternative Name:	CRK ( <a href="#">CRK Products</a> )

## Target Details

---

Background:	CRK is a member of an adapter protein family that binds to several tyrosine-phosphorylated proteins. It has several SH2 and SH3 domains (src-homology domains) and is involved in several signaling pathways, recruiting cytoplasmic proteins in the vicinity of tyrosine kinase through SH2-phosphotyrosine interaction. The N-terminal SH2 domain of this protein functions as a positive regulator of transformation whereas the C-terminal SH3 domain functions as a negative regulator of transformation.
Molecular Weight:	33831
Gene ID:	1398
NCBI Accession:	<a href="#">NP_005197</a> , <a href="#">NP_058431</a>
UniProt:	<a href="#">P46108</a>
Pathways:	<a href="#">Neurotrophin Signaling Pathway</a> , <a href="#">CXCR4-mediated Signaling Events</a> , <a href="#">Signaling of Hepatocyte Growth Factor Receptor</a>

## Application Details

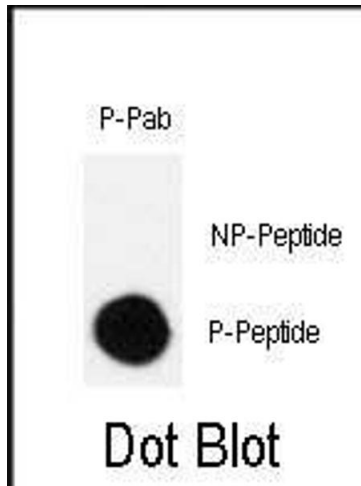
---

Application Notes:	DB: 1:500
Restrictions:	For Research Use only

## Handling

---

Format:	Liquid
Buffer:	Purified polyclonal antibody supplied in PBS with 0.09 % (W/V) sodium azide.
Preservative:	Sodium azide
Precaution of Use:	This product contains Sodium azide: a POISONOUS AND HAZARDOUS SUBSTANCE which should be handled by trained staff only.
Storage:	4 °C,-20 °C
Storage Comment:	Maintain refrigerated at 2-8 °C for up to 6 months. For long term storage store at -20 °C in small aliquots to prevent freeze-thaw cycles.
Expiry Date:	6 months



#### Dot Blot

**Image 1.** Dot blot analysis of Phospho-CRK-S41 polyclonal antibody (ABIN389702 and ABIN2837929) on nitrocellulose membrane. 50 ng of Phospho-peptide or Non Phospho-peptide per dot were adsorbed. Antibody working concentration was 0.5  $\mu$ g per ml. P-Pab: phospho-antibody, P-Peptide: phospho-peptide, NP-Peptide: non-phospho-peptide.