

Datasheet for ABIN389781
anti-RGS19 antibody (pSer24)[Go to Product page](#)

1 Image

Overview

| | |
|----------------------|--------------------------------------|
| Quantity: | 400 µL |
| Target: | RGS19 |
| Binding Specificity: | pSer24 |
| Reactivity: | Human |
| Host: | Rabbit |
| Clonality: | Polyclonal |
| Conjugate: | This RGS19 antibody is un-conjugated |
| Application: | Dot Blot (DB) |

Product Details

| | |
|---------------|---|
| Immunogen: | This RGS19 Antibody is generated from rabbits immunized with a KLH conjugated synthetic phosphopeptide corresponding to amino acid residues surrounding S24 of human RGS19. |
| Clone: | RB11890 |
| Isotype: | Ig Fraction |
| Purification: | This antibody is purified through a protein A column, followed by peptide affinity purification. |

Target Details

| | |
|-------------------|---|
| Target: | RGS19 |
| Alternative Name: | RGS19 (RGS19 Products) |
| Background: | Macroautophagy is the major inducible pathway for the general turnover of cytoplasmic |

Target Details

constituents in eukaryotic cells, it is also responsible for the degradation of active cytoplasmic enzymes and organelles during nutrient starvation. Macroautophagy involves the formation of double-membrane bound autophagosomes which enclose the cytoplasmic constituent targeted for degradation in a membrane bound structure, which then fuse with the lysosome (or vacuole) releasing a single-membrane bound autophagic bodies which are then degraded within the lysosome (or vacuole). RGS19 enhances the intrinsic GTPase-activating protein activity of the Galphai3 protein, which stimulates autophagy by favoring the GDP-bound form of Galphai3.

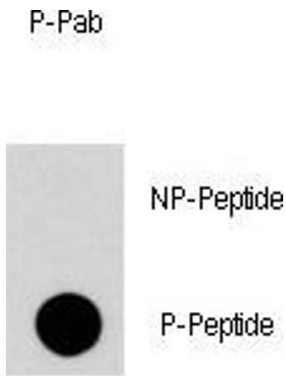
| | |
|-------------------|--|
| Molecular Weight: | 24636 |
| Gene ID: | 10287 |
| NCBI Accession: | NP_001034556 , NP_005864 |
| UniProt: | P49795 |
| Pathways: | Myometrial Relaxation and Contraction , Regulation of G-Protein Coupled Receptor Protein Signaling |

Application Details

| | |
|--------------------|-----------------------|
| Application Notes: | DB: 1:500 |
| Restrictions: | For Research Use only |

Handling

| | |
|--------------------|--|
| Format: | Liquid |
| Buffer: | Purified polyclonal antibody supplied in PBS with 0.09 % (W/V) sodium azide. |
| Preservative: | Sodium azide |
| Precaution of Use: | This product contains Sodium azide: a POISONOUS AND HAZARDOUS SUBSTANCE which should be handled by trained staff only. |
| Storage: | 4 °C,-20 °C |
| Storage Comment: | Maintain refrigerated at 2-8 °C for up to 6 months. For long term storage store at -20 °C in small aliquots to prevent freeze-thaw cycles. |
| Expiry Date: | 6 months |



Dot Blot

Dot Blot

Image 1. Dot blot analysis of Phospho-RGS19-S24 Antibody (ABIN389781 and ABIN2839690) on nitrocellulose membrane. 50 ng of Phospho-peptide or Non Phospho-peptide per dot were adsorbed. Antibody working concentrations are 0.5 µg per ml.