



[Go to Product page](#)

Datasheet for ABIN389806
anti-TAB1 antibody (pSer423)

1 Image

Overview

Quantity:	400 µL
Target:	TAB1
Binding Specificity:	pSer423
Reactivity:	Human
Host:	Rabbit
Clonality:	Polyclonal
Conjugate:	This TAB1 antibody is un-conjugated
Application:	Dot Blot (DB)

Product Details

Immunogen:	This MAP3K7IP1 Antibody is generated from rabbits immunized with a KLH conjugated synthetic phosphopeptide corresponding to amino acid residues surrounding S423 of human MAP3K7IP1.
Clone:	RB21994
Isotype:	Ig Fraction
Purification:	This antibody is purified through a protein A column, followed by peptide affinity purification.

Target Details

Target:	TAB1
Alternative Name:	MAP3K7IP1 (TAB1 Products)

Target Details

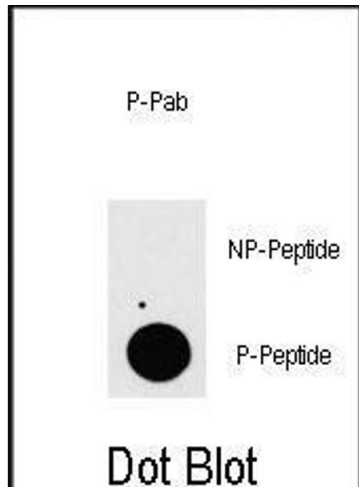
Background:	MAP3K7IP1 was identified as a regulator of the MAP kinase kinase kinase MAP3K7/TAK1, which is known to mediate various intracellular signaling pathways, such as those induced by TGF beta, interleukin 1, and WNT-1. This protein interacts and thus activates TAK1 kinase. It has been shown that the C-terminal portion of this protein is sufficient for binding and activation of TAK1, while a portion of the N-terminus acts as a dominant-negative inhibitor of TGF beta, suggesting that this protein may function as a mediator between TGF beta receptors and TAK1. This protein can also interact with and activate the mitogen-activated protein kinase 14 (MAPK14/p38alpha), and thus represents an alternative activation pathway, in addition to the MAPKK pathways, which contributes to the biological responses of MAPK14 to various stimuli.
Molecular Weight:	54644
Gene ID:	10454
NCBI Accession:	NP_006107 , NP_705717
UniProt:	Q15750
Pathways:	TLR Signaling , Fc-epsilon Receptor Signaling Pathway , Activation of Innate immune Response , Toll-Like Receptors Cascades

Application Details

Application Notes:	DB: 1:500
Restrictions:	For Research Use only

Handling

Format:	Liquid
Buffer:	Purified polyclonal antibody supplied in PBS with 0.09 % (W/V) sodium azide.
Preservative:	Sodium azide
Precaution of Use:	This product contains Sodium azide: a POISONOUS AND HAZARDOUS SUBSTANCE which should be handled by trained staff only.
Storage:	4 °C, -20 °C
Storage Comment:	Maintain refrigerated at 2-8 °C for up to 6 months. For long term storage store at -20 °C in small aliquots to prevent freeze-thaw cycles.
Expiry Date:	6 months



Dot Blot

Image 1. Dot blot analysis of anti-P3K7IP1-p Phospho-specific Pab (ABIN389806 and ABIN2839699) on nitrocellulose membrane. 50 ng of Phospho-peptide or Non Phospho-peptide per dot were adsorbed. Antibody working concentrations are 0.5 μ g per ml.