

Datasheet for ABIN389814
anti-NFAT1 antibody (pSer330)[Go to Product page](#)

1 Image

Overview

| | |
|----------------------|--------------------------------------|
| Quantity: | 400 µL |
| Target: | NFAT1 |
| Binding Specificity: | pSer330 |
| Reactivity: | Human |
| Host: | Rabbit |
| Clonality: | Polyclonal |
| Conjugate: | This NFAT1 antibody is un-conjugated |
| Application: | Dot Blot (DB) |

Product Details

| | |
|---------------|--|
| Immunogen: | This NFATC2 Antibody is generated from rabbits immunized with a KLH conjugated synthetic phosphopeptide corresponding to amino acid residues surrounding S330 of human NFATC2. |
| Clone: | RB12881 |
| Isotype: | Ig Fraction |
| Purification: | This antibody is purified through a protein A column, followed by peptide affinity purification. |

Target Details

| | |
|-------------------|---|
| Target: | NFAT1 |
| Alternative Name: | NFATC2 (NFAT1 Products) |
| Background: | NFATC2 is a member of the nuclear factor of activated T cells (NFAT) family. It is a DNA- |

Target Details

binding protein with a REL-homology region (RHR) and an NFAT-homology region (NHR). This protein is present in the cytosol and only translocates to the nucleus upon T cell receptor (TCR) stimulation, where it becomes a member of the nuclear factors of activated T cells transcription complex. This complex plays a central role in inducing gene transcription during the immune response.

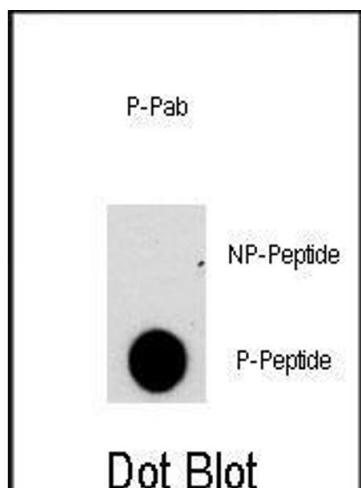
| | |
|-------------------|--|
| Molecular Weight: | 100146 |
| Gene ID: | 4773 |
| NCBI Accession: | NP_001129493 , NP_036472 , NP_775114 |
| UniProt: | Q13469 |
| Pathways: | RTK Signaling , WNT Signaling , Fc-epsilon Receptor Signaling Pathway , VEGF Signaling , BCR Signaling |

Application Details

| | |
|--------------------|-----------------------|
| Application Notes: | DB: 1:500 |
| Restrictions: | For Research Use only |

Handling

| | |
|--------------------|--|
| Format: | Liquid |
| Buffer: | Purified polyclonal antibody supplied in PBS with 0.09 % (W/V) sodium azide. |
| Preservative: | Sodium azide |
| Precaution of Use: | This product contains Sodium azide: a POISONOUS AND HAZARDOUS SUBSTANCE which should be handled by trained staff only. |
| Storage: | 4 °C,-20 °C |
| Storage Comment: | Maintain refrigerated at 2-8 °C for up to 6 months. For long term storage store at -20 °C in small aliquots to prevent freeze-thaw cycles. |
| Expiry Date: | 6 months |



Dot Blot

Image 1. Dot blot analysis of anti-NFATC2-p Phospho-specific Pab (ABIN389814 and ABIN2839702) on nitrocellulose membrane. 50 ng of Phospho-peptide or Non Phospho-peptide per dot were adsorbed. Antibody working concentrations are 0.5 µg per ml.