

Datasheet for ABIN389849

anti-PIK3 gamma antibody (pSer1100)[Go to Product page](#)**1** Image

Overview

| | |
|----------------------|---|
| Quantity: | 400 µL |
| Target: | PIK3 gamma (PIK3CG) |
| Binding Specificity: | pSer1100 |
| Reactivity: | Human |
| Host: | Rabbit |
| Clonality: | Polyclonal |
| Conjugate: | This PIK3 gamma antibody is un-conjugated |
| Application: | Dot Blot (DB) |

Product Details

| | |
|-----------------------|---|
| Immunogen: | This PIK3CG Antibody is generated from rabbits immunized with a KLH conjugated synthetic phosphopeptide corresponding to amino acid residues surrounding S1100 of human PIK3CG. |
| Clone: | RB13320 |
| Isotype: | Ig Fraction |
| Predicted Reactivity: | M, Pig |
| Purification: | This antibody is purified through a protein A column, followed by peptide affinity purification. |

Target Details

| | |
|-------------------|--|
| Target: | PIK3 gamma (PIK3CG) |
| Alternative Name: | PIK3CG (PIK3CG Products) |

Target Details

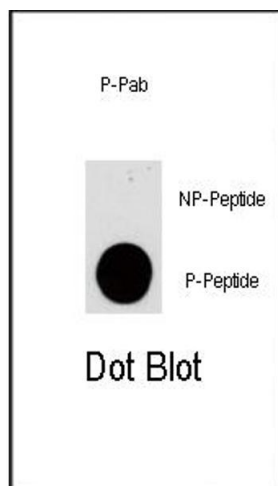
| | |
|-------------------|--|
| Background: | PIK3CG belongs to the pi3/pi4-kinase family of proteins. It is an enzyme that phosphorylates phosphoinositides on the 3-hydroxyl group of the inositol ring. It is an important modulator of extracellular signals, including those elicited by E-cadherin-mediated cell-cell adhesion, which plays an important role in maintenance of the structural and functional integrity of epithelia. In addition to its role in promoting assembly of adherens junctions, the protein is thought to play a pivotal role in the regulation of cytotoxicity in NK cells. The gene for this protein is located in a commonly deleted segment of chromosome 7 previously identified in myeloid leukemias. |
| Molecular Weight: | 126454 |
| Gene ID: | 5294 |
| NCBI Accession: | NP_001269355 , NP_001269356 , NP_002640 |
| UniProt: | P48736 |
| Pathways: | PI3K-Akt Signaling , RTK Signaling , AMPK Signaling , TLR Signaling , Inositol Metabolic Process , Hepatitis C , VEGF Signaling |

Application Details

| | |
|--------------------|-----------------------|
| Application Notes: | DB: 1:500 |
| Restrictions: | For Research Use only |

Handling

| | |
|--------------------|--|
| Format: | Liquid |
| Buffer: | Purified polyclonal antibody supplied in PBS with 0.09 % (W/V) sodium azide. |
| Preservative: | Sodium azide |
| Precaution of Use: | This product contains Sodium azide: a POISONOUS AND HAZARDOUS SUBSTANCE which should be handled by trained staff only. |
| Storage: | 4 °C, -20 °C |
| Storage Comment: | Maintain refrigerated at 2-8 °C for up to 6 months. For long term storage store at -20 °C in small aliquots to prevent freeze-thaw cycles. |
| Expiry Date: | 6 months |



Dot Blot

Image 1. Dot blot analysis of anti-PIK3CG-p Phospho-specific Pab (R) on nitrocellulose membrane. 50 ng of Phospho-peptide or Non Phospho-peptide per dot were adsorbed. Antibody working concentrations are 0.5 µg per ml.