



Datasheet for ABIN389863  
**anti-Tuberin antibody (pSer1798)**



[Go to Product page](#)

2 Images

Overview

Quantity:	400 µL
Target:	Tuberin (TSC2)
Binding Specificity:	pSer1798
Reactivity:	Human
Host:	Rabbit
Clonality:	Polyclonal
Conjugate:	This Tuberin antibody is un-conjugated
Application:	Dot Blot (DB), Immunofluorescence (IF)

Product Details

Immunogen:	This TSC2 Antibody is generated from rabbits immunized with a KLH conjugated synthetic phosphopeptide corresponding to amino acid residues surrounding S1798 of human TSC2.
Clone:	RB13393
Isotype:	Ig Fraction
Purification:	This antibody is purified through a protein A column, followed by peptide affinity purification.

Target Details

Target:	Tuberin (TSC2)
Alternative Name:	TSC2 ( <a href="#">TSC2 Products</a> )
Background:	Mutations in TSC2 lead to tuberous sclerosis complex. The protein is believed to be a tumor

## Target Details

---

suppressor and is able to specifically stimulate the intrinsic GTPase activity of the Ras-related protein RAP1A and RAB5. The protein associates with hamartin in a cytosolic complex, possibly acting as a chaperone for hamartin. TSC2 may have a function in vesicular transport, but may also play a role in the regulation of cell growth arrest and in the regulation of transcription mediated by steroid receptors. Interaction between TSC1 and TSC2 may facilitate vesicular docking.

Molecular Weight: 200608

Gene ID: 7249

NCBI Accession: [NP\\_000539](#), [NP\\_001070651](#), [NP\\_001107854](#)

UniProt: [P49815](#)

Pathways: [RTK Signaling](#), [AMPK Signaling](#), [Fc-epsilon Receptor Signaling Pathway](#), [EGFR Signaling Pathway](#), [Neurotrophin Signaling Pathway](#), [Regulation of Cell Size](#), [Tube Formation](#), [Protein targeting to Nucleus](#)

## Application Details

---

Application Notes: IF: 1:10~50. DB: 1:500

Restrictions: For Research Use only

## Handling

---

Format: Liquid

Buffer: Purified polyclonal antibody supplied in PBS with 0.09 % (W/V) sodium azide.

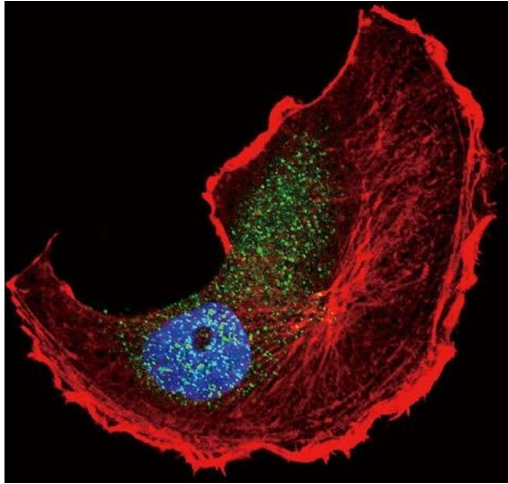
Preservative: Sodium azide

Precaution of Use: This product contains Sodium azide: a POISONOUS AND HAZARDOUS SUBSTANCE which should be handled by trained staff only.

Storage: 4 °C, -20 °C

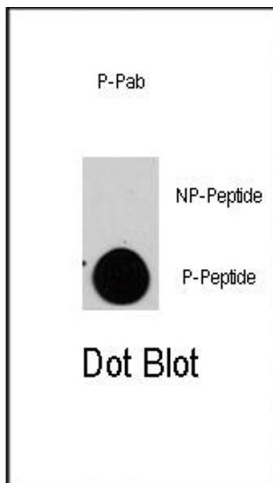
Storage Comment: Maintain refrigerated at 2-8 °C for up to 6 months. For long term storage store at -20 °C in small aliquots to prevent freeze-thaw cycles.

Expiry Date: 6 months



### Immunofluorescence

**Image 1.** Confocal immunofluorescent analysis of Phospho-TSC2- Antibody (ABIN389863 and ABIN2839723) with MCF-7 cell followed by Alexa Fluor 488-conjugated goat anti-rabbit IgG (green). Actin filaments have been labeled with Alexa Fluor 555 phalloidin (red). DAPI was used to stain the cell nuclear (blue).



### Dot Blot

**Image 2.** Dot blot analysis of anti-TSC2-p Phospho-specific Pab (R) on nitrocellulose membrane. 50 ng of Phospho-peptide or Non Phospho-peptide per dot were adsorbed. Antibody working concentrations are 0.5 µg per ml.