

Datasheet for ABIN389919
anti-GATA6 antibody (pTyr271)



[Go to Product page](#)

1 Image

Overview

Quantity:	400 µL
Target:	GATA6
Binding Specificity:	pTyr271
Reactivity:	Human
Host:	Rabbit
Clonality:	Polyclonal
Application:	Dot Blot (DB)

Product Details

Immunogen:	This GATA6 Antibody is generated from rabbits immunized with a KLH conjugated synthetic phosphopeptide corresponding to amino acid residues surrounding Y271 of human GATA6.
Clone:	RB15307
Isotype:	Ig Fraction
Purification:	This antibody is purified through a protein A column, followed by peptide affinity purification.

Target Details

Target:	GATA6
Alternative Name:	GATA6 (GATA6 Products)
Background:	GATA6 may be important for regulating terminal differentiation and/or proliferation.
Molecular Weight:	60033

Target Details

Gene ID: 2627

NCBI Accession: [NP_005248](#)

UniProt: [Q92908](#)

Application Details

Application Notes: DB: 1:500

Restrictions: For Research Use only

Handling

Format: Liquid

Buffer: Purified polyclonal antibody supplied in PBS with 0.09 % (W/V) sodium azide.

Preservative: Sodium azide

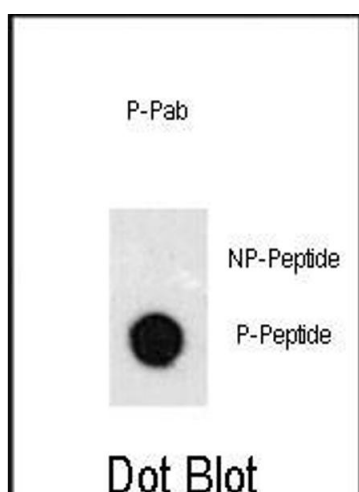
Precaution of Use: This product contains Sodium azide: a POISONOUS AND HAZARDOUS SUBSTANCE which should be handled by trained staff only.

Storage: 4 °C,-20 °C

Storage Comment: Maintain refrigerated at 2-8 °C for up to 6 months. For long term storage store at -20 °C in small aliquots to prevent freeze-thaw cycles.

Expiry Date: 6 months

Images



Dot Blot

Image 1. Dot blot analysis of anti-Phospho-GATA6-p Phospho-specific Pab (R) on nitrocellulose membrane. 50 ng of Phospho-peptide or Non Phospho-peptide per dot were adsorbed. Antibody working concentrations are 0.5 µg per ml.